

Canon

LASER CLASS 3170 SERIES

NETWORKABLE MULTIFUNCTION SYSTEMS



17-ppm Print Speed

Network Faxing & Scanning

Super G3 FACSIMILE

1200-dpi Resolution

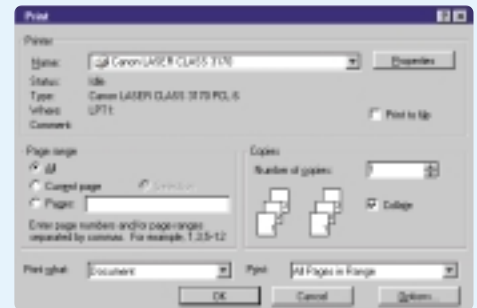


High-performance Multifunction Systems that print across the network at 17 ppm while faxing, scanning, copying...

Making technology more usable makes business more productive. And Canon is uniquely prepared to present you with easy-to-use Multifunction Solutions to help your business run more smoothly and more productively. Canon is the pioneer in Multifunction Office Systems, and offers the widest range of Multifunction Solutions. Plus, Canon has been Number One in Laser Facsimile for 10 years in a row and a world-leader in the manufacture of laser printers.



LASER CLASS® 3175MS



With MultiSpot, workgroups can easily print to the LASER CLASS 3170 Series.

With a LASER CLASS 3170 Series Multifunction System, everyone in your workgroup has the power of a high-volume Canon Laser Facsimile machine: **Super G3 Technology, improved image quality, a 70-sheet document feeder, a 17-ppm laser printer, 1200-dpi resolution, large document memory, and a 30-scan-per-minute scanner.** What's more, any LASER CLASS 3170 Series Multifunction System can be upgraded with MultiSpot™ to manage your document needs across the network.

The LASER CLASS 3175MS, the top of the LASER CLASS 3170 Series, comes with a PCL®6 Printer Board with a Parallel Port and supports a PostScript® 3* Option for both PC and Macintosh® users. Right out of the box, it's a high-volume, stand-alone Fax and a 17-ppm local laser printer to which you can add Network Printing or the Dual Line Option.** As your needs grow, you can choose from the following configurations for the LASER CLASS 3170 Series:

- Stand-alone Fax with Local Printer
 - PCL6 Printer Board
- Stand-alone Fax with Network Printer
 - PCL6 Printer Board, 10/100Base-T Network Printer I/F Board
- Network Fax/Scanner/Printer
 - MultiSpot™
- High-volume Dual Line Option

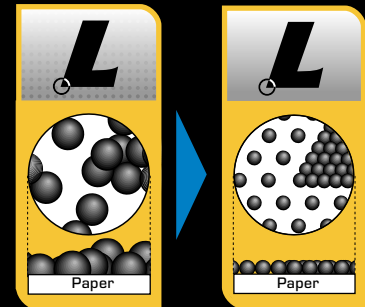
LASER CLASS technology

MultiSpot™ puts multifunctionality on your network

The MultiSpot™ solution adds true Network Printing, Network Faxing and Network Scanning to your LASER CLASS facsimile machine.



As with Canon's exclusive top-loading FX-6 Cartridge, which comes standard with all LASER CLASS 3170 Series models, the design of Canon's LASER CLASS Multifunction Systems combines minimal user-maintenance with superior reliability. Canon's Super Fine Toner, RAPID Fusing System™ and 17-ppm Canon engine also deliver the high performance and reliability that have made Canon the Laser Facsimile leader for so many years. And the LASER CLASS 3170 Series' 1200-dpi printing is enhanced by Automatic Image Refinement Technology, resulting in superior image quality.



Canon's Super Fine Toner particles provide excellent grayscale images and eliminate rough-looking edges.

	LASER CLASS 3170	LASER CLASS 3175	LASER CLASS 3175MS
Standard/Maximum Paper	500, 100/1,100	1,100	1,100
Standard/Maximum Memory	Up to 192 Pages**/ Up to 704 Pages**	Up to 448 Pages**/ Up to 704 Pages**	Up to 448 Pages**/ Up to 704 Pages**
Super G3 Dual Line†	Option	Option	Option
Parallel and Network Printing	Optional Parallel and Optional Network Printing	Optional Parallel and Optional Network Printing	Standard Parallel and Optional Network Printing
Network Faxing and Network Scanning*	Option	Option	Option

† User may select either the Dual Line Option or MultiSpot, but not both.

* Optional when 10Base-T MultiSpot Network Printer Board is installed; not available for 100Base-T Option.

** Based on ITU-T No.1 Chart (Standard Mode).

Super G3 fax speed

Super G3 Technology significantly reduces phone line charges. A typical high-volume user can save over \$10,000 during a five-year period‡ if upgrading from an older, conventional fax machine. This is because Super G3 Technology transmits at approximately 3 seconds per page▯, half the time of ordinary G3 machines. Plus, Super G3's JBIG compression is far more efficient than MMR technology, especially when transmitting halftones.



The FX-6 Cartridge loads easily.





Easy productivity

Canon multifunction systems save time. With InstaScan, documents are scanned at approximately 30 scans per minute so users spend minimal time at the facsimile machine. And, even as the first pages are being scanned, Quick On-Line Transmission begins fax transmission without delay.

The user-friendly, easy-to-read Control Panel makes all functions easily accessible.



The two adjustable, 500-sheet, Front-loading Cassettes on the LASER CLASS 3175MS/3175 provide a generous paper capacity.

Paper, memory and productivity

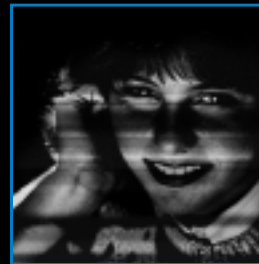
Canon's 17-ppm print speed and Print-in-Order output allow you to read lengthy faxes sooner—without having to rearrange the pages. Face-down, Print-in-Order output increases productivity.

Both the LASER CLASS 3175MS and LASER CLASS 3175 come standard with 7MB of memory (up to approximately 448 pages^{^^}). Paper capacity is a huge 1,100 sheets, stored in two 500-sheet, Front-loading Cassettes that are user-adjustable for letter or legal paper. A MultiPurpose Tray holds 100 letter, legal or A4 sheets.

With 3MB of memory standard, the LASER CLASS 3170 stores up to approximately 192 pages^{^^} of data. Its 600-sheet capacity is held in a 500-sheet, Front-loading Cassette, user-adjustable for letter or legal paper, and a 100-sheet MultiPurpose Tray, user-adjustable for letter, legal or A4 sizes. Each Multifunction System is upgradable to 11MB memory (up to approximately 704 pages^{^^}), comes standard with an FX-6 Cartridge, and has a 12-hour Battery Backup so you can confidently send and store lengthy documents.

UHQ™ VI image quality

Automatically send superior images with Canon's exclusive UHQ VI digital image processing, which distinguishes graphics from text on outgoing documents. With 64-shade Grayscale and Edge Enhancement, photos and graphics transmit with depth and clarity.



← Fax image transmitted conventionally.



Fax image transmitted with Canon's exclusive UHQ VI. →

Service and support

Canon maximizes your fax uptime through one of the largest sales, service and support networks in the United States. The Canon network provides prompt service and manufacturer-trained technicians who have access to a Technical Assistance Center (TAC), so you can always be confident you made the right decision.



Choose your productivity options,
from Dual Line Faxing to Network Printing



LASER CLASS® 3175

LASER CLASS® 3170

The LASER CLASS 3175 and LASER CLASS 3170 are hard-working, stand-alone facsimile systems that let you choose how you want to increase productivity. The LASER CLASS 3175 is an especially powerful Facsimile for your business' high-speed, high-quality, high-volume fax needs. It prints incoming faxes at 17 ppm with 600-dpi resolution, comes with a 70-sheet Automatic Document Feeder and FX-6 Cartridge, and has a convenient front-access design.

If you need the productivity of two fax machines in one, simply add the Super G3 Dual Line Option† to the LASER CLASS 3175 and LASER CLASS 3170. The Dual Line Option gives you twice the faxing power: send two faxes at once, receive two faxes at once, or send and receive faxes simultaneously. Walk-up users can even select which line they want to send from.

On top of that, you have the alternative of adding 17-ppm, 1200-dpi resolution, local or Network Printing, and the additional option of Network PC Faxing and Network Scanning.



SPECIFICATIONS

Type: Desktop Transceiver
Applicable Line: Public Switched Telephone Network
Compatibility: G3
Automatic Document Feeder: Up to 70 Letter-sized Sheets
Up to 30 Legal-sized Sheets
Up to 20 Ledger-sized Sheets
Scanning Method: Contact Image Sensor, Face-up Scanning
Document Sizes: Maximum: 11" x 39.4" (279mm x 1000mm)
Minimum: 5.8" x 4.1" (148mm x 105mm)
Effective Scanning Width: 10" (254mm)
InstaScan: Approx. 1.3 sec./page (LTR, Standard Mode)
Approx. 30 scan/min. (LTR, Standard Mode)
Data Compression System: MH, MR, MMR, JBIG
Modem Speed: 33.6/31.2/28.8/26.4/24.0/21.6/19.2
16.8/14.4/12.0/9.6/7.2/4.8/2.4 Kbps
Automatic Fallback
Transmission Speed: Approx. 3 sec./page* (V.34 33.6 Kbps + MMR)
Printing Method: Laser Dry Electrostatic Transfer
Printing Speed: Approx. 17 pages/min. (Letter)
Halftone: 64 shades of gray
Transmission/Receiving Resolution

	Horizontal	Vertical
Ultra Fine Mode:	406 pels/in. x (16 pels/mm)	392 lines/in. x 15.4 lines/mm)
Super Fine Mode:	203 pels/in. x (8 pels/mm)	392 lines/in. x 15.4 lines/mm)
Fine Mode:	203 pels/in. x (8 pels/mm)	196 lines/in. x 7.7 lines/mm)
Standard Mode:	203 pels/in. x (8 pels/mm)	98 lines/in. x 3.85 lines/mm)

Effective Recording Width: 8.5" (216mm)
Recording Paper Supply: LASER CLASS 3170: 600 Sheets
(1 x 500-sheet Letter/Legal Cassette;
100-sheet Letter/Legal MultiPurpose Tray)
LASER CLASS 3175/3175MS: 1,100 Sheets
(2 x 500-sheet Letter/Legal Cassette and one
100-sheet Letter/Legal MultiPurpose Tray)
Receiving Paper Tray: Face-down, Print-in-Order: 300 Sheets
(100 Upper, 200 Lower)
Recording Paper Size: Letter/Legal/A4
Enhanced Imaging Quality: UHQ VI (Ultra High Quality)
Enhanced Printing Quality: 600-dpi Smoothing for incoming faxes
Printing Resolution: 1200 dpi
Printer Cartridge: FX-6 Cartridge Included
Cartridge Yield: Approx. 5,000 pages*
Monthly Print Volume: 65,000 Prints
Power Consumption Standby: Approx. 20W Max. (LASER CLASS 3170/3175)
Approx. 26W Max. (LASER CLASS 3175MS)
Energy Saver: Approx. 15W Max. (LASER CLASS 3170/3175)
N/A (LASER CLASS 3175MS)
Dimensions: (H x W x D)
LASER CLASS 3170: 18.4" x 19.7" x 20.0"
(467mm x 501mm x 508mm)
LASER CLASS 3175/3175MS: 23.1" x 19.7" x 20.0"
(588mm x 501mm x 508mm)
Weight: (Excluding Handset Option)
LASER CLASS 3170: 57.3 lb. (26kg)
LASER CLASS 3175: 72.8 lb. (33kg)
LASER CLASS 3175MS: 74.1 lb. (33.6kg)
Environmental Conditions: Temperature: 50°F - 90.5°F (10°C - 32.5°C)
Humidity: 20% to 80% RH

Features:

Dialing
Automatic Dialing
One-touch Speed-dialing: 72 locations
Coded Speed-dialing: 128 locations
Group Dialing: Up to 199 groups
Each group can accommodate up to 199 locations (pre-programmed Speed-dials)
Maximum Dial Digits: 120
On-hook Dialing
Manual Dialing with 10-button Keypad
Automatic Redialing
Redial times: 15 times
Redial interval: 2-99 min.
Manual Redialing
Tone Dialing Key
Pause Key

Networking
Delayed Transmission:
Up to 210 destinations with up to 70 reservations
Memory Polling Transmission
Polling Reception
Multi-Polling: Up to 210 locations
Delayed Polling: Up to 200 locations
Up to 5 designated times per Speed-dial
Daily Delayed Multi-Polling
Continuous Polling

Memory
LASER CLASS 3170: (3MB) Total up to 192 pages^{▲▲} (2 open slots)
LASER CLASS 3175/3175MS: (7MB) Total up to 448 pages^{▲▲} (1 open slot)
LASER CLASS 3170 (2 open slots)
+2MB: Total up to 320 pages^{▲▲}
+2MB+2MB or 4MB: Total up to 448 pages^{▲▲}
+2MB+4MB: Total up to 576 pages^{▲▲}
+4MB+4MB: Total up to 704 pages^{▲▲}
LASER CLASS 3175/3175MS (1 open slot)
+2MB: Total up to 576 pages^{▲▲}
+4MB: Total up to 704 pages^{▲▲}

Sequential Broadcast: Up to 210 locations
(200 pre-programmed Speed-dials)
Relay Broadcast: Up to 200 locations
Delayed Relay Broadcast:
Up to 5 designated times per Speed-dial
Relay Broadcast Command
Delayed Relay Broadcast Command
Batch Transmission:
Up to 200 destinations
Up to 5 designated times per Speed-dial
Transmission to Confidential Mailbox
Confidential Mailbox: Up to 50 boxes
Canon Express Protocol:
CEP 1
Closed Network (Canon Mode: Activated by service personnel)
Receiving Restriction
Password and Subaddress (ITU-T Standard)
Confidential Mailbox
Relay Broadcast
Polling

Convenience
Auto Receive Reduction (70% - 100%)
Speaker Monitor
Automatic Receiving
Remote Reception by Phone

Dual Access:
Tx Reservation during Rx
Tx Reservation during Memory Tx
Memory Rx during Copy
Memory Tx during Copy
Transmission Reservation: Up to 70 reservations
Quick On-Line Tx
LCD: 20 digits x 2 lines (Liquid Crystal Display)
Department Access Code: Up to 19 codes
Restrictive Access Code: Up to 19 codes
Local Copy Function: Multiple copies up to 99 pages
Program Button
Memory Lock Reception
Battery Backup: 12 hours
Rx Document Multiple printout: Up to 99 pages
Rx Page Footer
Transfer

Report/Reference
Activity Report (Up to 40 transactions)
Non-delivery Report
Management Report:
List of phone numbers for One-touch and Coded Speed-dialing
List of transaction schedule
User Data List
File Reference
TTI (Transmitter Terminal Identification)
TTI Selector: Up to 19 Identifications
RTI (Remote Terminal Identification)

Options
33.6 Kbps Dual Line
PCL[®]6 Printer Board (LASER CLASS 3170/3175 only)
PostScript[®] 3 PS Module I
Network Printer I/F Board II
MultiSpot Network I/F Board III
MultiSpot Document Distribution System
Memory: 2MB, 4MB
Printer Memory: 4MB, 8MB, 16MB
500-sheet, Letter-sized Cassette (LASER CLASS 3170 only)
Duplex Unit
Envelope Feeder
Stamp
Telephone Handset

* PostScript 3 Module is optional.
** Dual Line Option may coexist with Parallel Port and 10/100Base-T Network Printing.
† User may select either the Dual Line Option or MultiSpot, but not both.
▲▲ Based on ITU-T No. 1 Chart (Standard Mode).
‡ Source: Based on a study of V.34 phone bill savings prepared by Davidson Consulting, 1997.
■ Approximate 3-second-per-page fax transmission time based on ITU-T No. 1 Chart (MMR, Standard Mode) at 33.6 Kbps modem speed when transmitting to another V.34 machine. The Public Switched Telephone Network (PSTN) currently supports 28.8 Kbps modem speeds or lower, depending on telephone line conditions.
◆ Based on 4% original, 5% coverage.

All LASER CLASS 3170 Series models are shown with optional handset. Canon and LASER CLASS are registered trademarks and NetSpot, MultiSpot, UHQ and RAPID Fusing System are trademarks of Canon Inc. IMAGEANYWARE is a service mark of Canon U.S.A., Inc. As an ENERGY STAR[®] Partner, Canon U.S.A., Inc. has determined that these products meet the ENERGY STAR[®] guidelines for energy efficiency. The ENERGY STAR name is a registered trademark of the U.S. Environmental Protection Agency. PostScript is a registered trademark of Adobe Systems Incorporated. PCL and LaserJet are registered trademarks of Hewlett-Packard Corporation. Macintosh is a registered trademark of Apple Computer, Inc. All other terms and product names may be trademarks or registered trademarks of their respective owners, and are hereby acknowledged. Specifications subject to change without notice.



COPYTEX 1-800-832-7000
www.copytex.com

Canon U.S.A., Inc.
One Canon Plaza
Lake Success, NY 11042

3-01012

1199-23953-150M



PRINTED ON RECYCLED PAPER IN THE U.S.A.

