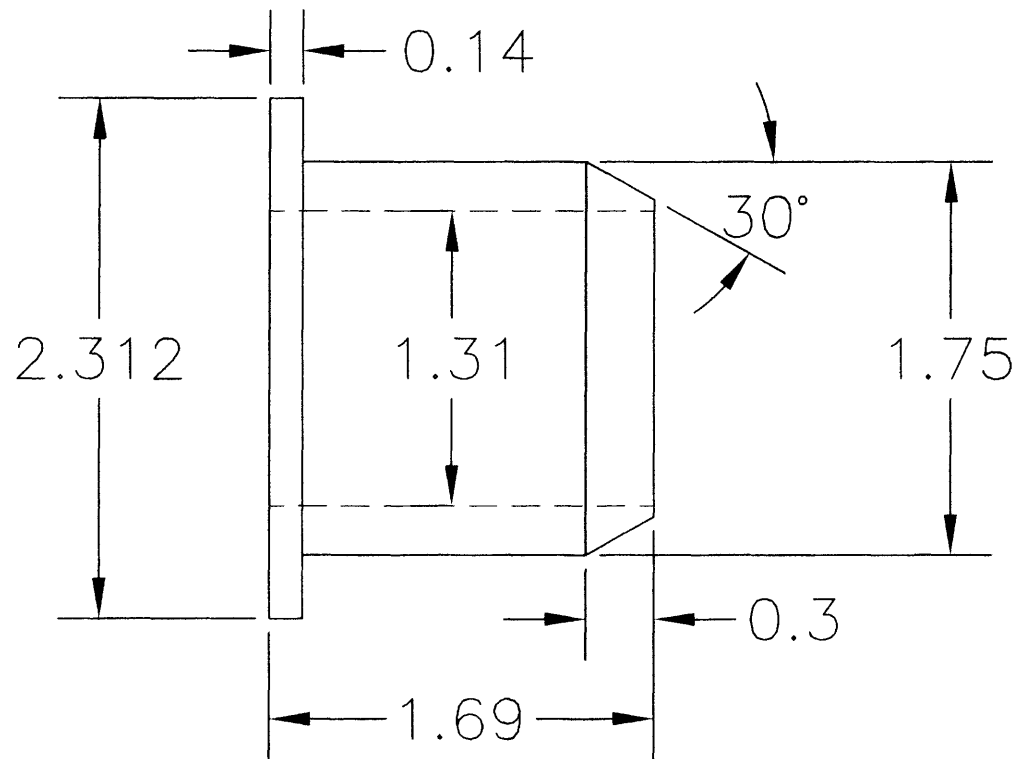


HANDWHEEL

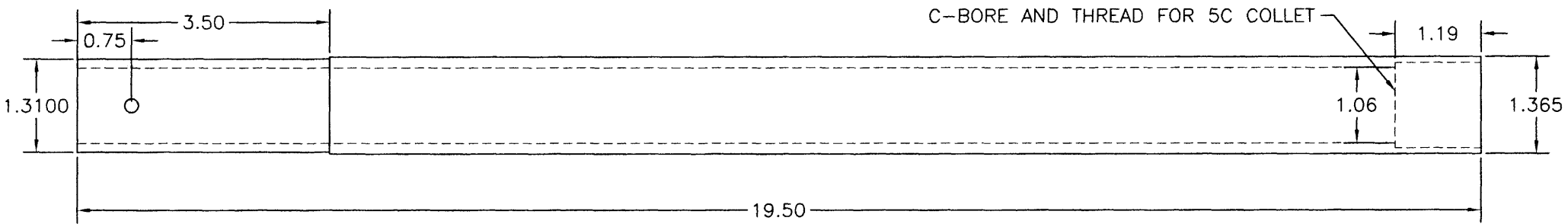
MAKE FROM SUITABLE ALUMINUM ALLOY

BORE 1.31 DIMENSION FOR A SNUG FIT ON DRAW TUBE



CENTERING CONE

STEEL, UNKNOWN ALLOY. HONE BORE FOR A VERY CLOSE RUNNING FIT ON L/H END OF DRAW TUBE



STEEL TUBE ϕ 1.365 O.D. x ϕ 1.06 I.D. x 19.5 INCHES LONG
 THE L/H END IS REDUCED TO ϕ 1.310 FOR 3.5 INCHES AND HAS TWO $\frac{3}{16}$ DRILL STARTS
 (ABOUT .12 DEEP) 90° APART .75 FROM THE END TO MATCH THE HANDWHEEL SET SCREWS
 C-BORE AND THREAD THE R/H END TO MATCH 5C COLLETS