

PARTS INDEX

For Lathes From Serial No. 600342 To _____

Cabinet	18.1
Bed	19.1
Headstock Casting and Gear Train Guard	20
Headstock	21.1
Quick-Change Gear Box	22
Gear Train	23
Electrical Assembly	24
Countershaft	25.1
Countershaft with Clutch and Brake	26.1
Motor Base Assembly	27
Variable Speed Control	28
Variable Speed Motor Pulley	29.2
Cross Slide	30.2
Carriage	31
Apron	32 & 33
Tailstock	34.2

INSTRUCTIONS FOR ORDERING REPAIR PARTS

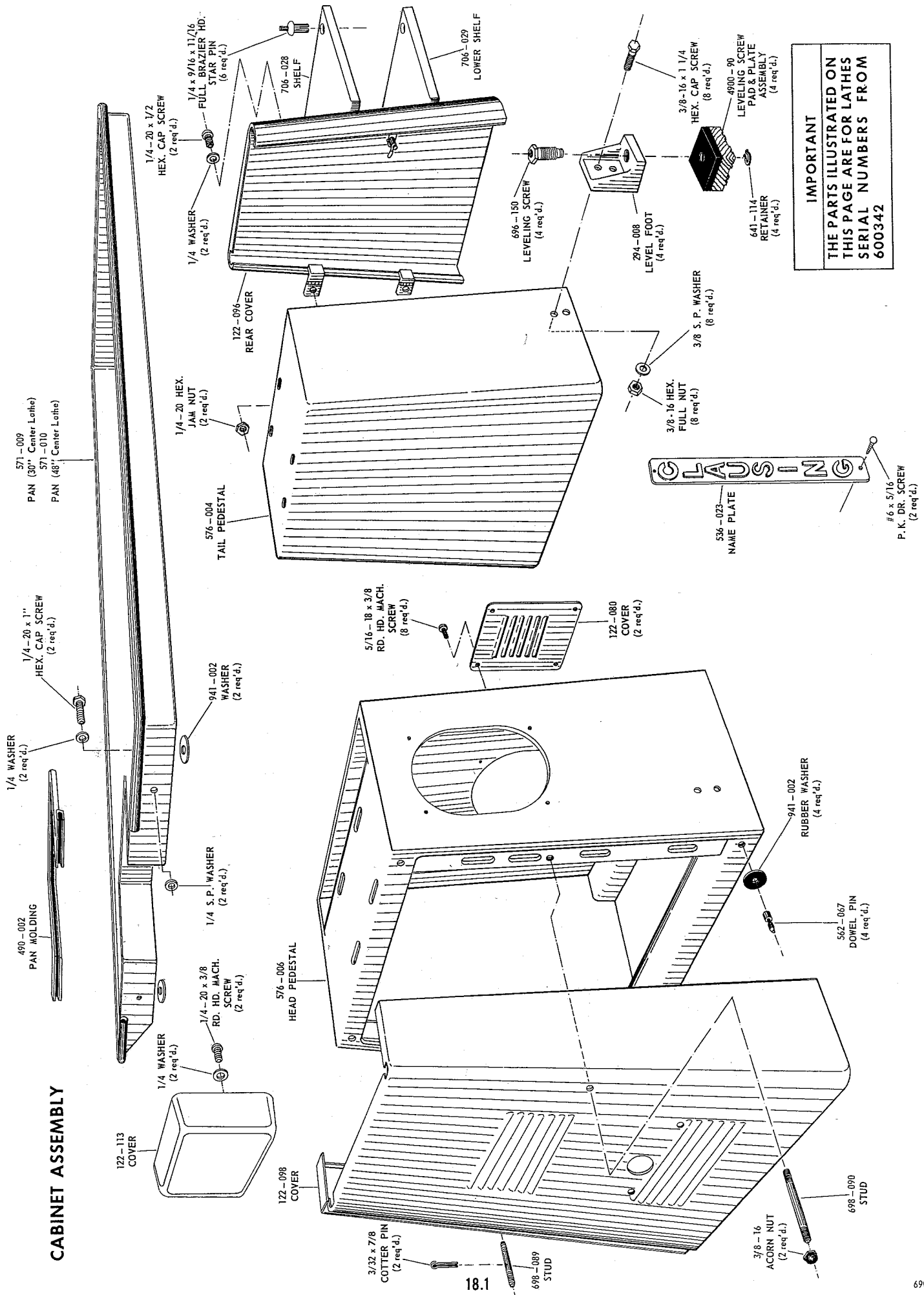
It is important to furnish the following information in addition to QUANTITY required:

1. PART NUMBER
2. PART NAME
3. MODEL and SERIAL NUMBER of machine tool -- you'll find both on the metal plate attached to machine -- note illustration below.



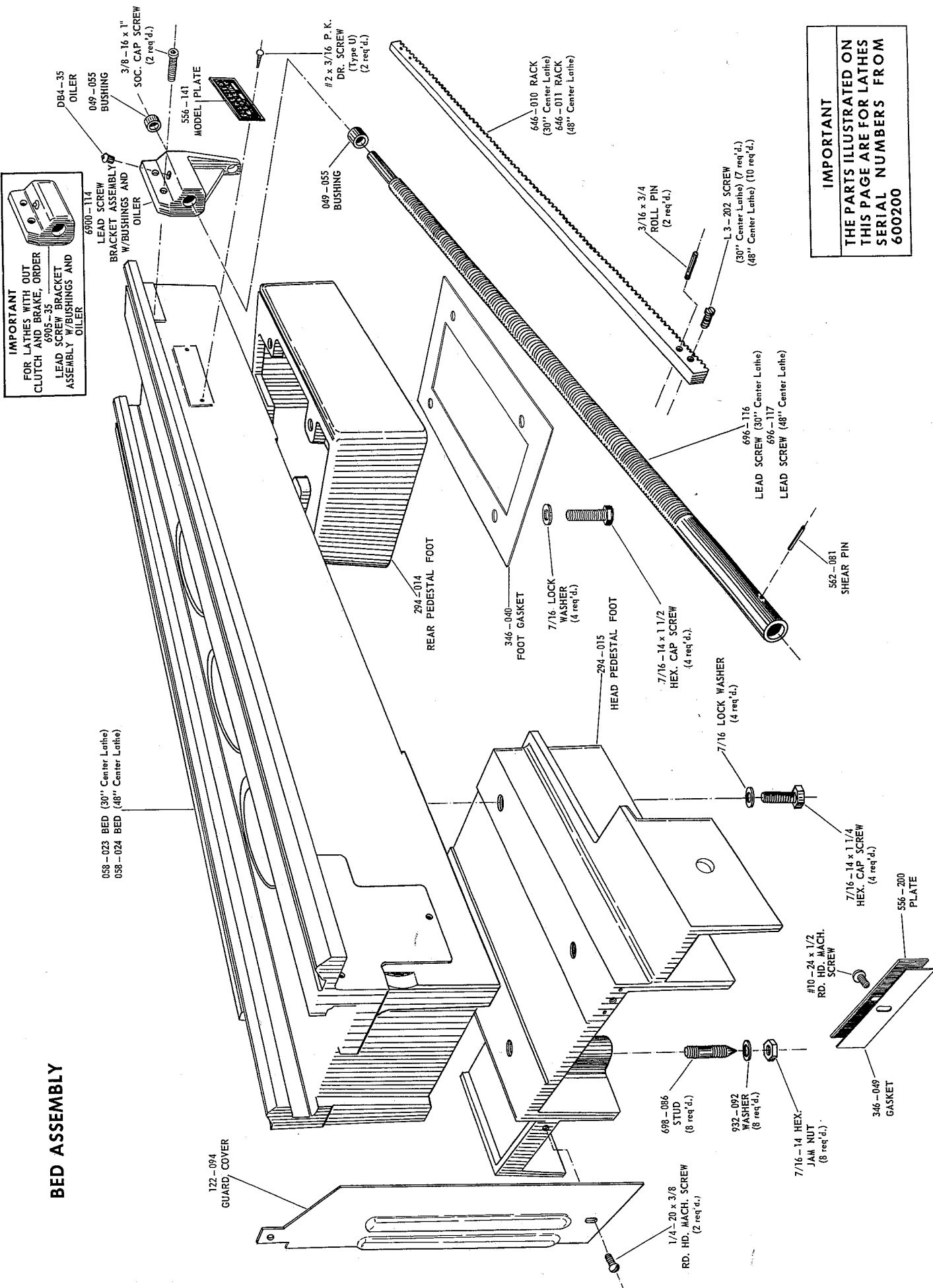
NOTE: Screws and nuts shown without part numbers should be purchased locally.
We reserve the right to make changes in design and specifications without notice.

CABINET ASSEMBLY



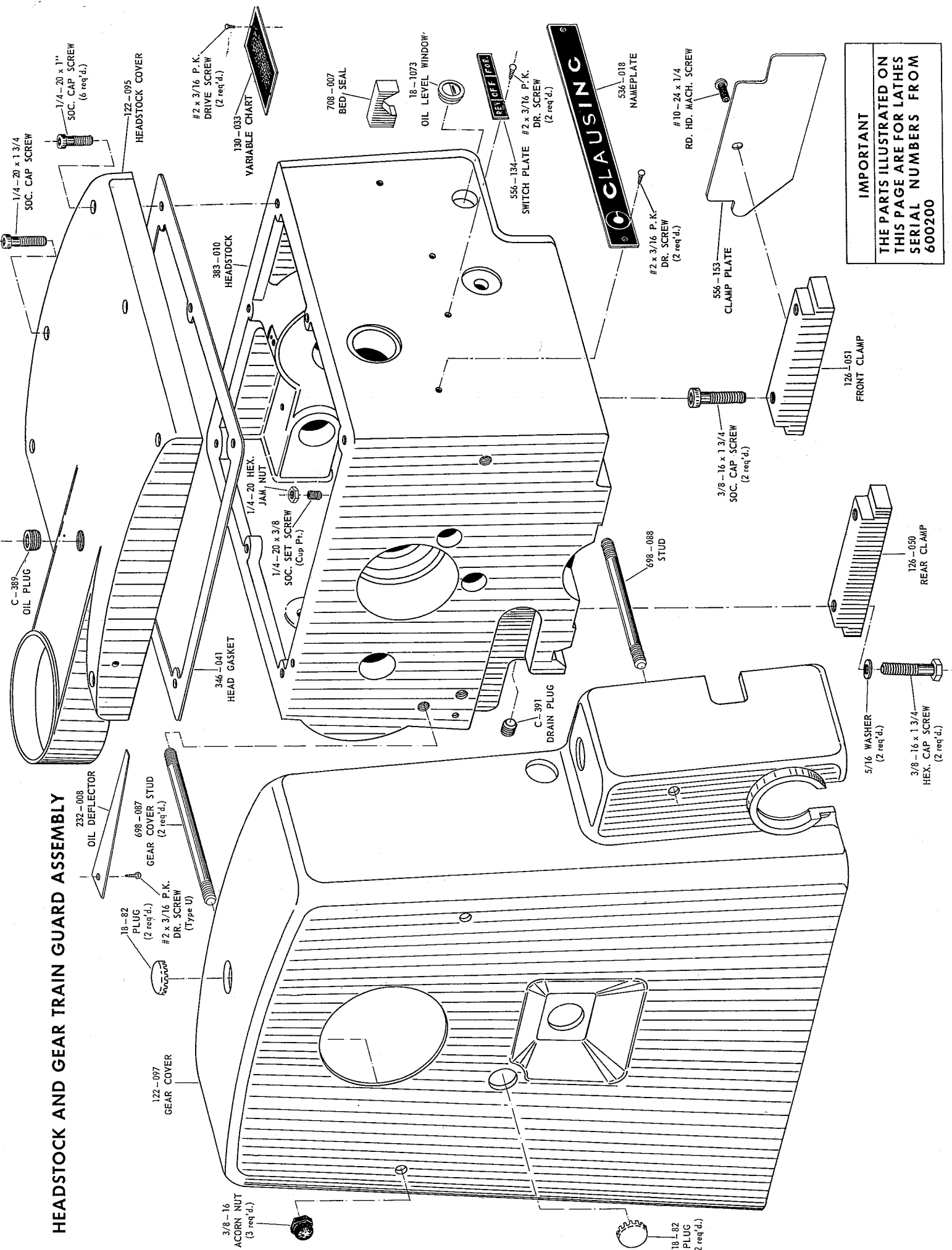
IMPORTANT
 THE PARTS ILLUSTRATED ON
 THIS PAGE ARE FOR LATHES
 SERIAL NUMBERS FROM
 600342

BED ASSEMBLY



IMPORTANT
 THE PARTS ILLUSTRATED ON
 THIS PAGE ARE FOR LATHES
 SERIAL NUMBERS FROM
 600200

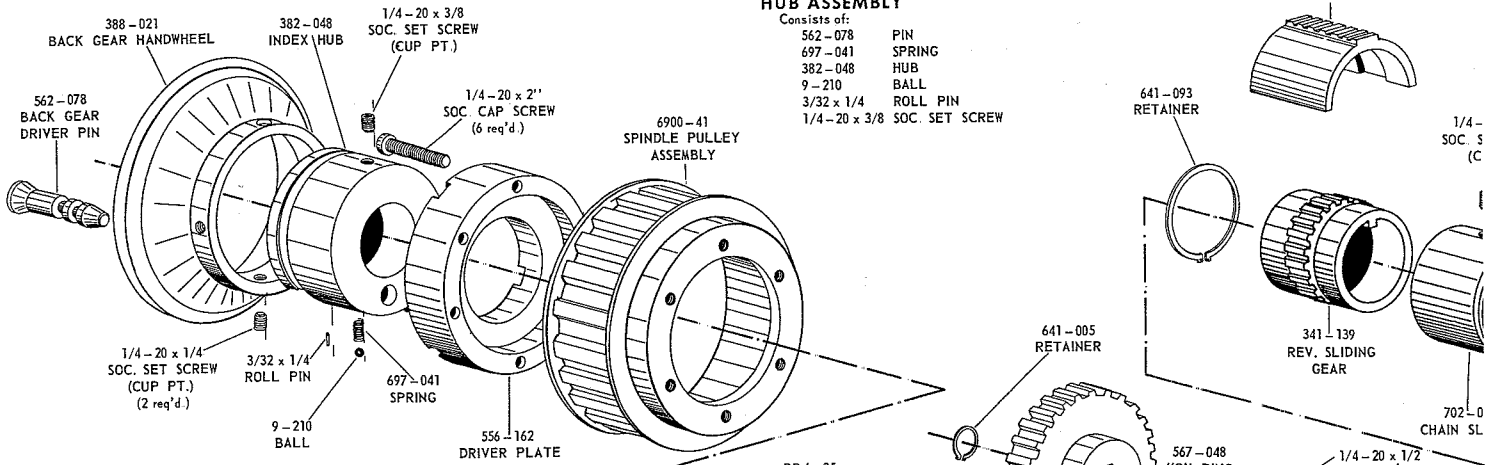
HEADSTOCK AND GEAR TRAIN GUARD ASSEMBLY



IMPORTANT
 THE PARTS ILLUSTRATED ON
 THIS PAGE ARE FOR LATHES
 SERIAL NUMBERS FROM
 600200

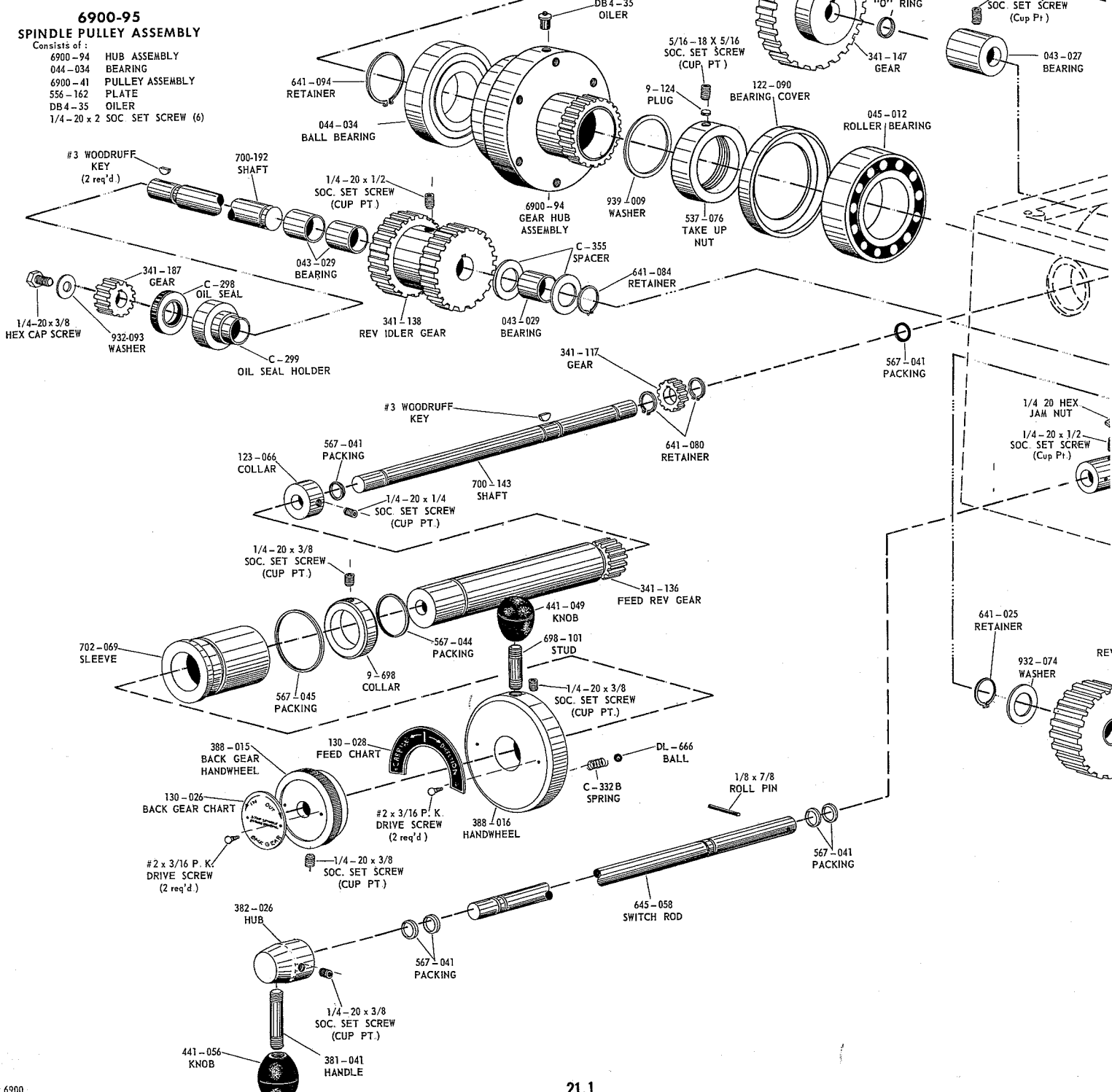
**6900-70
BACK GEAR ENGAGE
HUB ASSEMBLY**

- Consists of:
 562-078 PIN
 697-041 SPRING
 382-048 HUB
 9-210 BALL
 3/32 x 1/4 ROLL PIN
 1/4-20 x 3/8 SOC. SET SCREW

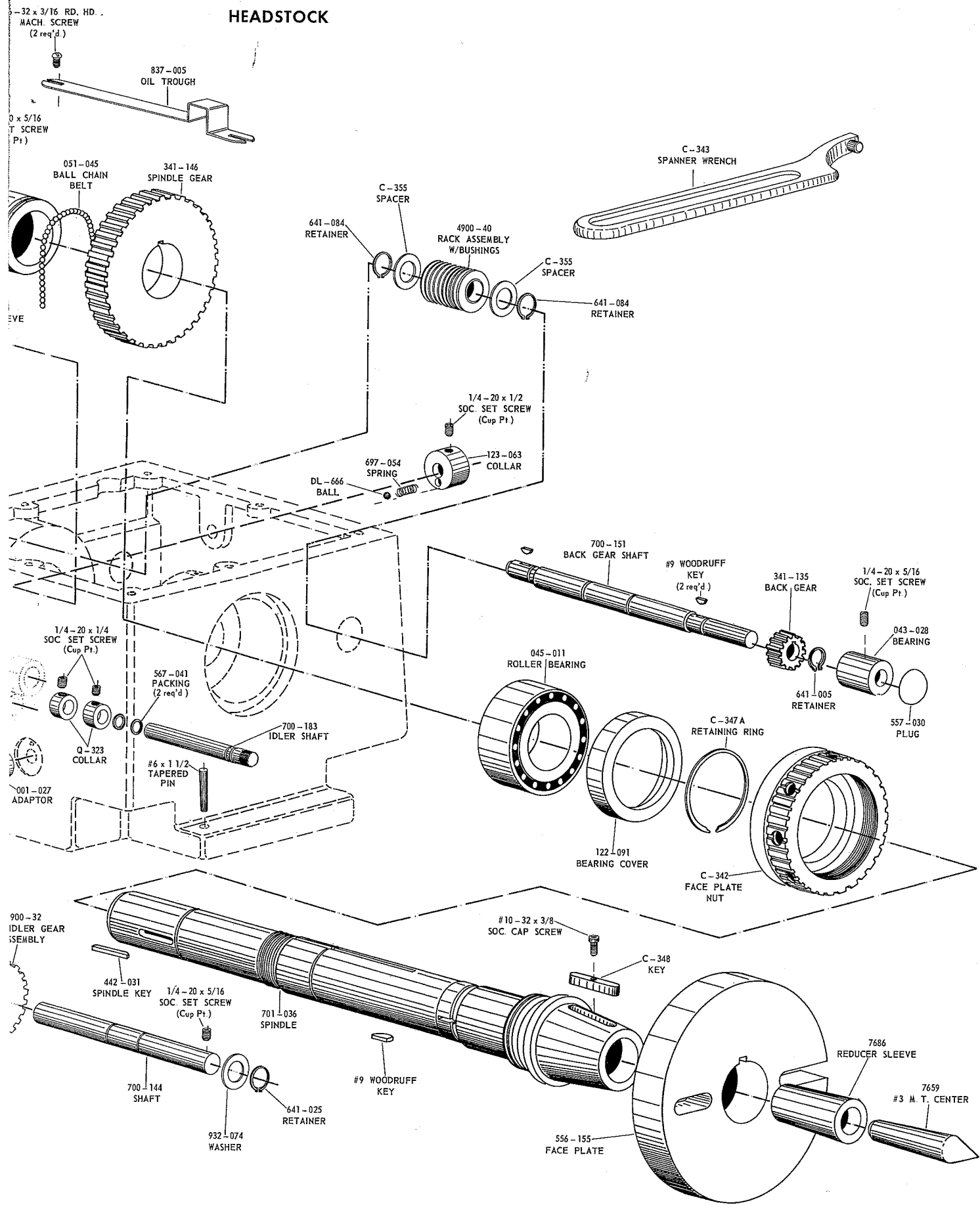


**6900-95
SPINDLE PULLEY ASSEMBLY**

- Consists of:
 6900-94 HUB ASSEMBLY
 044-034 BEARING
 6900-41 PULLEY ASSEMBLY
 556-162 PLATE
 DB4-35 OILER
 1/4-20 x 2 SOC. SET SCREW (6)



HEADSTOCK

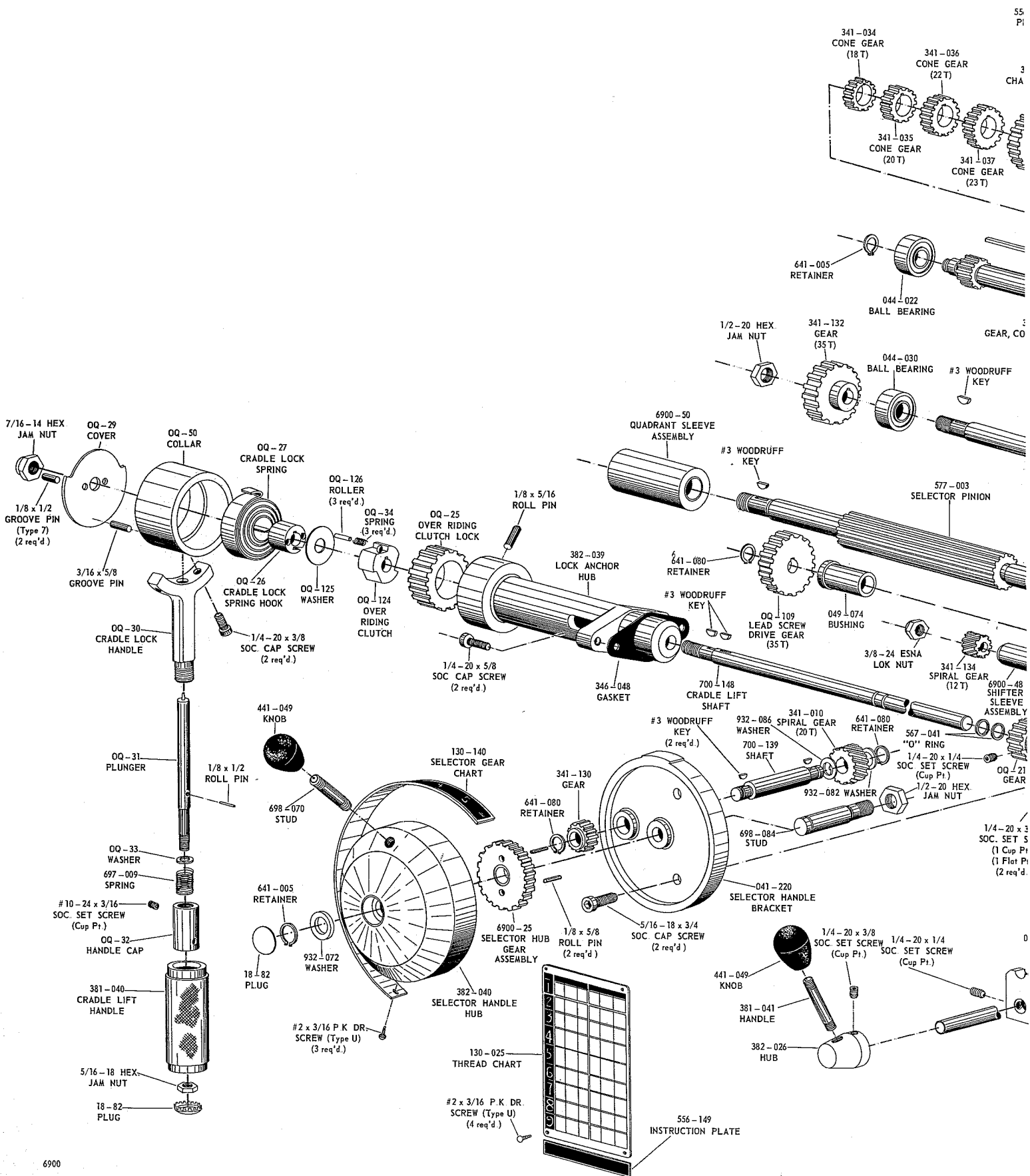


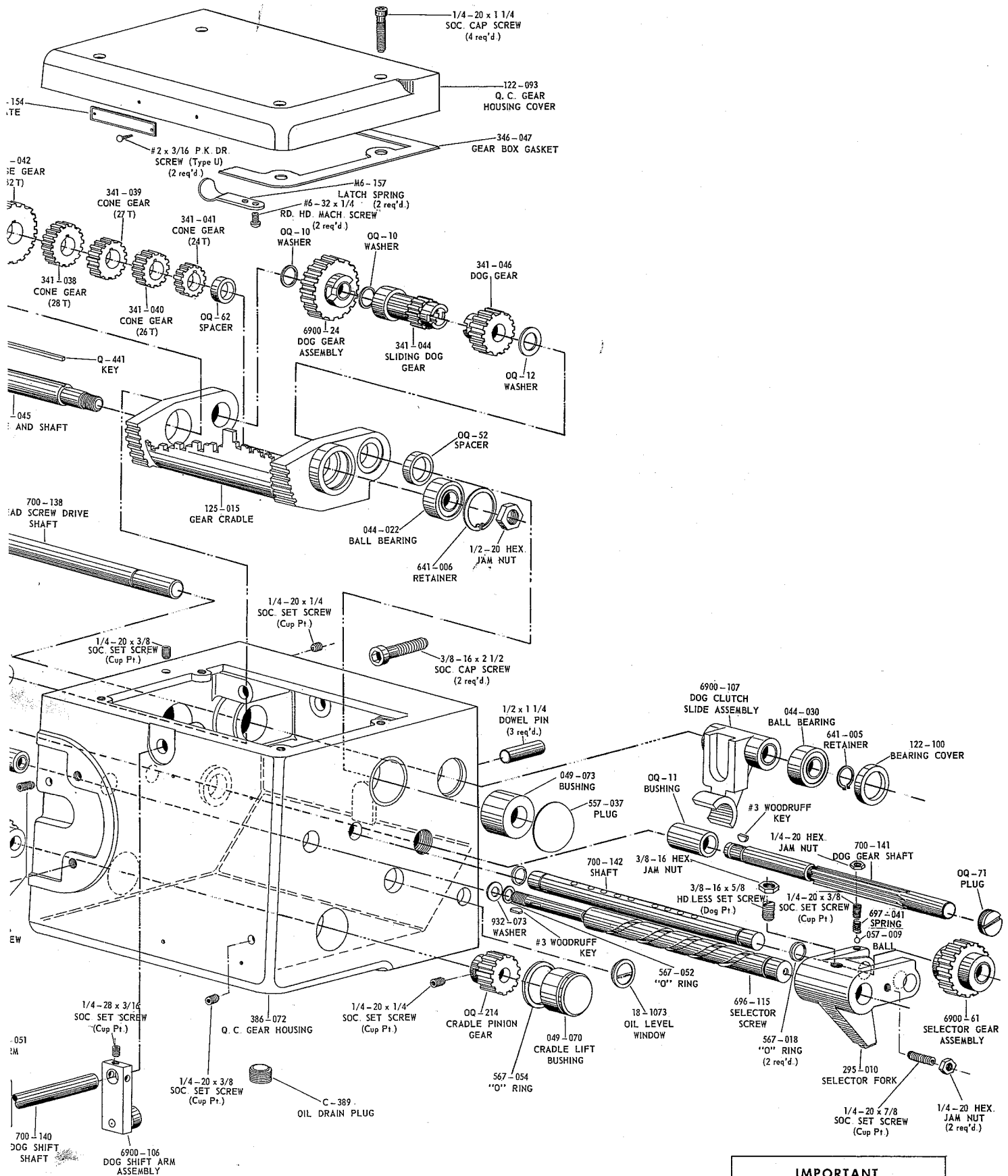
IMPORTANT

THE PARTS ILLUSTRATED ON THIS PAGE ARE FOR LATHES SERIAL NUMBERS FROM 600281

QUICK CHANGE GEAR BOX ASSEMBLY

6900-500

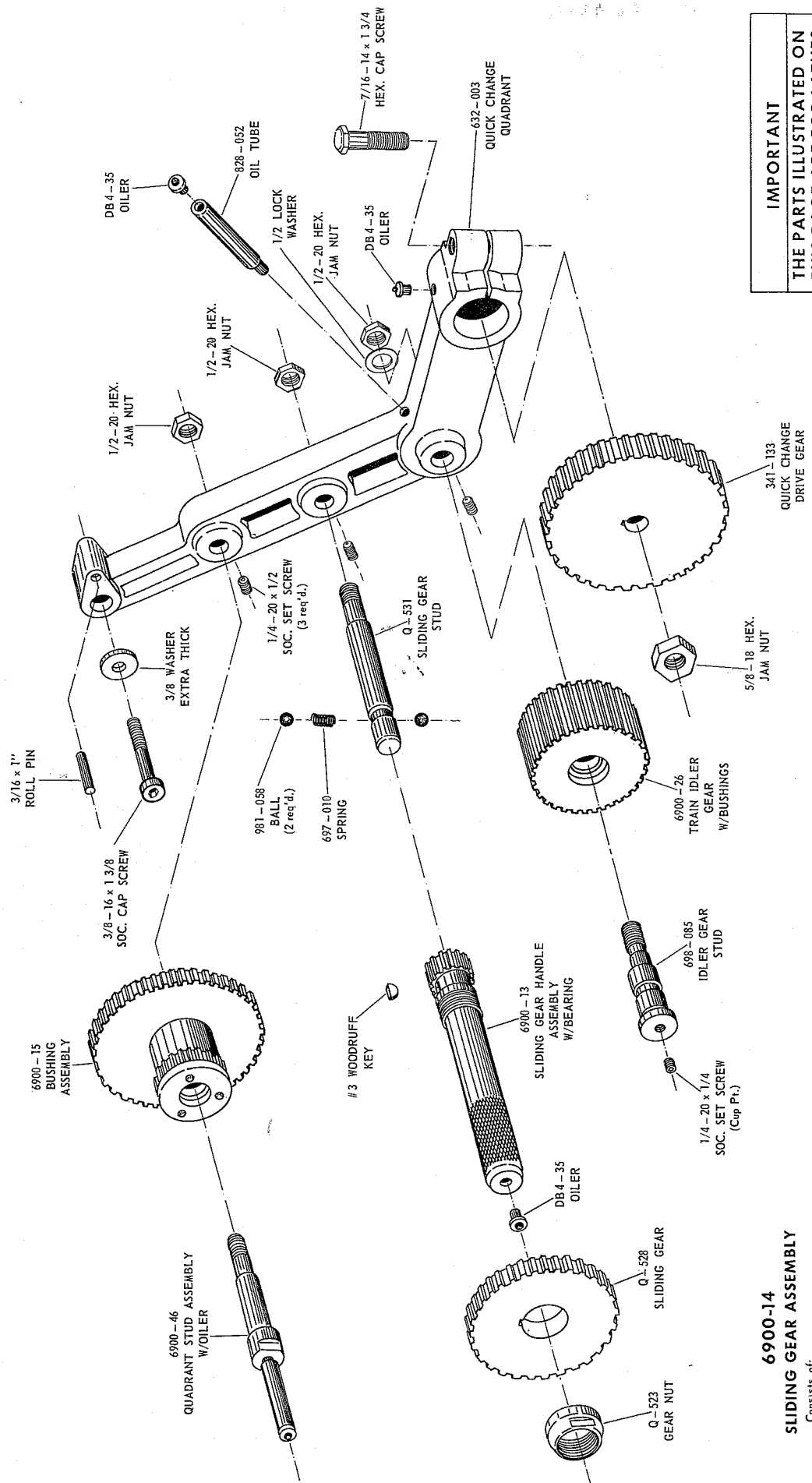




IMPORTANT

THE PARTS ILLUSTRATED ON THIS PAGE ARE FOR LATHES SERIAL NUMBERS FROM 600200

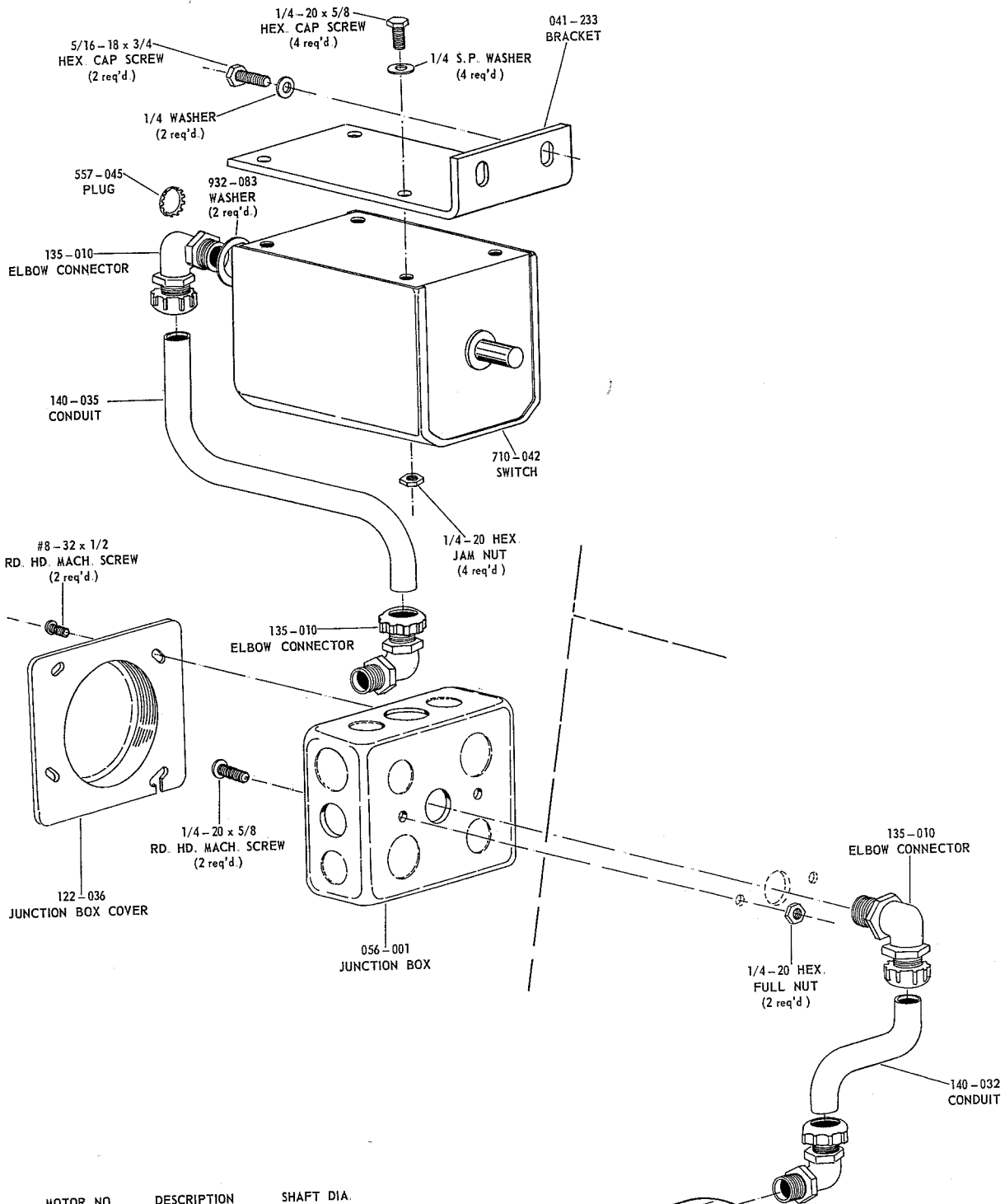
QUADRANT ASSEMBLY 6900-501



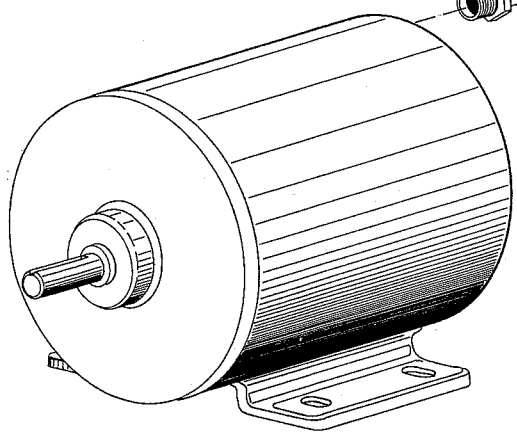
IMPORTANT
THE PARTS ILLUSTRATED ON
THIS PAGE ARE FOR LATHES
SERIAL NUMBERS FROM
600200

6900-14
SLIDING GEAR ASSEMBLY
Consists of:
6900-13 GEAR ASSEMBLY
Q-523 NUT
Q-528 GEAR
DB4-35 OILER
#3 WOODRUFF KEY

ELECTRICAL ASSEMBLY



MOTOR NO.	DESCRIPTION	SHAFT DIA.
2826	3. H.P. 3 PHASE	1 1/8



IMPORTANT
 THE PARTS ILLUSTRATED ON THIS PAGE ARE FOR LATHES SERIAL NUMBERS FROM 600200

COUNTERSHAFT 6900-502

6905-42 C'SHAFT SPINDLE ASSEMBLY

Consists of:

- 044-017 BEARING (2)
- 238-003 DRIVER
- 382-056 HUB
- 442-046 KEY
- 442-052 HUB KEY
- 442-053 DRIVER KEY
- 641-011 RETAINER (4)
- 641-086 RETAINER
- 699-138 SPACER
- 701-049 SPINDLE
- 6900-33 PULLEY ASSEM.
- 6900-40 C'SHAFT VARI. PULLEY ASSEM.
- 699-146 SPACER

6905-45 C'SHAFT ASSEMBLY W/O CLUTCH

Consists of:

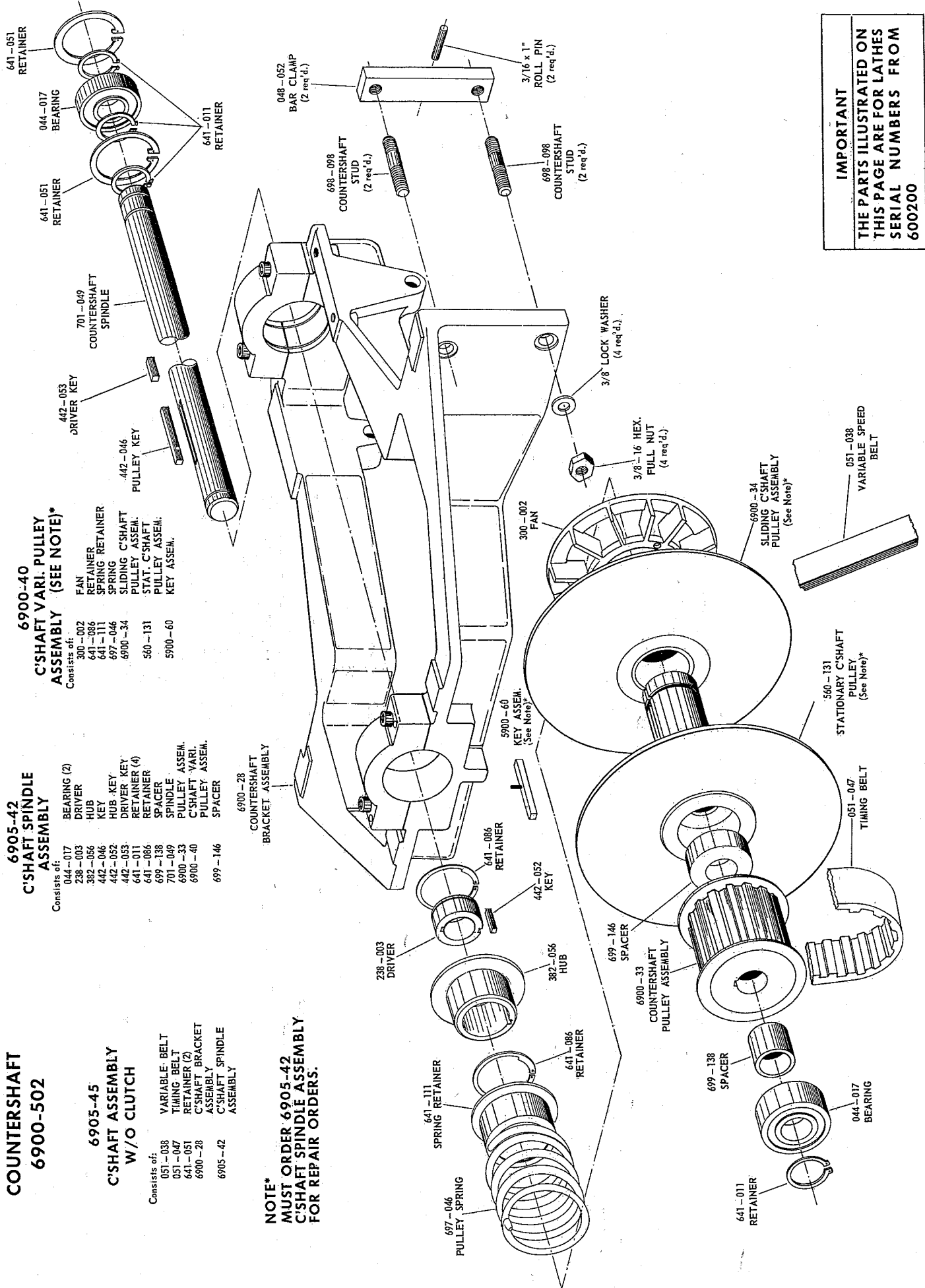
- 051-038 VARIABLE BELT
- 051-047 TIMING BELT
- 641-051 RETAINER (2)
- 6900-28 C'SHAFT BRACKET ASSEMBLY
- 6905-42 C'SHAFT SPINDLE ASSEMBLY

6900-40 C'SHAFT VARI. PULLEY ASSEMBLY (SEE NOTE)*

Consists of:

- 300-002 FAN
- 641-086 RETAINER
- 641-111 SPRING
- 697-046 SLIDING C'SHAFT PULLEY ASSEM.
- 6900-34 STAT. C'SHAFT PULLEY ASSEM.
- 560-131 KEY ASSEM.
- 5900-60

NOTE*
**MUST ORDER 6905-42
C'SHAFT SPINDLE ASSEMBLY
FOR REPAIR ORDERS.**



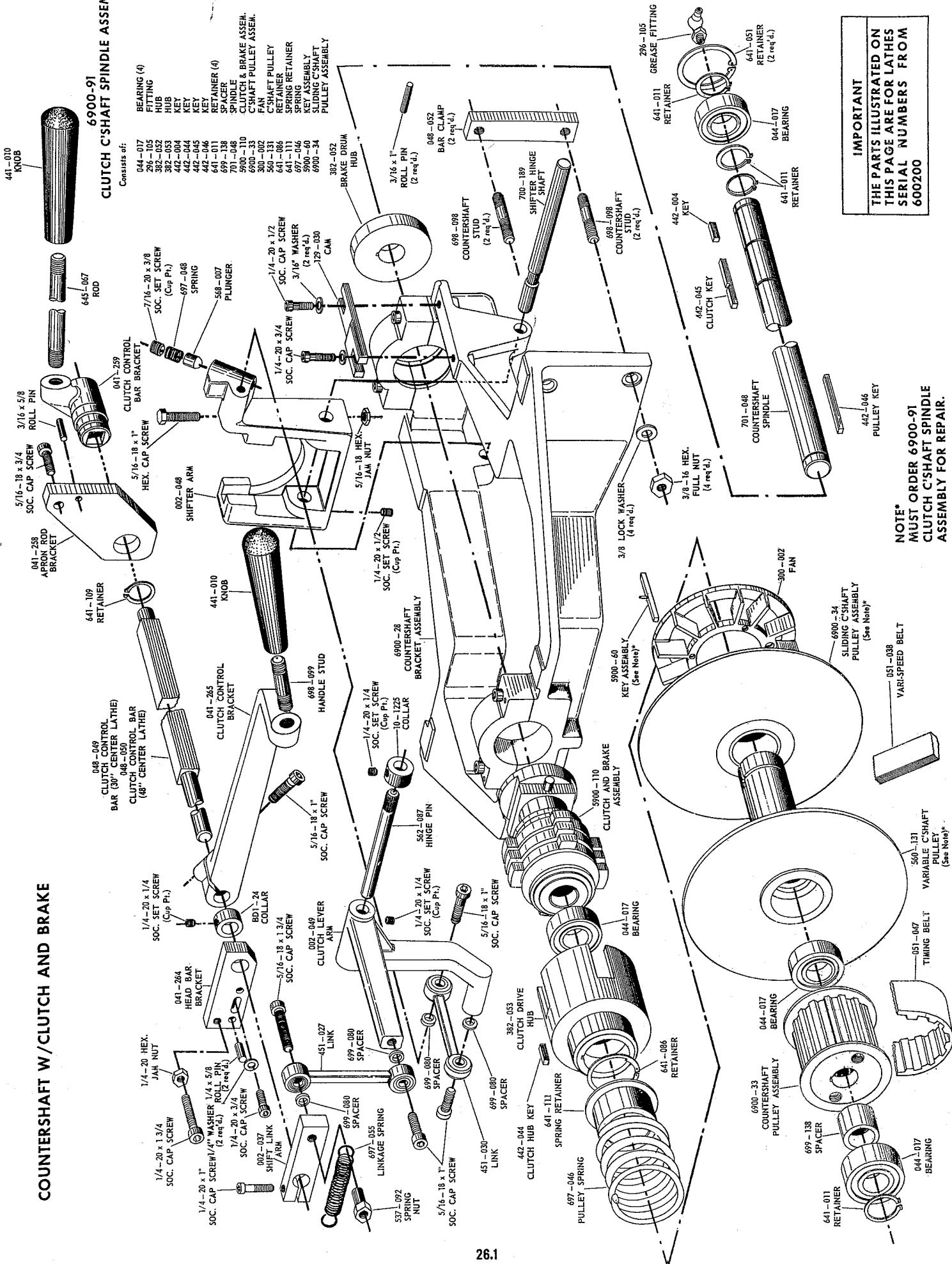
IMPORTANT
**THE PARTS ILLUSTRATED ON
THIS PAGE ARE FOR LATHES
SERIAL NUMBERS FROM
600200**

COUNTERSHAFT W/CLUTCH AND BRAKE

6900-91 CLUTCH C'SHAFT SPINDLE ASSEM.

Consists of:

- 044-017 BEARING (4)
- 323-025 FITTING
- 323-052 HUB
- 382-053 HUB
- 442-004 KEY
- 442-044 KEY
- 442-045 KEY
- 442-046 KEY
- 641-011 RETAINER (4)
- 641-011 SPACER
- 701-048 SPINDLE
- 5900-110 CLUTCH & BRAKE ASSEM.
- 6900-33 C'SHAFT PULLEY ASSEM.
- 300-002 FAN
- 641-011 RETAINER
- 641-011 RETAINER
- 697-016 SPRING
- 5900-60 KEY ASSEMBLY
- 6900-34 SLIDING C'SHAFT PULLEY ASSEMBLY

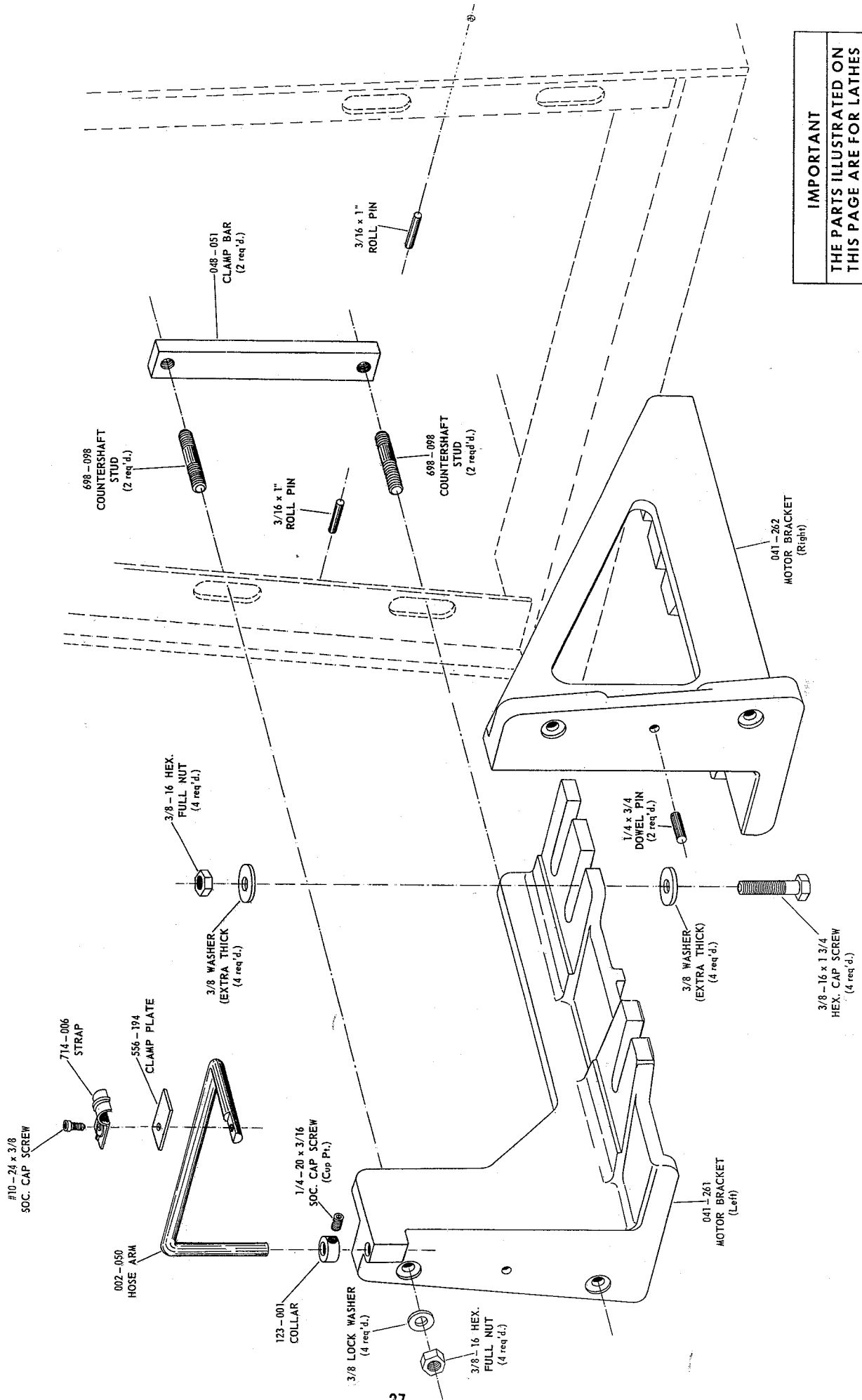


IMPORTANT
THE PARTS ILLUSTRATED ON THIS PAGE ARE FOR LATHES SERIAL NUMBERS FROM 600200

NOTE*
MUST ORDER 6900-91 CLUTCH C'SHAFT SPINDLE ASSEMBLY FOR REPAIR.

MOTOR BASE ASSEMBLY

6900-503

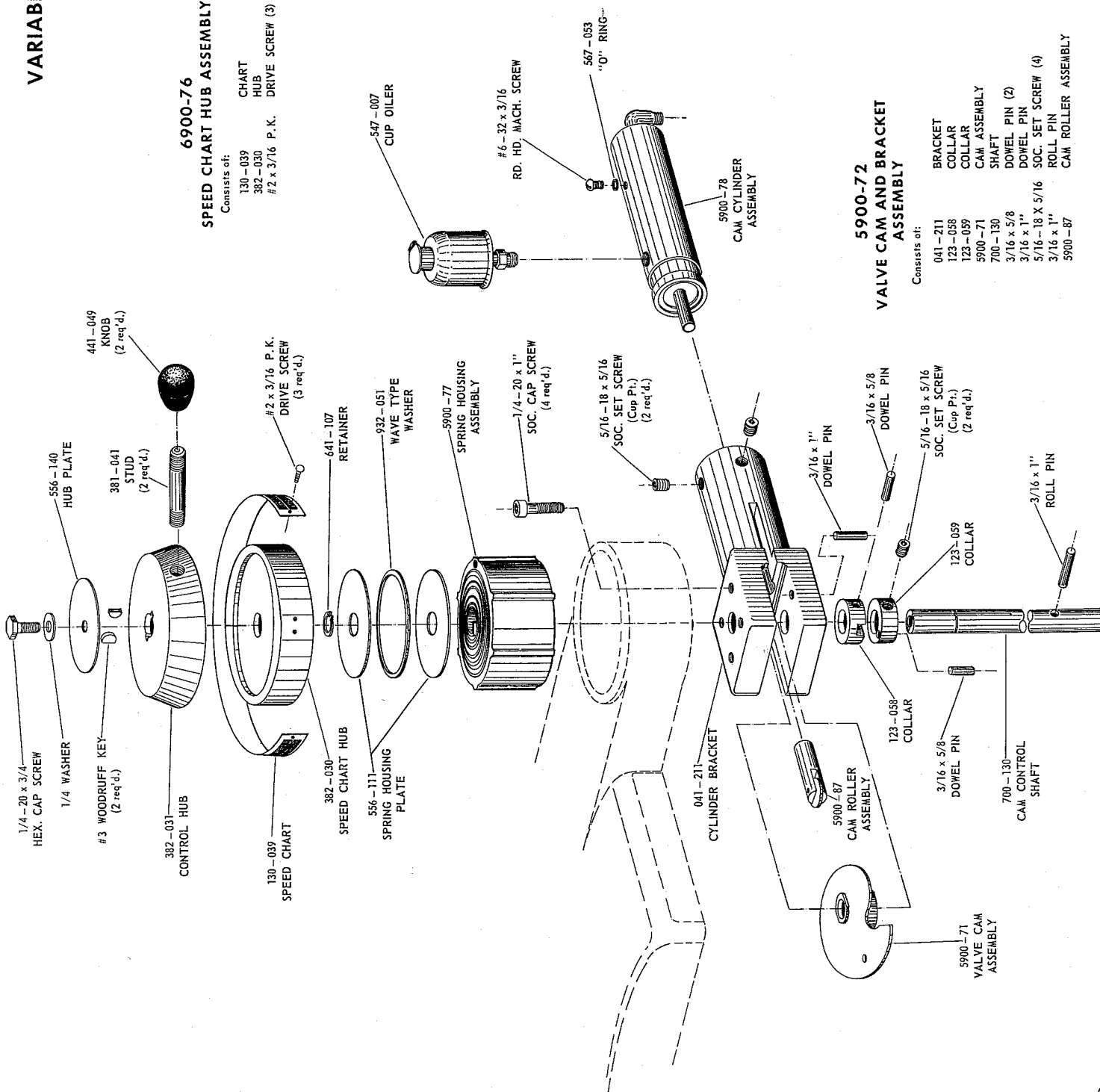


IMPORTANT
 THE PARTS ILLUSTRATED ON
 THIS PAGE ARE FOR LATHES
 SERIAL NUMBERS FROM
 600200

VARIABLE SPEED CONTROL

6900-76 SPEED CHART HUB ASSEMBLY

- Consists of:
 130-039 CHART HUB
 382-030 #2 x 3/16 P.K. DRIVE SCREW (3)



5900-72 VALVE CAM AND BRACKET ASSEMBLY

- Consists of:
 041-211 BRACKET
 123-058 COLLAR
 123-059 COLLAR
 5900-71 CAM ASSEMBLY
 700-130 SHAFT
 3/16 x 5/8 DOWEL PIN (2)
 3/16 x 1" SOC. SET SCREW (4)
 5/16-18 X 5/16 SOC. SET SCREW (4)
 3/16 x 1" ROLL PIN
 5900-87 CAM ROLLER ASSEMBLY

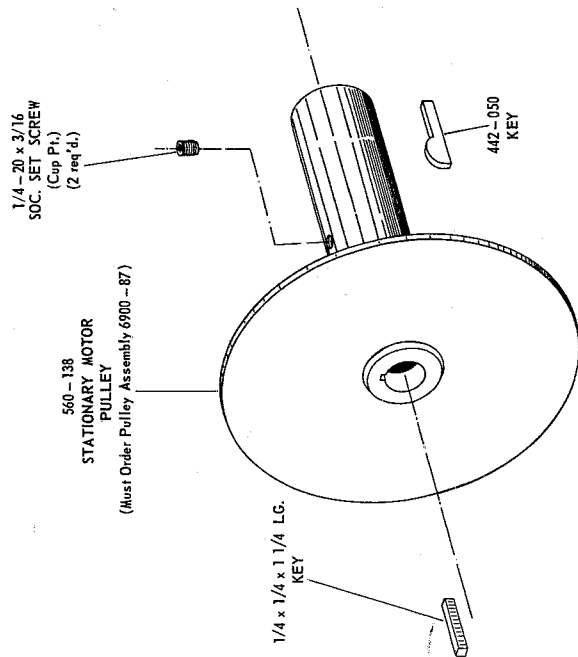
IMPORTANT
 THE PARTS ILLUSTRATED ON
 THIS PAGE ARE FOR LATHES
 SERIAL NUMBERS FROM
 600200

VARIABLE SPEED MOTOR PULLEY ASSEMBLY

6900-87

MOTOR VARI-PULLEY ASSEMBLY

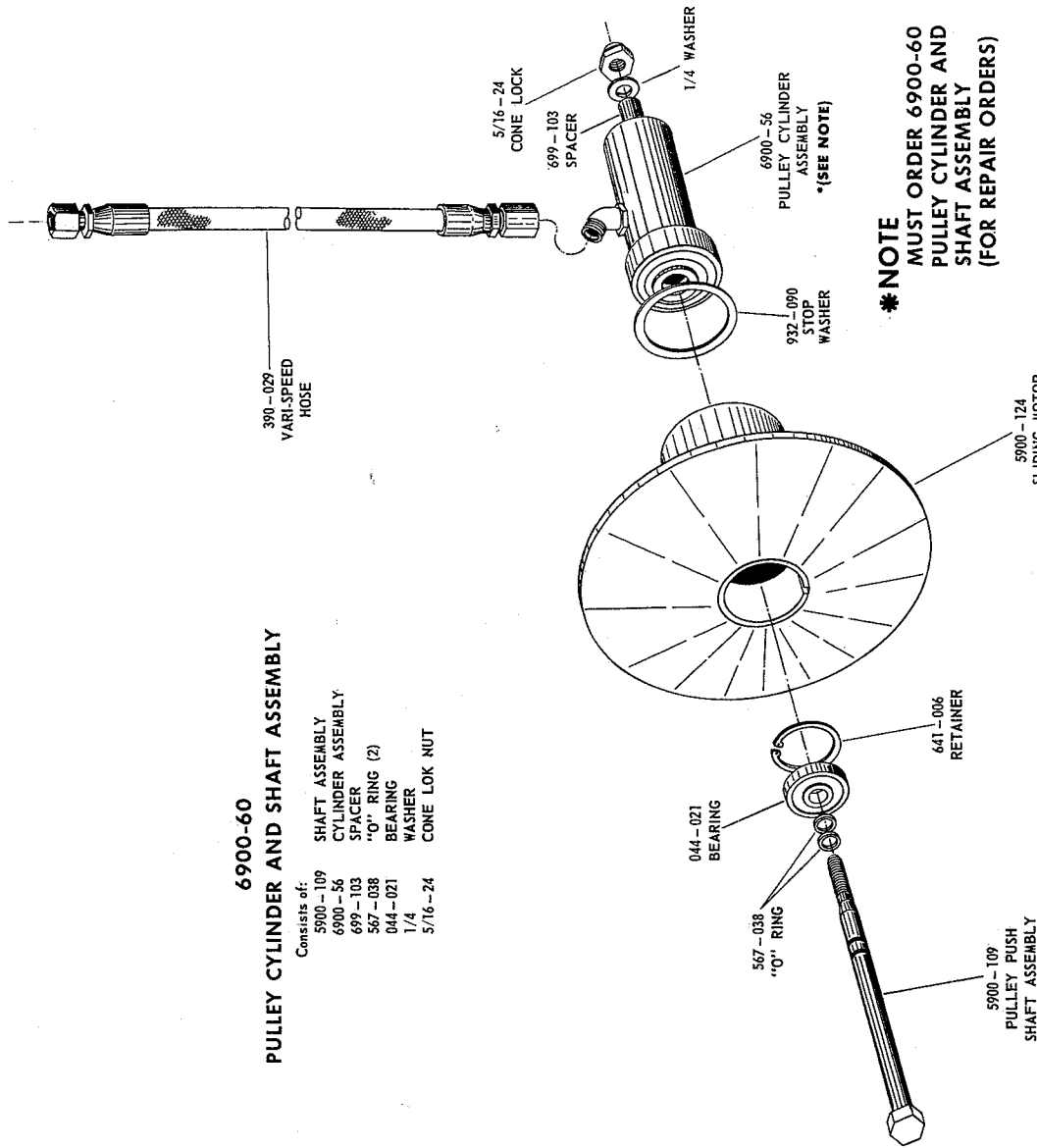
- Consists of:
- 5900-124 PULLEY ASSEMBLY
 - 1/4-20 x 3/16 SOC. SET SCREW (2)
 - 560-138 MOTOR PULLEY ASSEMBLY
 - 442-050 KEY



6900-60

PULLEY CYLINDER AND SHAFT ASSEMBLY

- Consists of:
- 5900-109 SHAFT ASSEMBLY
 - 6900-56 CYLINDER ASSEMBLY
 - 699-103 SPACER
 - 567-038 "O" RING (2)
 - 044-021 BEARING
 - 1/4 WASHER
 - 5/16-24 CONE LOK NUT



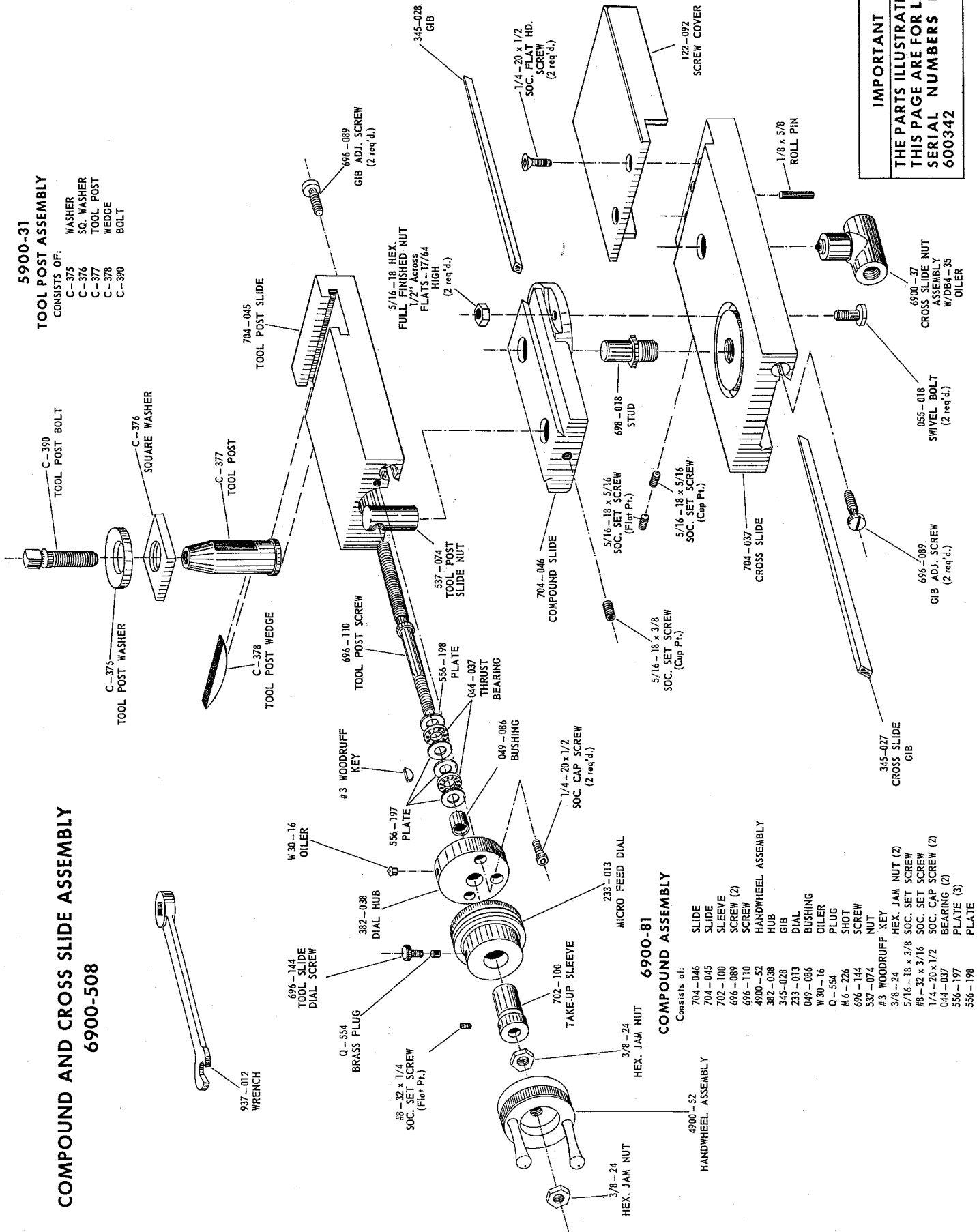
***NOTE**
MUST ORDER 6900-60
PULLEY CYLINDER AND
SHAFT ASSEMBLY
(FOR REPAIR ORDERS)

IMPORTANT
THE PARTS ILLUSTRATED ON
THIS PAGE ARE FOR LATHES
SERIAL NUMBERS FROM
600200

COMPOUND AND CROSS SLIDE ASSEMBLY 6900-508

5900-31 TOOL POST ASSEMBLY

CONSISTS OF:
 C-375 WASHER
 C-376 SO. WASHER
 C-377 TOOL POST
 C-378 WEDGE
 C-390 BOLT



IMPORTANT
 THE PARTS ILLUSTRATED ON
 THIS PAGE ARE FOR LATHES
 SERIAL NUMBERS FROM
 600342

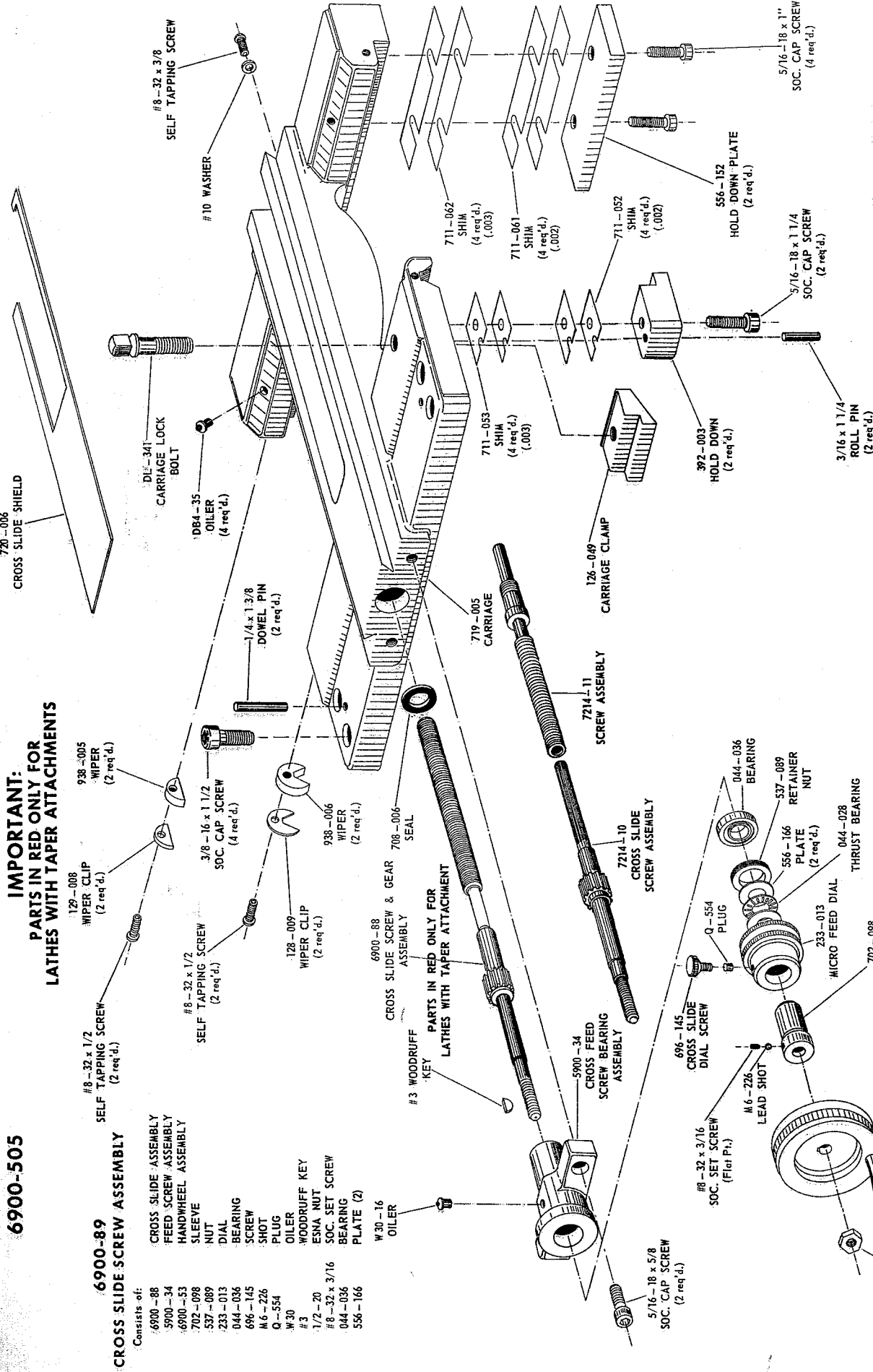
6900-81 COMPOUND ASSEMBLY

Consists of:

- 4900-52 HANDWHEEL ASSEMBLY
- 704-046 SLIDE
- 704-045 SLEEVE
- 702-100 SCREW (2)
- 696-089 SCREW (2)
- 696-110 SCREW
- 4900-52 HANDWHEEL ASSEMBLY
- 382-038 HUB
- 345-028 GIB
- 233-013 DIAL
- 049-086 BUSHING
- W 30-16 OILER
- Q-554 PLUG
- M 6-226 SHOT
- 696-144 SCREW
- 537-074 NUT
- #3 WOODRUFF KEY
- 3-8-24 HEX. JAM NUT (2)
- 5/16-18 x 3/8 SOC. SET SCREW
- #8-32 x 3/16 SOC. SET SCREW
- 1/4-20 x 1/2 SOC. CAP SCREW (2)
- 044-037 BEARING (2)
- 556-197 PLATE (3)
- 556-198 PLATE

CARRIAGE SADDLE ASSEMBLY 6900-505

IMPORTANT:
PARTS IN RED ONLY FOR
LATHES WITH TAPER ATTACHMENTS



CROSS SLIDE SCREW ASSEMBLY

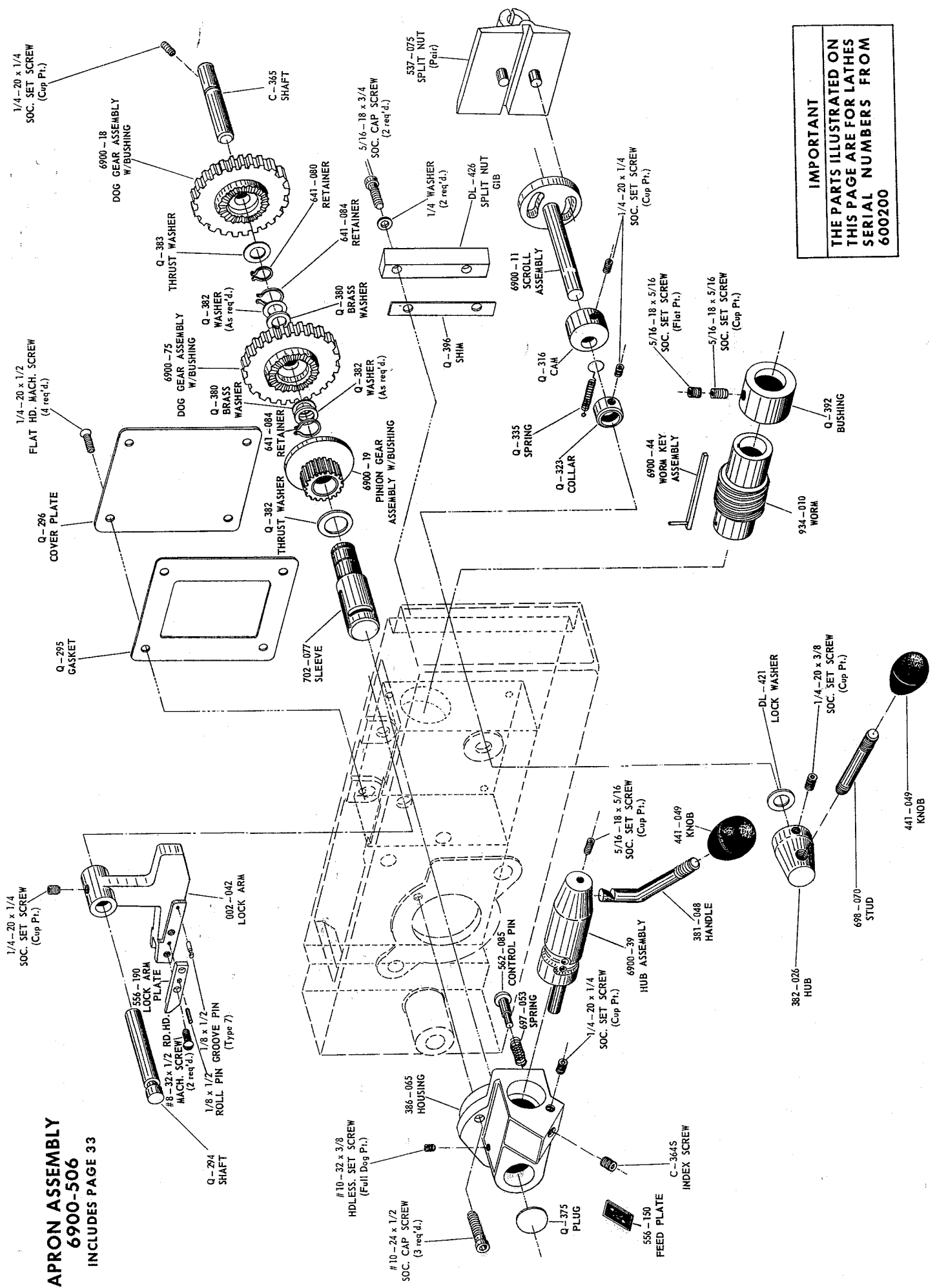
Consists of:

- 6900-88 CROSS SLIDE ASSEMBLY
- 5900-34 FEED SCREW ASSEMBLY
- 6900-53 HANDWHEEL ASSEMBLY
- 702-098 SLEEVE
- 537-089 NUT
- 233-013 BEARING
- 044-036 BEARING
- 696-145 SCREW
- M6-226 SHOT
- Q-554 PLUG
- W30 OILER
- W30-16 OILER
- #3 WOODRUFF KEY
- ESNA NUT
- 1/2-20 ESNA NUT (Type TE) (Light)
- #8-32 x 3/16 SOC. SET SCREW
- 044-036 BEARING
- 556-166 PLATE (2)

IMPORTANT:
PARTS IN RED ONLY FOR
LATHES WITH TAPER ATTACHMENT

IMPORTANT
THE PARTS ILLUSTRATED ON
THIS PAGE ARE FOR LATHES
SERIAL NUMBERS FROM
600200

IMPORTANT
THE PARTS ILLUSTRATED ON
THIS PAGE ARE FOR LATHES
SERIAL NUMBERS FROM
600200

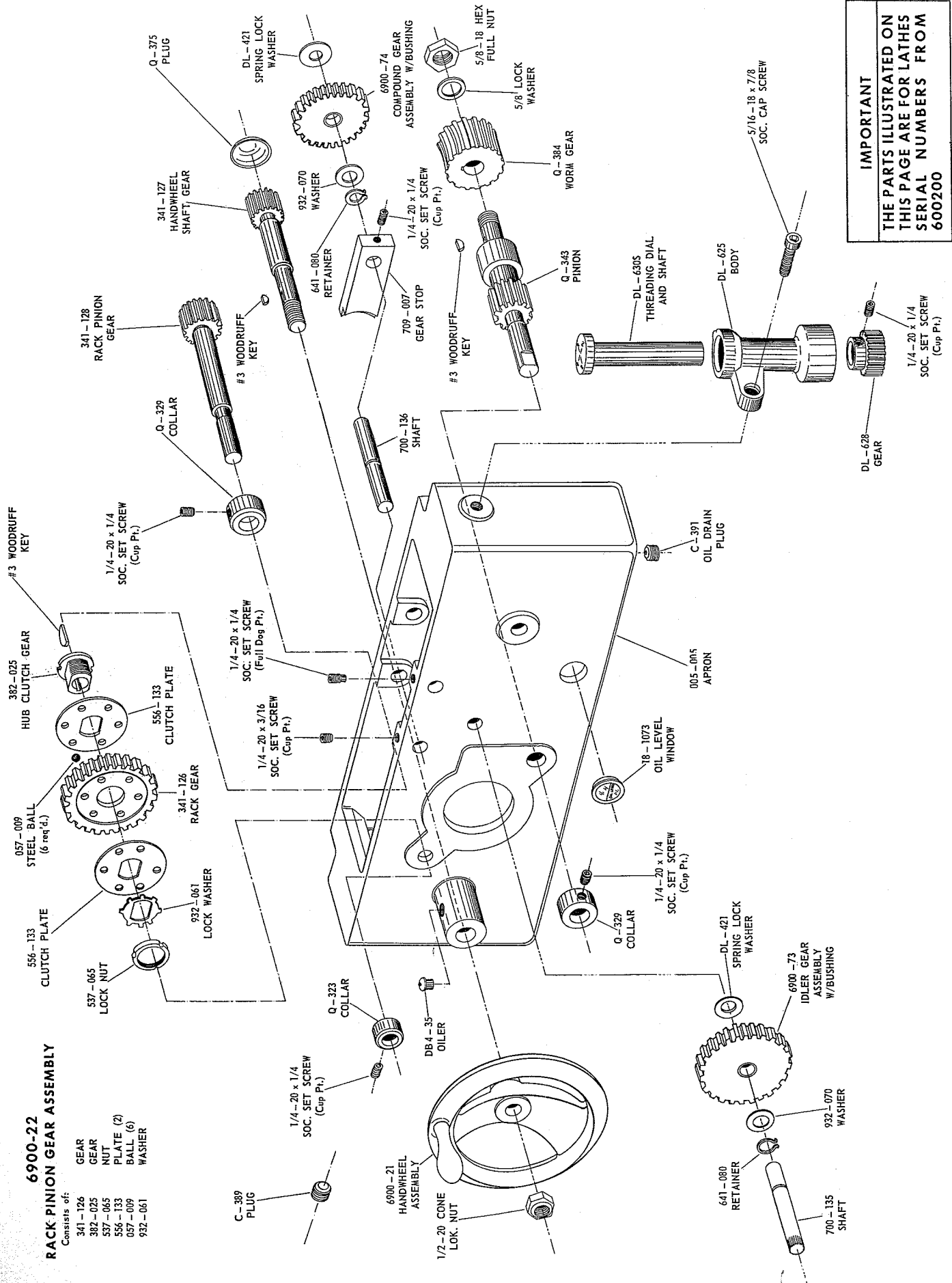


APRON ASSEMBLY
6900-506
INCLUDES PAGE 33

6900-22 RACK PINION GEAR ASSEMBLY

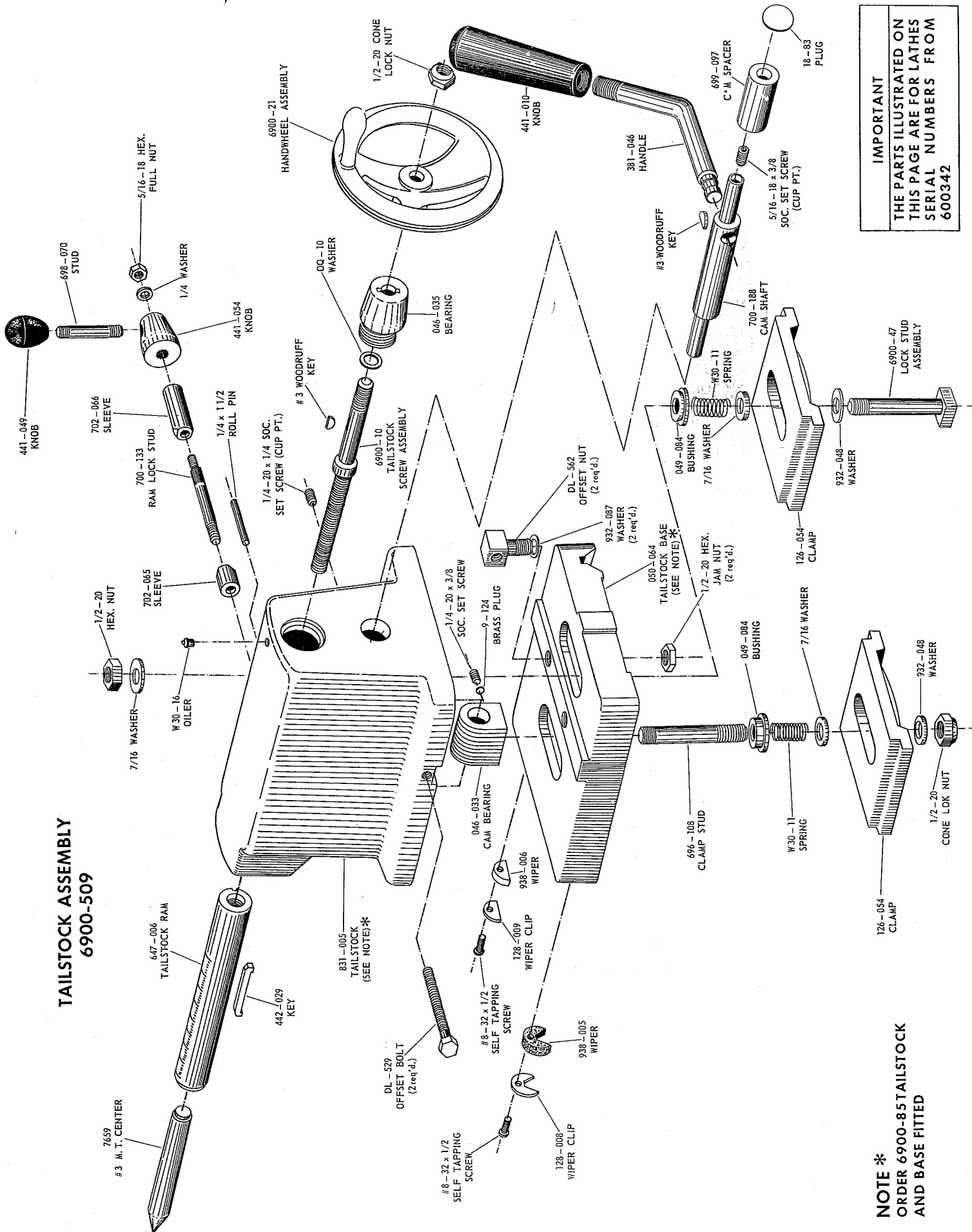
Consists of:

- 341 - 126 GEAR
- 382 - 025 GEAR
- 537 - 065 NUT
- 556 - 133 PLATE (2)
- 057 - 009 BALL (6)
- 932 - 061 WASHER



IMPORTANT
THE PARTS ILLUSTRATED ON
THIS PAGE ARE FOR LATHES
SERIAL NUMBERS FROM
600200

TAILSTOCK ASSEMBLY 6900-509



IMPORTANT
THE PARTS ILLUSTRATED ON
THIS PAGE ARE FOR LATHES
SERIAL NUMBERS FROM
600342

NOTE *
ORDER 6900-85 TAILSTOCK
AND BASE FITTED