

Shield-Arc®

SA-200-F162 & F163

Model Index

NUMBERS IN THE TABLE BELOW INDICATE WHICH COLUMN TO USE IN EACH PARTS LIST FOR EACH INDIVIDUAL CODE NUMBER

DO NOT attempt to use this Parts List for a machine if its code number is not listed. Contact the Service Department for any code numbers not listed. (Only those suffixes which require distinction from the basic codes are shown.)

PARTS LIST TITLES	MISCELLANEOUS ASSEMBLY	CONTROL PANEL	ENGINE COOLING SYSTEM	ENGINE FUEL SYSTEM	ENGINE ELECTRICAL SYSTEM	ENGINE BLOCK & EXTERIOR PARTS	CRANKSHAFT AND PISTON ASSEMBLY	CAMSHAFT, VALVES AND OIL PUMP	WELDING GENERATOR AND COUPLING	GENERATOR BRUSHHOLDER	EXCITER BRUSHHOLDER	IDLER	
	P-23-C	P-23-D	P-23-E	P-23-F	P-23-H	P-23-J	P-23-K	P-23-L	P-23-M	P-25-L	P-25-M	P-71-G	
PARTS LIST NUMBER →													
CODE NUMBER ↓													
3417		1	1	1	2	1	1	1	1	1	1	6	
3418 SM	2	1	1	1	1	1	1	1	1	1	1	6	
3554	2	1	1	1	2	1	1	1	2	1	1	6	
3555 SM	2	1	1	1	1	1	1	1	2	1	1	6	
4113 SMM	1	3	1	1	1	1	1	1	2	1	1	6	
4149	1	2	1	1	2	1	1	1	2	1	1	6	
4150 SM	1	2	1	1	1	1	1	1	2	1	1	6	
4744	1	2	1	1	2	2	1	1	3	1	1	6	
4745 SM	1	2	1	1	1	2	1	1	3	1	1	6	
4815	1	2	1	1	2	1	1	1	2	1	1	6	
4816 SM	1	2	1	1	3	1	1	1	2	1	1	6	
4843 SMM	1	3	1	1	3	1	1	1	2	1	1	6	
4998	1	2	1	1	2	1	1	1	2	1	1	6	
4999 SM	1	2	1	1	3	1	1	1	2	1	1	6	
5065 SMM	1	3	1	1	3	1	1	1	2	1	1	6	
5107	1	2	1	1	2	2	1	1	3	1	1	6	
5108 SM	1	2	1	1	3	2	1	1	3	1	1	6	
5141 SMM	1	3	1	1	3	2	1	1	3	1	1	6	
5336	1	2	1	1	2	2	1	1	3	1	1	6	
5337 SM	1	2	1	1	3	2	1	1	3	1	1	6	
5376 SMM	1	3	1	1	3	2	1	1	3	1	1	6	
5495	1	2	1	1	2	1 or 2	1	1	4	1	1	6	
5496 SM	1	2	1	1	3	2	1	1	4	1	1	6	
5500 SMM	1	3	1	1	3	2	1	1	4	1	1	6	
5537 M	1	3	1	1	2	1 or 2	1	1	4	1	1	6	
5568 SM	1	2	1	1	3	1	1	1	4	1	1	6	
5604	1	2	1	1	5	1	1	1	4	1	1	6	
5642	1	2	1	1	2	1	1	1	4	1	1	6	
5660 SMM	1	3	1	1	3	2	1	1	4	1	1	6	
5696 SMM	1	2	1	1	5	1	1	1	4	1	1	6	
5840	1	2	1	1	2	2	2	1	4	1	1	6	
5841 SM	1	2	1	1	5	2	2	1	4	1	1	6	
5957 SM	1	4	1	1	5	1	1	1	4	1	1	6	
6072	1	4	1	1	2	2	2	1	4	1	1	6	
6073 SM	1	4	1	1	5	2	2	1	4	1	1	6	
6132 SMM	1	4	1	1	5	2	2	1	4	1	1	6	
6339	1	4	1	1	2	2	2	1	4	1	1	6	
6339A	1	4	1	3	2	2	2	1	4	1	1	6	

NUMBERS IN THE TABLE BELOW INDICATE WHICH COLUMN TO USE IN EACH PARTS LIST FOR EACH INDIVIDUAL CODE NUMBER

DO NOT attempt to use this Parts List for a machine if its code number is not listed. Contact the Service Department for any code numbers not listed. (Only those suffixes which require distinction from the basic codes are shown,

PARTS LIST TITLES	MISCELLANEOUS ASSEMBLY	CONTROL PANEL	ENGINE COOLING SYSTEM	ENGINE FUEL SYSTEM	ENGINE ELECTRICAL SYSTEM	ENGINE BLOCK & EXTERIOR PARTS	CRANKSHAFT AND PISTON ASSEMBLY	CAMSHAFT, VALVES AND OIL PUMP	WELDING GENERATOR AND COUPLING	GENERATOR BRUSHHOLDER	EXCITER BRUSHHOLDER	IDLER	
	P-23-C	P-23-D	P-23-E	P-23-F	P-23-H	P-23-J	P-23-K	P-23-L	P-23-M	P-25-L	P-25-M	P-71-G	
PARTS LIST NUMBER →													
CODE NUMBER ↓													
6340 SM	1	4	1	1	5	2	2	1	4	1	1	6	
6340A SM	1	4	1	3	5	2	2	1	4	1	1	6	
6345 SMM	1	4	1	1	5	2	2	1	4	1	1	6	
6345A SMM	1	4	1	3	5	2	2	1	4	1	1	6	
6552 M	1	4	1	3	2	2	2	1	4	1	1	6	
6632	1	4	1	3	2	2	2	1	4	1	1	6	
6633 SM	1	4	1	3	5	2	2	1	4	1	1	6	
6634 SMM	1	4	1	3	5	2	2	1	4	1	1	6	
6779 SM	1	4	1	3	5	2	2	1	4	1	1	6	
6791	1	4	1	3	2	2	2	1	4	1	1	6	
6791-M	1	4	1	3	2	2	2	1	4	1	1	6	
6792 SM	1	4	1	3	5	2	2	1	4	1	1	6	
6934 SM	1	4	1	3	6	2	2	1	4	1	1	6	
6934-M SMM	1	4	1	3	6	2	2	1	4	1	1	6	
7044	1	4	1	3	2	2	2	1	4	1	1	6	
7074 SM	1	4	1	3	6	2	2	1	5	1	1	6	
7074-M SMM	1	4	1	3	6	2	2	1	5	1	1	6	
7078	1	4	1	3	2	2	2	1	5	1	1	6	
7167	1	4	1	3	2	3	2	1	5	1	1	6	
7168 SM	1	4	1	3	6	3	2	1	5	1	1	6	
7168-M SMM	1	4	1	3	6	3	2	1	5	1	1	6	
7213	1	4	1	3	2	3	2	1	5	1	1	6	
7214 SM	1	4	1	3	7	3	2	1	5	1	1	6	
7214-M SMM	1	4	1	3	7	3	2	1	5	1	1	6	
7214-NC SMNC	1	4	1	3	7	3	2	1	5	1	1	6	
7242 SM	1	4	1	3	7	3	2	1	5	1	1	6	

For Codes ABOVE 7242, see P-111.

Winding Specifications and Diagrams P-23-B
 Operating Manual IM208 #

WINDING SPECIFICATIONS AND DIAGRAMS

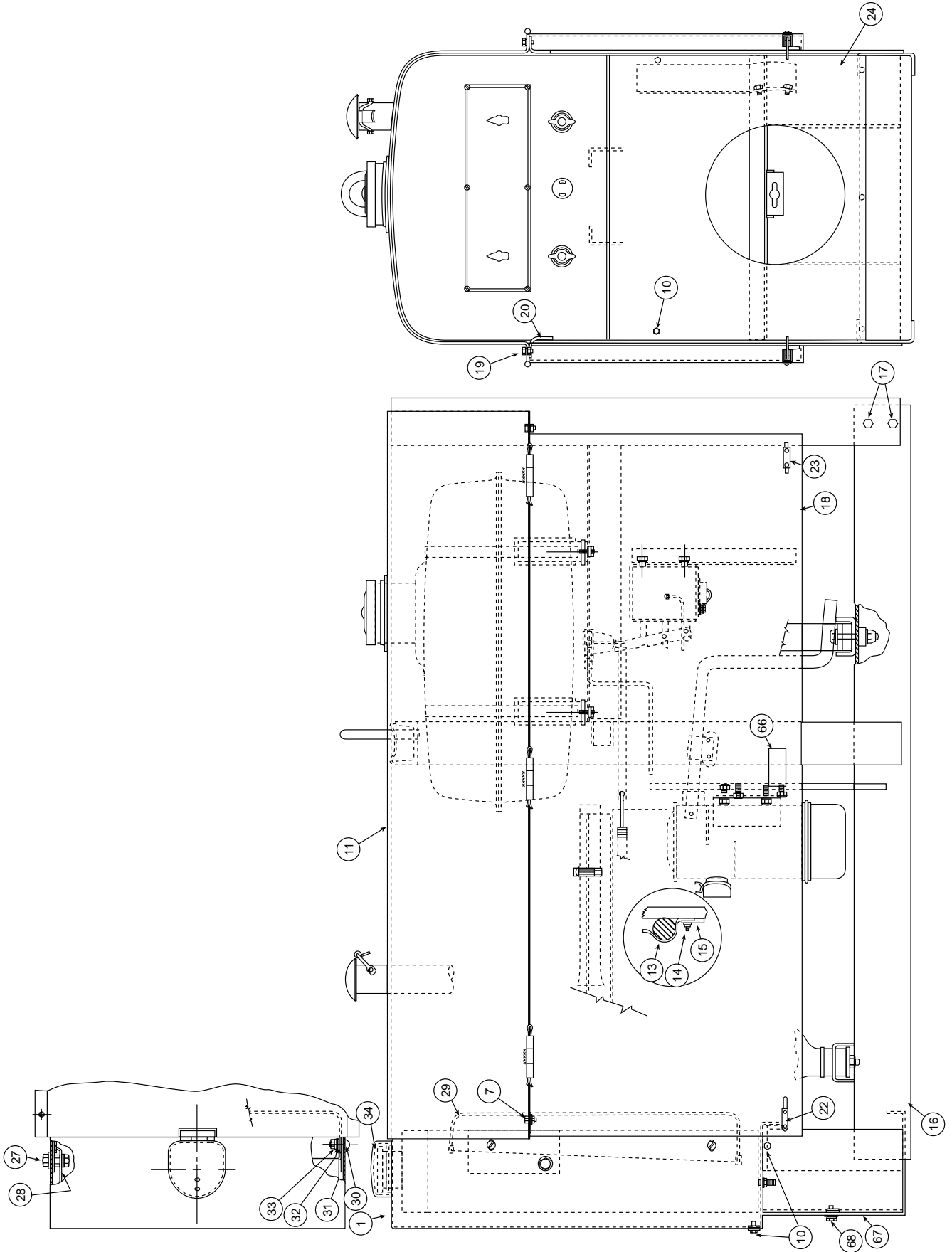
Only those suffixes requiring distinction from the basic codes are shown

CODE NO.	GENERATOR SHUNT FIELD COIL	GENERATOR SERIES FIELD COIL	GENERATOR ARMATURE COIL	SET OF 4 INTERPOLE FIELD COIL	EXCITER FIELD COIL SET	EXCITER ARMATURE COIL	INTERNAL WIRING DIAGRAM
3417	FJW5-Z	FJW115-N	FJW27.6E ∅	S5050 ∅	L8707	M4047-1/24.26B	M8791
3418	FJW5-Z	FJW115-N	FJW27.6E ∅	S5050 ∅	L8707	M4047-1/24.26B	M8791
3554	FJW5-Z	FJW115-N	FJW27.6E ∅	S5050 ∅	L8707	M4047-1/24.26B	M8791
3555	FJW5-Z	FJW115-N	FJW27.6E ∅	S5050 ∅	L8707	M4047-1/24.26B	M8791
4113	FJW5-Z	FJW115-N	FJW27.6E ∅	S5050 ∅	L8707	M4047-1/24.26B	M8791
4149	FJW5-Z	FJW115-N	FJW27.6E ∅	S5050 ∅	L8707	M4047-1/24.26B	M8791
4150	FJW5-Z	FJW115-N	FJW27.6E ∅	S5050 ∅	L8707	M4047-1/24.26B	M8791
4744	FJW5-Z	FJW115-N	FJW27.6E ∅	S5050 ∅	L8707	M4047-1/24.26B	M8791
4745	FJW5-Z	FJW115-N	FJW27.6E ∅	S5050 ∅	L8707	M4047-1/24.26B	M8791
4815	FJW5-Z	FJW115-N	FJW27.6E ∅	S5050 ∅	L8707	M4047-1/24.26B	M8791
4816	FJW5-Z	FJW115-N	FJW27.6E ∅	S5050 ∅	L8707	M4047-1/24.26B	M8791
4843	FJW5-Z	FJW115-N	FJW27.6E ∅	S5050 ∅	L8707	M4047-1/24.26B	M8791
4998	FJW5-Z	FJW115-N	FJW27.6E ∅	S12261-2A	L8707	M4047-1/24.26B	M8791
4999	FJW5-Z	FJW115-N	FJW27.6E ∅	S12261-2A	L8707	M4047-1/24.26B	M8791
5065	FJW5-Z	FJW115-N	FJW27.6E ∅	S12261-2A	L8707	M4047-1/24.26B	M8791
5107	FJW5-Z	FJW115-N	FJW27.6E ∅	S12261-2A	L8707	M4047-1/24.26B	M8791
5108	FJW5-Z	FJW115-N	FJW27.6E ∅	S12261-2A	L8707	M4047-1/24.26B	M8791
5141	FJW5-Z	FJW115-N	FJW27.6E ∅	S12261-2A	L8707	M4047-1/24.26B	M8791
5336	FJW5-Z	FJW115-N	FJW27.6E ∅	S12261-2A	L8707	M4047-1/24.26B	M8791
5337	FJW5-Z	FJW115-N	FJW27.6E ∅	S12261-2A	L8707	M4047-1/24.26B	M8791
5376	FJW5-Z	FJW115-N	FJW27.6E ∅	S12261-2A	L8707	M4047-1/24.26B	M8791
5495	FJW5-Z	FJW115-N	FJW27.6E ∅	S12261-2A	L8707	M4047-1/24.26B	M8791
5496	FJW5-Z	FJW115-N	FJW27.6E ∅	S12261-2A	L8707	M4047-1/24.26B	M8791
5500	FJW5-Z	FJW115-N	FJW27.6E ∅	S12261-2A	L8707	M4047-1/24.26B	M8791
5537	FJW5-Z	FJW115-N	FJW27.6E ∅	S12261-2A	L8707	M4047-1/24.26B	M8791
5568	FJW5-Z	FJW115-N	FJW27.6E ∅	S12261-2A	L8707	M4047-1/24.26B	M8791
5604	FJW5-Z	FJW115-N	FJW27.6E ∅	S12261-2A	L8707	M4047-1/24.26B	M8791
5642	FJW5-Z	FJW115-N	FJW27.6E ∅	S12261-2A	L8707	M4047-1/24.26B	M8791
5660	FJW5-Z	FJW115-N	FJW27.6E ∅	S12261-2A	L8707	M4047-1/24.26B	M8791
5696	FJW5-Z	FJW115-N	FJW27.6E ∅	S12261-2A	L8707	M4047-1/24.26B	M8791
5840	FJW5-Z	FJW115-N	FJW27.6E ∅	S12261-2A	L8707	M4047-1/24.26B	M8791
5841	FJW5-Z	FJW115-N	FJW27.6E ∅	S12261-2A	L8707	M4047-1/24.26B	M8791
5957	FJW5-Z	FJW115-N	FJW27.6E ∅	S12261-2A	L8707	M4047-1/24.26B	M8791
6072	FJW5-Z	FJW115-N	FJW27.6E ∅	S12261-2A	L8707	M4047-1/24.26B	M8791
6073	FJW5-Z	FJW115-N	FJW27.6E ∅	S12261-2A	L8707	M4047-1/24.26B	M8791
6132	FJW5-Z	FJW115-N	FJW27.6E ∅	S12261-2A	L8707	M4047-1/24.26B	M8791
6339	FJW5-Z	FJW115-N	FJW27.6E ∅	S12261-2A	L8707	M4047-1/24.26B	M8791
6339A	FJW5-Z	FJW115-N	FJW27.6E ∅	S12261-2A	L8707	M4047-1/24.26B	M8791
6340	FJW5-Z	FJW115-N	FJW27.6E ∅	S12261-2A	L8707	M4047-1/24.26B	M8791
6340A	FJW5-Z	FJW115-N	FJW27.6E ∅	S12261-2A	L8707	M4047-1/24.26B	M8791
6345	FJW5-Z	FJW115-N	FJW27.6E ∅	S12261-2A	L8707	M4047-1/24.26B	M8791
6345A	FJW5-Z	FJW115-N	FJW27.6E ∅	S12261-2A	L8707	M4047-1/24.26B	M8791
6552	FJW5-Z	FJW115-N	FJW27.6E ∅	S12261-2A	L8707	M4047-1/24.26B	M8791
6632	FJW5-Z	FJW115-N	FJW27.6E ∅	S12261-2A	L8707	M4047-1/24.26B	M8791
6633	FJW5-Z	FJW115-N	FJW27.6E ∅	S12261-2A	L8707	M4047-1/24.26B	M8791
6634	FJW5-Z	FJW115-N	FJW27.6E ∅	S12261-2A	L8707	M4047-1/24.26B	M8791
6779	FJW5-Z	FJW115-N	FJW27.6E ∅	S12261-2A	L8707	M4047-1/24.26B	M8791
6791	FJW5-Z	FJW115-N	FJW27.6E ∅	S12261-2A	L8707	M4047-1/24.26B	M8791
6791M	FJW5-Z	FJW115-N	FJW27.6E ∅	S12261-2A	L8707	M4047-1/24.26B	M8791
6792	FJW5-Z	FJW115-N	FJW27.6E ∅	S12261-2A	L8707	M4047-1/24.26B	M8791
6934	FJW5-Z	FJW115-N	FJW27.6E ∅	S12261-2A	L8707	M4047-1/24.26B	M8791
6934M	FJW5-Z	FJW115-N	FJW27.6E ∅	S12261-2A	L8707	M4047-1/24.26B	M8791
7044	FJW5-Z	FJW115-N	FJW27.6E ∅	S12261-2A	L8707	M4047-1/24.26B	M8791
7074	FJW5-AJ	FJW115-T	FJW27.6E ∅	S12261-15A (2) ∅ & -16A ∅ (2)	L8707	M4047-1/24.26B	M8791
7074M	FJW5-AJ	FJW115-T	FJW27.6E ∅	S12261-15A (2) ∅ & -16A ∅ (2)	L8707	M4047-1/24.26B	M8791
7078	FJW5-AJ	FJW115-T	FJW27.6E ∅	S12261-15A (2) ∅ & -16A ∅ (2)	L8707	M4047-1/24.26B	M8791
7167	FJW5-AJ	FJW115-T	FJW27.6E ∅	S12261-15A (2) ∅ & -16A ∅ (2)	L8707	M4047-1/24.26B	M8791
7168	FJW5-AJ	FJW115-T	FJW27.6E ∅	S12261-15A (2) ∅ & -16A ∅ (2)	L8707	M4047-1/24.26B	M8791
7168M	FJW5-AJ	FJW115-T	FJW27.6E ∅	S12261-15A (2) ∅ & -16A ∅ (2)	L8707	M4047-1/24.26B	M8791
7213	FJW5-AJ	FJW115-T	FJW27.6E ∅	S12261-15A (2) ∅ & -16A ∅ (2)	L8707	M4047-1/24.26B	M8791
7214	FJW5-AJ	FJW115-T	FJW27.6E ∅	S12261-15A (2) ∅ & -16A ∅ (2)	L8707	M4047-1/24.26B	M8791
7214M	FJW5-AJ	FJW115-T	FJW27.6E ∅	S12261-15A (2) ∅ & -16A ∅ (2)	L8707	M4047-1/24.26B	M8791
7214NC	FJW5-AJ	FJW115-T	FJW27.6E ∅	S12261-15A (2) ∅ & -16A ∅ (2)	L8707	M4047-1/24.26B	M8791
7242	FJW5-AJ	FJW115-T	FJW27.6E ∅	S12261-15A (2) ∅ & -16A ∅ (2)	L8707	M4047-1/24.26B	M8791

∅ This part is obsolete and no longer available.

Index of Sub Assemblies

GENERAL ASSEMBLY



Index of Sub Assemblies
 Sub Assembly Illustration
 Index of Sub Assemblies
 Sub Assembly Illustration
 Index of Sub Assemblies
 Sub Assembly Illustration
 Index of Sub Assemblies
 Sub Assembly Illustration

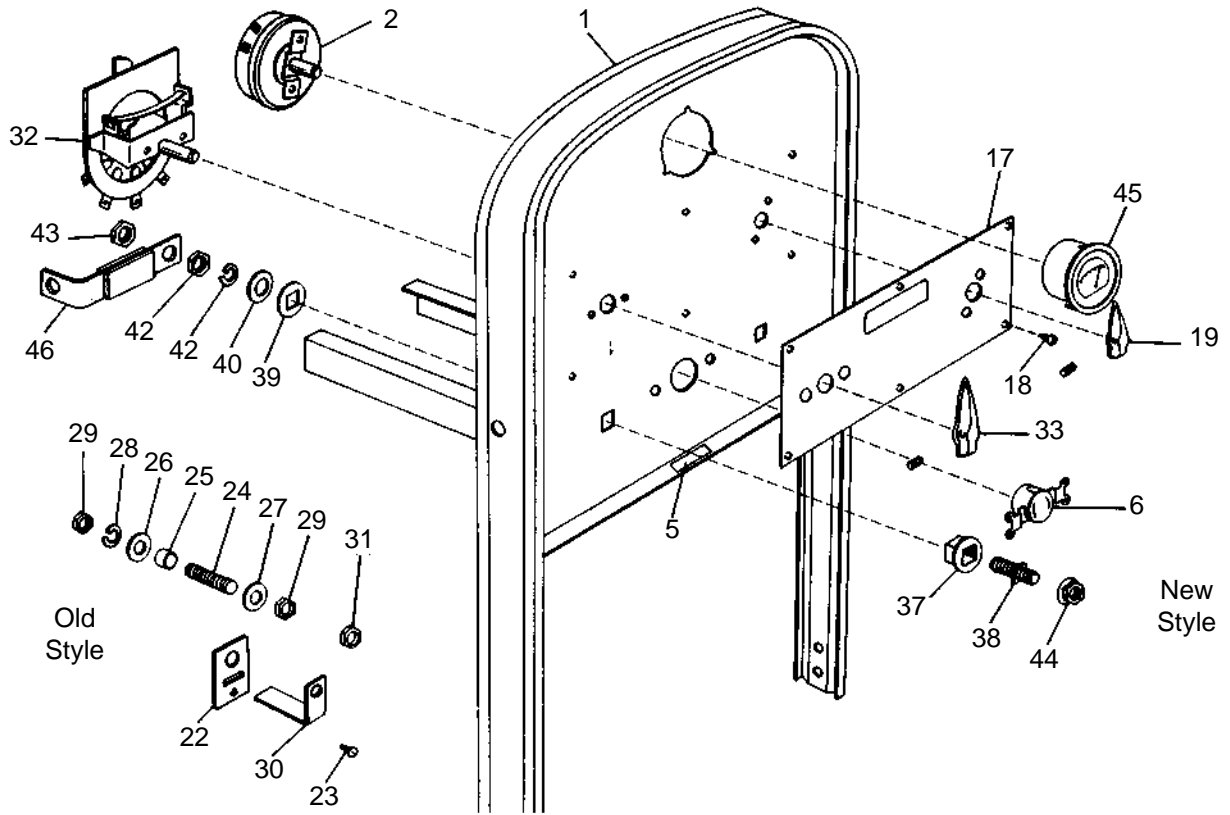
SA-200-F162 & F163				Use only the parts marked "X" in the column under the heading number called for in the model index page.								
# Indicates a Change This Printing												
ITEM	DESCRIPTION	PART NO.	QTY.	1	2	3	4	5	6	7	8	9
1	Radiator Shell and Screen Assembly	L3403 \emptyset	1	X	X							
7	Hex Head Bolt - Front Roof Mounting	5/16-18 x 1-1/4	2	X	X							
	Hug Nut - Front Roof Mounting	T9187	2	X	X							
	Plain Washer - Front Roof Mounting	S9262-121	2	X	X							
10	Thread Cutting Screw - Mounts Radiator Shell											
	and Rear Panel	S9225-8	6 or 9	X	X							
11	Roof	L3384	1	X	X							
13	Clamp - Crank	T10474 \emptyset	1	X	X							
14	Round Head Screw - Clamp Mounting	1/4-20 x 5/8	2	X	X							
	Hex Nut - Clamp Mounting	1/4-20	2	X	X							
	Lockwasher	E106A-2	2	X	X							
15	Washer	S9262-63	1	X	X							
16	Base Assembly	L3385 \emptyset	1	X	X							
17	Hex Head Bolt - Rear Roof Support to Base	3/8-16 x 1	4	X	X							
	Hex Nut - Rear Roof Support to Base	3/8-16	4	X	X							
	Lockwasher - Rear Roof Support to Base	E106A-4	4	X	X							
18	Door	L6659-A	2	X	X							
19	Hex Head Bolt - Rear Roof Mounting	5/16-18 x 1-1/4	2	X	X							
	Hug Nut - Rear Roof Mounting	T9187	2	X	X							
20	Rear Roof Mounting Angle	S13593	2	X	X							
22	Door Hook	S10656-1	2	X	X							
23	Door Hook	S10656-2	2	X	X							
	Thread Cutting Screw - Door Hook Mounting	S8025-70	8	X	X							
	Washer - Door Hook Mounting	T10878	4	X	X							
24	Lower Control Panel (Not Used on Codes Above 5900)	L3387	1	X	X							
27	Hex Head Bolt - Shell to Radiator	5/16-18 x 1-1/2	2	X	X							
	Washer - Shell to Radiator	S9262-120	2	X	X							
	Hex Nut - Shell to Radiator	5/16-18	2	X	X							
28	Plain Washer - Shell to Radiator	S9262-121	2	X	X							
28	Lockwasher - Shell to Radiator	E106A-3	2	X	X							
29	Radiator Shroud Assembly Includes:	M8858	1	X	X							
29	Radiator Shroud Assembly Includes: (Codes Above 6000)	M8858-3	1	X	•							
30	Sems Screw - Shroud to Shell	T10082-16	4	X	X							
31	Washer - Shroud to Shell	S9262-23	4	X	X							
32	Lockwasher - Shroud to Shell	E106A-2	4	X	X							
33	Hex Nut - Shroud to Shell	1/4-20	4	X	X							
66	Door Decal	T11030	2	X	X							
67	Base Panel (Below Code 4700)	S10403 \emptyset	1	X	X							
67	Base Panel (Above Code 4700)	S15639-1	1	X	•							
68	Hex Head Screw - Panel Mounting	1/4-20 x 1/2	2	X	X							
	Lockwasher - Panel Mounting	E106A-2	2	X	X							
	Lincoln Decal	S11893-4	2	X	X							

#

#

\emptyset This part is obsolete and no longer available.

CONTROL PANEL



Index of Sub Assemblies

Part Numbers

Index of Sub Assemblies

Part Numbers

Index of Sub Assemblies

Part Numbers

Index of Sub Assemblies

Part Numbers

Use only the parts marked "X" in the column under the heading number called for in the model index page.

Indicates a Change This Printing

ITEM	DESCRIPTION	PART NO.	QTY.	1	2	3	4	5	6	7	8	9
1	Radiator Shell and Screen Assembly	L3403 \emptyset	1	X	X							
1	Control Panel and Gas Tank Rail	M9085-3	1	•	•	X	•					
1	Control Panel and Gas Tank Rail	M9085-1 \emptyset	1	•	X	•	•					
1	Control Panel and Gas Tank Rail	M9085-2 \emptyset	1	X	•	•	•					
1	Control Panel Assembly, Includes: Front Panel	G1217	1	•	•	•	X					
	Gas Tank Rail (Left From Control Panel End)	M10996-B	1	•	•	•	X					
	Gas Tank Rail (Right From Control Panel End)	M10996-A	1	•	•	•	X					
2	Rheostat	M5090-C	1	X	X	X	X					
5	Instruction Decal	T10829	1	X	X	X	X					
6	Receptacle	S14824	1	X	X	X	X					
	Round Head Screw, Lead to Rheostat	#8-32 x 1/2	2	X	X	X	X					
	Lockwasher, Lead to Rheostat	E106A-2	4	X	X	X	X					
	Hex Nut, Lead to Rheostat	#8-32	4	X	X	X	X					
17	Nameplate (Code: 5957 and Above)	M10926 \emptyset	1	X	X	X	X					
17	Nameplate (Code: 5841 and Below)	M8803	1	X	X	X	X					
18	Self Tapping Screw	S8025-12	6	X	X	X	X					
19	Rheostat Handle	S16664-4	1	X	X	X	X					
22	Insulator	T10089	1	X	•	•	•					
23	Output Stud Assembly, (Code 3555 and Below) Includes: 24 Through 31 Except 30	T8061	2	X	•	•	•					
24	Stud	T6931-2	1	X	•	•	•					
25	Insulating Tube	T4122	1	X	•	•	•					
26	Insulating Washer	S10773-9	1	X	•	•	•					
27	Flat Washer	S9262-1	2	X	•	•	•					
28	Lockwasher	E106A-5	1	X	•	•	•					
29	Hex Jam Nut	1/2-13	2	X	•	•	•					
30	Connection Strap	T8141	1	X	•	•	•					
31	Weld Nut	T3960	1	X	•	•	•					
32	Selector Switch	M11013	1	X	X	X	X					
33	Selector Switch Handle	S16664-6	1	X	X	X	X					
	Output Stud Assembly, (Code 4113 and Above), Includes: 37 Through 44	S11125-1	2	•	X	X	X					
37	Insulator	S10958-3	1	•	X	X	X					
38	Stud	S11111	1	•	X	X	X					
39	Insulating Washer	T11195	1	•	X	X	X					
40	Flat Washer	S9262-1	1	•	X	X	X					
41	Lockwasher	E106A-5	1	•	X	X	X					
42	Hex Jam Nut	1/2 x 13	1	•	X	X	X					
43	Brass Nut	T10114	1	•	X	X	X					
44	Weld Nut	T3960	1	•	X	X	X					
45	Volt-ammeter (Optional)	S4934-1	1	•	•	X	X					
46	Shunt Assembly	S6602-2 \emptyset	1	•	•	X	X					

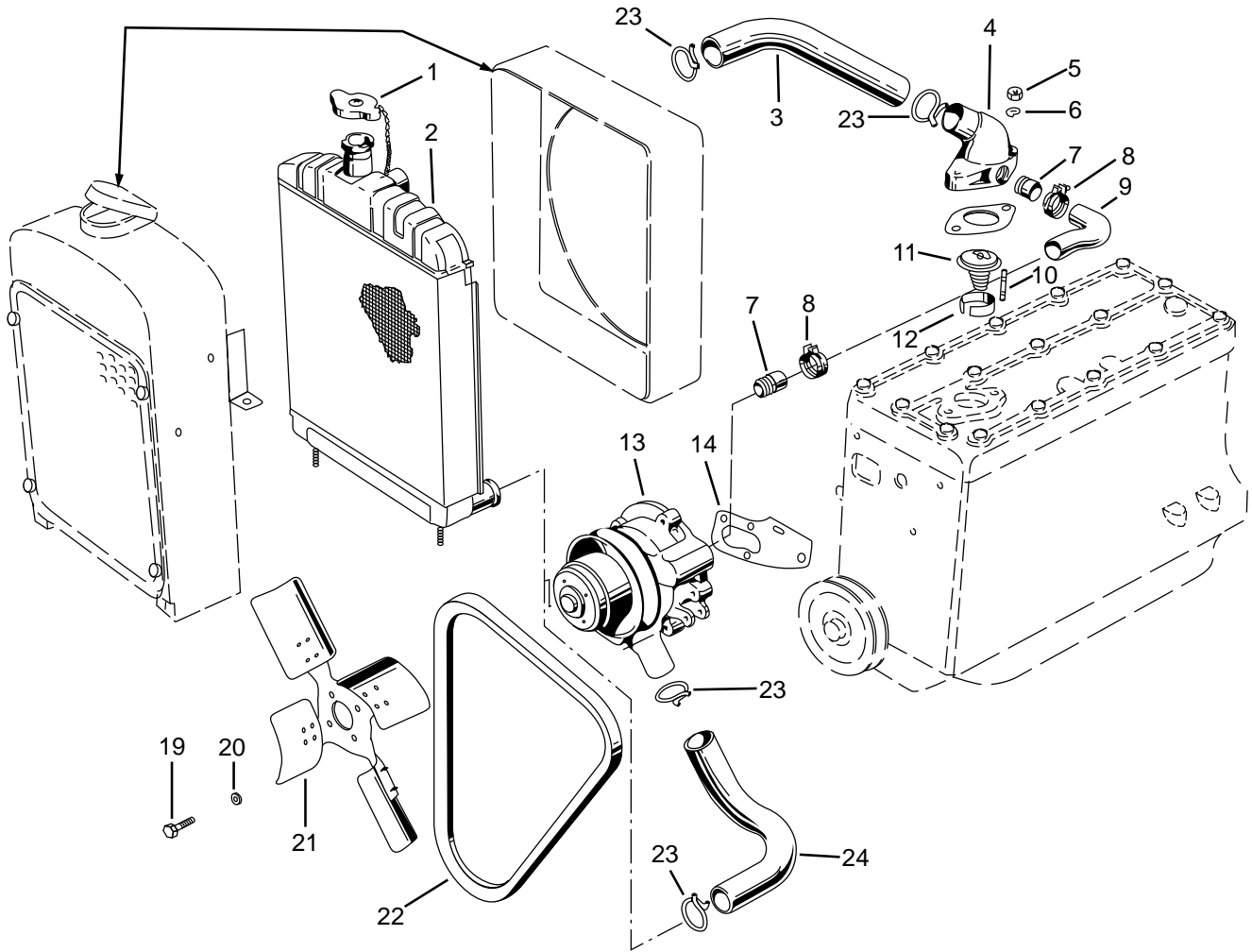
#

\emptyset This part is obsolete and no longer available.

Index of Sub Assemblies
 Sub Assembly Illustration
 Index of Sub Assemblies
 Sub Assembly Illustration
 Index of Sub Assemblies
 Sub Assembly Illustration
 Index of Sub Assemblies
 Sub Assembly Illustration
 Index of Sub Assemblies
 Sub Assembly Illustration

ENGINE COOLING SYSTEM

See P-23-C or P-111-C

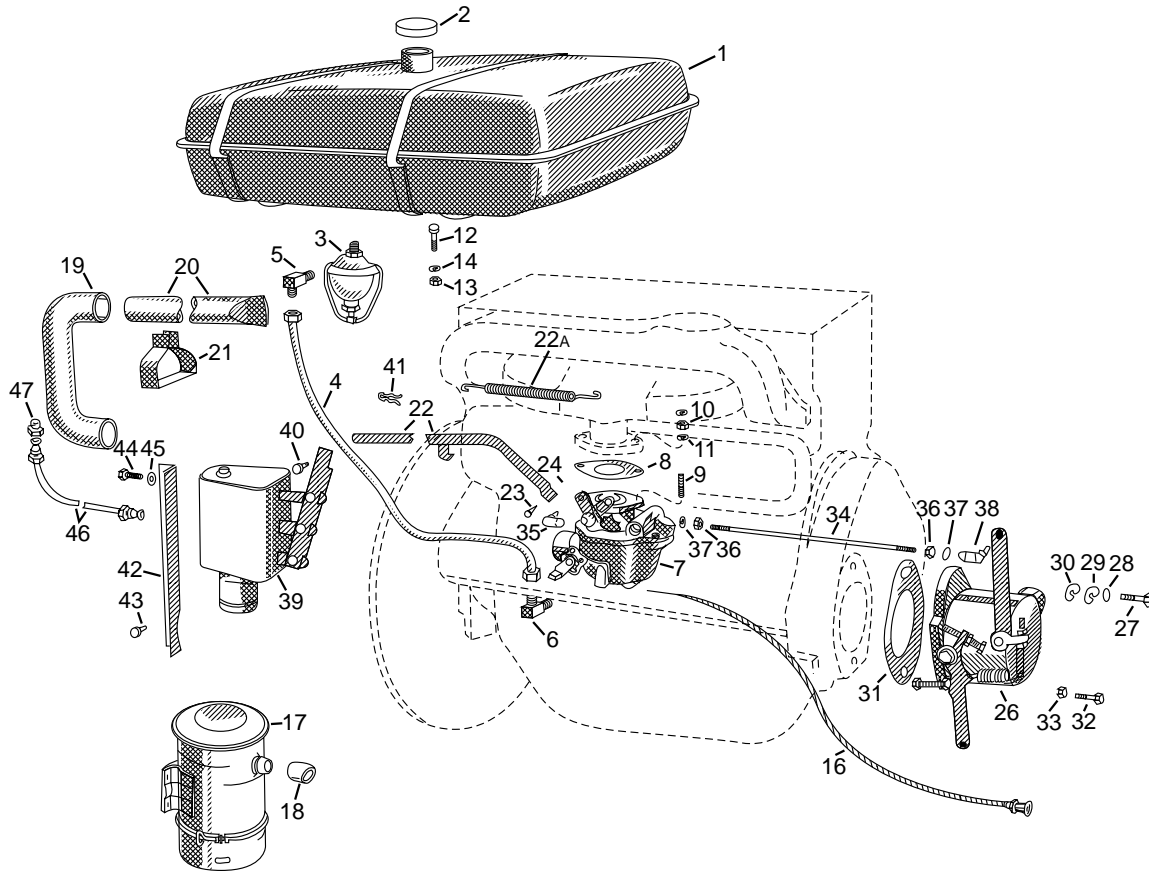


Index of Sub Assemblies
 Sub Assembly Illustration
 Index of Sub Assemblies
 Sub Assembly Illustration
 Index of Sub Assemblies
 Sub Assembly Illustration
 Index of Sub Assemblies
 Sub Assembly Illustration

		Use only the parts marked "X" in the column under the heading number called for in the model index page.										
# Indicates a Change This Printing												
ITEM	DESCRIPTION	PART NO.	QTY.	1	2	3	4	5	6	7	8	9
1	Radiator Cap	S9970	1	X								
* 2	Radiator	G1087	1	X								
	Hex Nut	1/2-13	2	X								
	Washer	S9262-5	2	X								
	Lock Washer	E106A-5	2	X								
	Rubber Washers (Mount to Frame)	T10355-3	2	X								#
3	Radiator Hose - Upper	S9788	1	X								
4	Cylinder Water Outlet Elbow	*	1	X								
5	Nut - Cylinder Water Outlet Elbow to Head	T10940-1	2	X								
6	Lockwasher - Cylinder Water Outlet Elbow to Head	E106A-11	2	X								
7	Nipple - Thermostat Bypass	T10113	2	X								
8	Hose Clamp - Thermostat Bypass	T13777-3 Ø	2	X								#
9	Hose - Thermostat Bypass	T9950	1	X								
10	Stud - Cylinder Water Outlet Elbow to Head	*	2	X								
	Gasket - Cylinder Water Outlet Elbow	*	1	X								
11	Thermostat	*	1	X								
	Decal	*	1	X								
12	Thermostat Adapter Ring	S9250-342 Ø	1	X								#
13	Water Pump	*	1	X								
	Water Pump Repair Kit	*	1	X								
14	Gasket	*	1	X								
	Copper Washer	*	1	X								
	Screw & Lock Washer, WP - Upper Left & Lower Center	*	2	X								
	Screw & Washer, WP - Upper Right	*	1	X								
	Screw, WP - Upper Center	*	1	X								
19	Hex Head Screw	5/16-18 x 3/4	4	X								
20	Lock Washer	E106A-3	4	X								
21	Fan Blade Assembly	L2649	1	X								
22	Fan Belt - No Starter	S8075	1	X								
22	Fan Belt - With Starter and Generator	S8074	1	X								
22	Fan Belt - With Starter and Alternator (Below Code 7250)	T13274	1	X								
22	Fan Belt - With Starter and Alternator (Above Code 7250)	T13536	1	X								
23	Radiator Hose Clamp	S10888-8	4	X								
24	Radiator Hose - Lower	M7999	1	X								
*	These parts are not normally stocked by Lincoln. For fastest service on these parts order from your area Continental parts distributor using the part description and engine nameplate data.											

Ø This part is obsolete and no longer available.

ENGINE FUEL SYSTEM



Use only the parts marked "X" in the column under the heading number called for in the model index page.

Indicates a Change This Printing

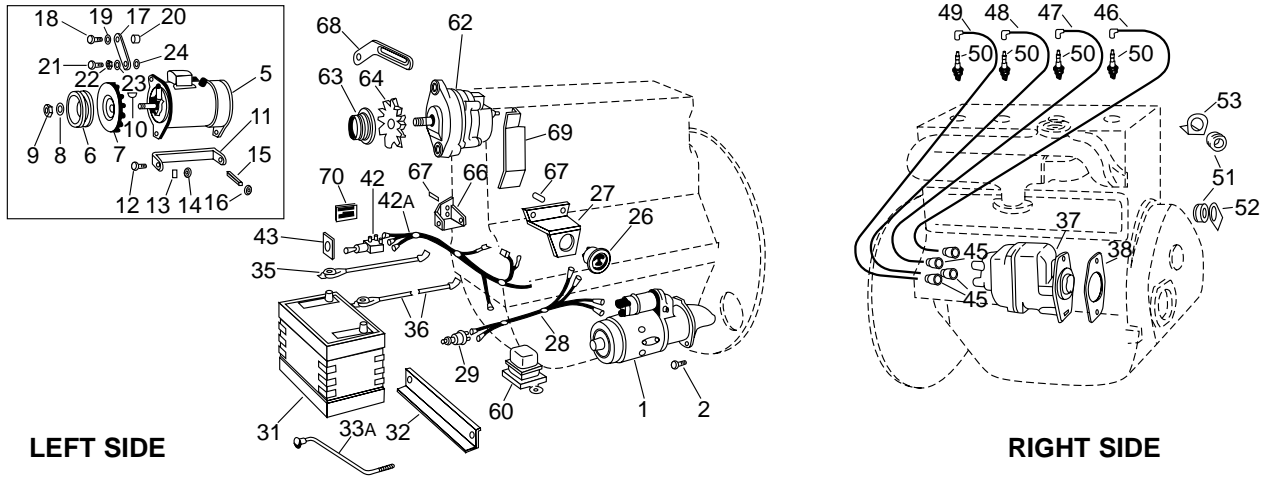
ITEM	DESCRIPTION	PART NO.	QTY.	1	2	3	4	5	6	7	8	9
1	Fuel Tank	L3398-3	1	X	X	X						
	Filler Neck Gasket	S10437-A	1	X	X	X						
2	Filler Cap	S10149	1	X	X	X						
3	Fuel Strainer, Includes:	S6185	1	X	X	X						
	Bowl	S6185-1	1	X	X	X						
	Screen	S6185-2	1	X	X	X						
	Gasket	S6185-3	1	X	X	X						
4	Fuel Line, Includes:	S8099-10	1	X	X	X						
	Fitting	T10954-1	2	X	X	X						
	Fuel Line Clip	T11076 Ø	2	X	X	X						
5	Fitting - Fuel Line to Strainer	T10953	1	X	X	X						
6	Elbow - Fuel Line to Carburetor	T11012	1	X	X	X						
7	Carburetor	S17423-1 Ø	1	X	•	X						
	S9790 Carburetor Repair Kit	S9790-1 Ø	1	X	•	X						
7	Carburetor (SAF-300 - F162 & F163)	S12875	1	•	X	•						
8	Gasket - Marvel Schebler Only	S9233	1	X	X	X						
8	Gasket - Facet Only	S9233-1	3	X	X	X						
9	Stud - Carburetor Mounting - Marvel Schebler Only	T9954	2	X	X	X						
9	Stud - Carburetor Mounting - Facet Only	T9954-1	2	X	X	X						
10	Nut - Carburetor Mounting	5/16-18	2	X	X	X						
11	Lock Washer - Carburetor Mounting	E106A-3	2	X	X	X						
12	Square Head Bolt - Gas Tank Mounting	3/8-16 x 1-1/4	4	X	X	•						
12	Hex Head Bolt - Gas Tank Mounting	3/8-16 x 1-3/4	4	•	•	X						

#

Ø This part is obsolete and no longer available.

Index of Sub Assemblies
 Part Numbers
 Index of Sub Assemblies
 Part Numbers
 Index of Sub Assemblies
 Part Numbers
 Index of Sub Assemblies
 Part Numbers

ENGINE ELECTRICAL SYSTEM



Machines above code 4800
equipped with 12 volt systems

		Use only the parts marked "X" in the column under the heading number called for in the model index page.										
# Indicates a Change This Printing												
ITEM	DESCRIPTION	PART NO.	QTY.	1	2	3	4	5	6	7	8	9
1	Starting Motor (6 Volt) Starter Spacer (6 Volt Only)	Order from Delco #1109460 S8073 \emptyset	1									
1	Starting Motor (12 Volt)	L4334	1	•	•	X	X	X	X	X		
2	Hex Head Screw (Starter Mounting)	7/16-14 x 1-1/2	2	X	•	•	•	•	•	•		
2	Hex Head Screw (Starter Mounting)	T8833-1	2	•	•	X	X	X	X	X		
3	Lock Washer (Starter Mounting)	E106A-8	2	X	•	X	X	X	X	X		
	Starter Hole Cover	S8076 \emptyset	1	•	X	•	•	•	•	•		
	Generator Assembly, Includes: (6 Volt)	L3308-1	1	X	•	•	•	•	•	•		
5	Generator Assembly, Includes: (12 Volt)	M12103 \emptyset	1	•	•	X	X	X	•	•		
5	Generator	L3308	1	X	•	•	•	•	•	•		
5	Generator	L3923	1	•	•	X	X	X	•	•		
6	Generator Pulley	T14191-1	1	X	•	X	X	X	•	•		
7	Generator Pulley Fan	M8529	1	X	•	X	X	X	•	•		
8	Lock Washer (Generator Pulley)	S9311-36 \emptyset	1	X	•	•	•	•	•	•		
9	Nut (Generator Pulley)	S9311-37	1	X	•	•	•	•	•	•		
10	Woodruff Key (Generator Pulley)	1/8 x 5/8	1	X	•	•	•	•	•	•		
11	Bracket	S10249	1	X	•	X	X	X	•	•		
12	Hex Head Screw (Generator to Bracket)	5/16-18 x 1	2	X	•	X	X	X	•	•		
13	Lock Washer (Generator to Bracket)	E106A-3	2	X	•	X	X	X	•	•		
14	Hex Nut (Generator to Bracket)	5/16-18	2	X	•	X	X	X	•	•		
15	Stud (Generator Bracket to Engine Block)	T9087	2	X	•	X	X	X	•	•		
16	Hex Nut (Generator Bracket to Engine Block)	3/8-16	2	X	•	X	X	X	•	•		
17	Adjusting Strap	S8533	1	X	•	X	X	X	•	•		
18	Hex Head Screw (Adjusting Strap to Engine)	3/8-16 x 1-1/2	1	X	•	X	X	X	•	•		
19	Lock Washer (Adjusting Strap to Engine)	E106A-4	1	X	•	X	X	X	•	•		
20	Spacer (Adjusting Strap to Generator)	S10731-3 \emptyset	1	X	•	X	X	X	•	•		
21	Hex Head Screw (Adjusting Strap to Generator)	5/16-18 x 7/8	1	X	•	X	X	X	•	•		
22	Lock Washer (Adjusting Strap to Generator)	E106A-3	1	X	•	X	X	X	•	•		
23	Plain Washer (Adjusting Strap to Generator)	S9262-30	1	X	•	X	X	X	•	•		
24	Plain Washer (Adjusting Strap to Generator)	S9262-4	1	X	•	X	X	X	•	•		

#

\emptyset This part is obsolete and no longer available.

Index of Sub Assemblies

Part Numbers

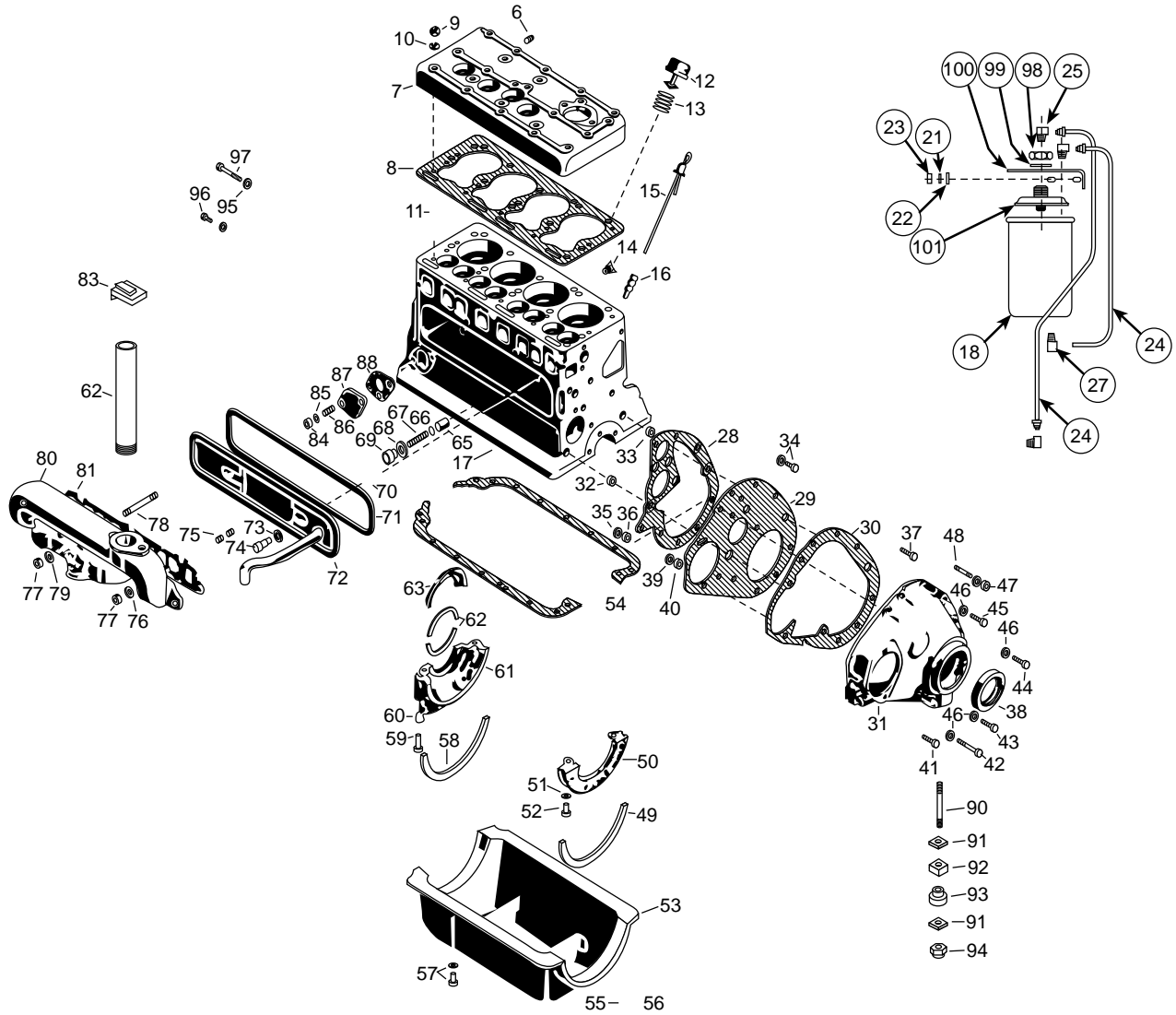
Index of Sub Assemblies
Sub Assembly Illustration
Index of Sub Assemblies
Sub Assembly Illustration
Index of Sub Assemblies
Sub Assembly Illustration
Index of Sub Assemblies
Sub Assembly Illustration

		Use only the parts marked "X" in the column under the heading number called for in the model index page.										
# Indicates a Change This Printing												
ITEM	DESCRIPTION	PART NO.	QTY.	1	2	3	4	5	6	7	8	9
	Ammeter Panel Assembly, Includes:	M7010 Ø	1	X	•	X	•	•	•	•		
	Ammeter Panel Assembly, Includes:	M7010-3 Ø	1	•	•	•	X	X	•	•		
	Ammeter Panel Assembly, Includes:	M12040	1	•	•	•	•	•	X	•		
26	Ammeter Panel Assembly, Includes:	M12506	1	•	•	•	•	•	•	X		
	Ammeter	S7514-4	1	X	•	X	X	X	X	X		
27	Ammeter Panel	M6955	1	X	•	X	X	X	X	X		
29	Starter Switch	S13145	1	X	•	X	•	•	•	•		
29	Starter Switch	S13146-1	1	•	•	•	X	X	X	X		
31	Battery	M6962-2	1	X	•	•	•	•	•	•		
31	Battery	M9399-1	1	X	•	X	X	X	X	X		
32	Battery Strap	S8069	1	X	•	•	•	•	•	•		
32	Battery Bracket	S12128	1	•	•	X	X	X	X	X		
33	Carriage Bolt and Nut (Battery Mounting)	1/4-20 x 8	2	X	•	•	•	•	•	•		
33	Carriage Bolt and Nut (Battery Mounting)	T11888	2	•	•	X	X	X	X	X		
34	Lockwasher (Battery Mounting)	E106A-2	2	X	•	X	X	X	X	X		
35	Ground Lead (+)	S8070	1	X	•	X	X	X	•	•		
35	Ground Lead (-)	S8070-28	1	•	•	•	•	•	X	•		
35	Ground Lead (-)	S14922	1	•	•	•	•	•	•	X		
36	Battery Lead (-)	S13147	1	X	•	X	X	X	•	•		
36	Battery Lead (+)	S13147-1	1	•	•	•	•	•	X	X		
37	Magneto	L2677 Ø	1	X	X	X	•	X	X	X		
37	Magneto (SAF-300 Only)	M10591 Ø	1	•	X	•	X	•	X	X		
38	Magneto Gasket	S9234	1	X	X	X	X	X	X	X		
39	Hex Head Cap Screw	3/8-16 x 1-1/2	1	X	X	X	•	X	X	X		
39	Hex Head Cap Screw (SAF-300 Only)	T9087	1	•	X	•	X	•	X	X		
40	Lockwasher	E106A-4	1	X	X	X	•	X	X	X		
40	Lockwasher (SAF-300 Only)	T9695-6	1	•	X	•	X	•	X	X		
41	Washer	S9262-2	1	X	X	X	X	X	X	X		
42	Switch - Ignition	S8020	1	X	X	X	X	X	•	•		
42	Switch - Ignition (Above Code 7200 Only)	T10616	1	•	X	•	•	•	•	X		
42	Switch - Ignition	S14090	1	•	•	•	•	•	X	•		
43	Plate - Switch	T9061	1	X	X	X	X	X	•	•		
43	Plate - Switch (Above Code 7200 Only)	T10589	1	•	X	•	•	•	•	X		
43	Plate - Switch	T9061-1	1	•	•	•	•	•	X	•		
45	Nipple	T8627	4	X	X	X	X	X	X	X		
46	Ignition Wire #1 Cylinder	S7518-5	1	X	X	X	•	X	X	X		
46	Ignition Wire #1 Cylinder (SAF-300 Only)	S7518-7	1	•	•	•	X	•	X	X		
47	Ignition Wire #2 Cylinder	S7518-7	1	X	X	X	X	X	X	X		
48	Ignition Wire #3 Cylinder	S7518-14	1	X	X	X	•	X	X	X		
48	Ignition Wire #3 Cylinder (SAF-300 Only)	S7518-8	1	•	•	•	X	•	X	X		
49	Ignition Wire #4 Cylinder	S7518-11	1	X	X	X	•	X	X	X		
49	Ignition Wire #4 Cylinder (SAF-300 Only)	S7518-14	1	•	•	•	X	•	X	X		
50	Spark Plug	S8159	4	X	X	X	X	X	X	X		
51	Grommet	*	3	X	X	X	X	X	X	X		
52	Bracket (Wire Support)	*	2	X	X	X	X	X	X	X		
53	Bracket (Wire Support)	*	1	X	X	X	X	X	X	X		
60	Voltage Regulator	M11567	1	•	•	•	•	•	X	X		
	Alternator Assembly, Includes:	L4722-3 Ø	1	•	•	•	•	•	X	X		
62	Alternator	L4715 Ø	1	•	•	•	•	•	X	X		
63	Pulley	S16133-3 Ø	1	•	•	•	•	•	X	X		
64	Fan	S16133-4 Ø	1	•	•	•	•	•	X	X		
66	Mounting Bracket	S14426	1	•	•	•	•	•	X	X		
67	Stud - Mount Alternator Bracket and Ammeter Panel	T9087	2	•	•	•	•	•	X	X		
68	Adjusting Strap	M11566	1	•	•	•	•	•	X	X		
69	Alternator Fan Guard	M12067	1	•	•	•	•	•	X	X		
70	Caution Decal	S14108-1 Ø	1	•	•	•	•	•	X	X		
*	NOTE: Items 1 Through 36 and 60 Through 70 Used with Self Starter Only. These parts are not normally stocked by Lincoln. For fastest service on these parts, order from your area Continental parts distributor using the part description and engine nameplate date.											

#

Ø This part is obsolete and no longer available.

ENGINE BLOCK AND EXTERNAL PARTS



ITEM	DESCRIPTION	PART NO.	QTY.	1	2	3	4	5	6	7	8	9
				#	#	#						
6	Pipe Plug Temperature Gauge Hole in Cylinder Head	*	1									
7	Cylinder Head	*	1									
8	Cylinder Head Gasket	*	1									
9	Cylinder Head Nut	*	15									
10	Washer - Cylinder Head Nut	*	15									
11	Stud - Cylinder Head to Block	*	15									
12	Oil Filler Cap Assembly	*	1									
13	Oil Filler Tube	S8612-2	1									
14	Drain Cock	*	1									
15	Oil Gauge Rod	*	1									
16	Oil Rod Support	*	1									
17	Block	*	1									
18	Oil Filter	S12634-1 or -2	1	•	X	X						
18	Oil Filter (old Style)	See Note 1	1	X	•	•						
20	Stud - Oil Filter to Cylinder Head	*	2									
21	Lockwasher - Oil Filter to Cylinder Head	E106A-3	2	•	X	X						
22	Washer - Oil Filter to Cylinder Head	S9262-121	2	•	X	X						
23	Hex Nut - Oil Filter to Cylinder Head	5/16 - 18	2	•	X	X						

#

Index of Sub Assemblies

Part Numbers

Index of Sub Assemblies
 Sub Assembly Illustration
 Index of Sub Assemblies
 Sub Assembly Illustration
 Index of Sub Assemblies
 Sub Assembly Illustration
 Index of Sub Assemblies
 Sub Assembly Illustration
 Index of Sub Assemblies
 Sub Assembly Illustration

Use only the parts marked "X" in the column under the heading number called for in the model index page.

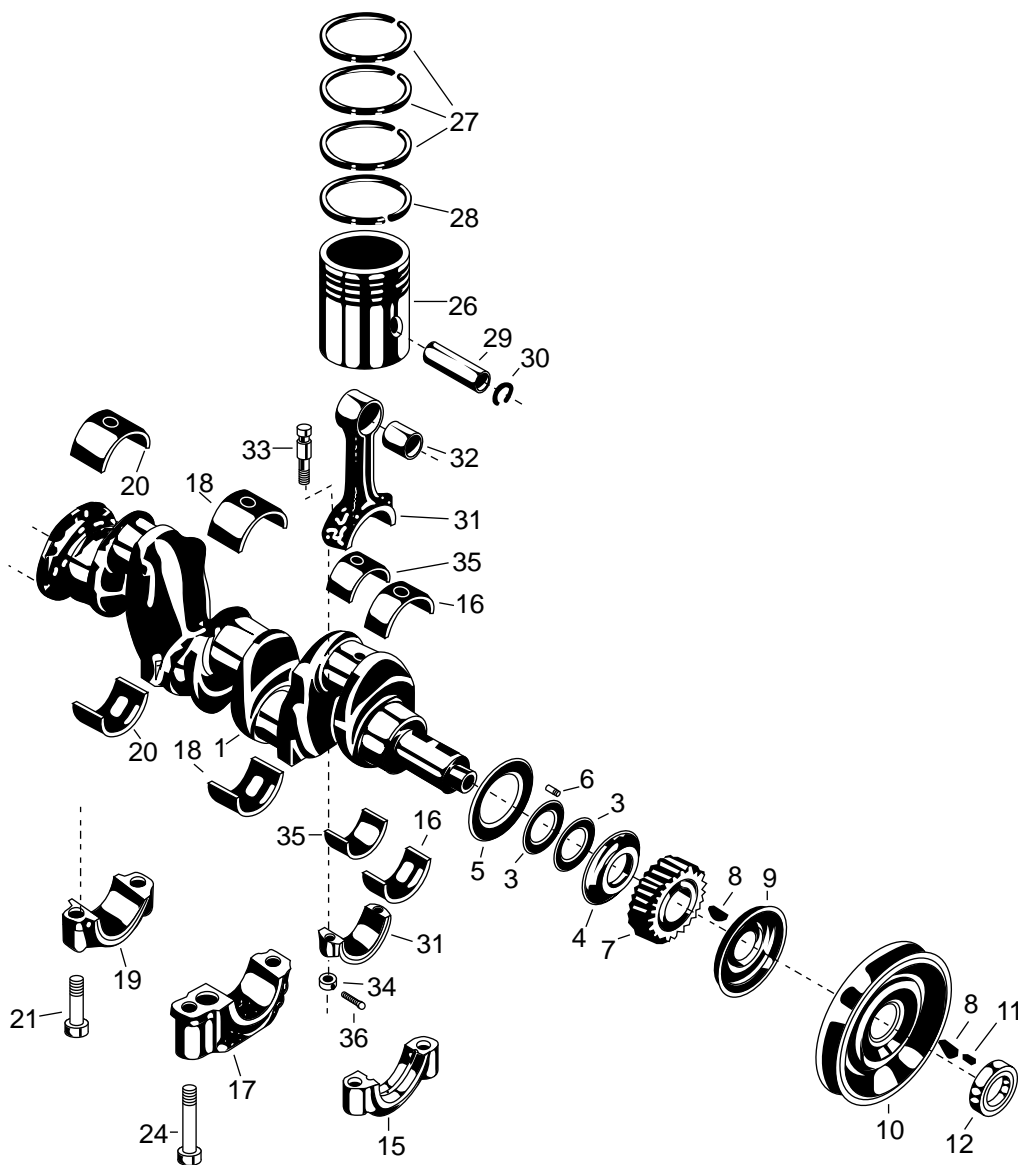
# Indicates a Change This Printing												
ITEM	DESCRIPTION	PART NO.	QTY.	1	2	3	4	5	6	7	8	9
24	Oil Line, Inlet	T12185-2	1	•	X	•						
	Oil Line, Inlet	T13452-1	1		•	X						
24	Oil Line, Outlet	T12186	1	•	X	•						
	Oil Line, Outlet	T13453	1		•	X						
25	Elbow, Oil Line	T9116	2 or 3	•	X	X						
27	Tee Fitting	T12184	1	•	X	X						
	Front End Plate Assembly Includes:	*	1									
28	Gasket - Front End Plage	*	1									
29	Front End Plate	*	1									
30	Gasket, Gear Cover	*	1									
31	Gear Cover	*	1									
32	Ring Dowel, Front Plate	*	1									
33	Ring Dowel, Gear Cover	*	1									
34	Screw and Lockwasher Assembly	*	1									
35	Nut - Gear Cover to End Plate	*	1									
36	Lockwasher - Gear Cover to End Plate	*	1									
37	Screw, Gear Cover to End Plate	*	1									
38	Oil Seal, Crankshaft	*	1									
39	Nut - Gear Cover Dowel Screw	*	1									
40	Lockwasher - Gear Cover Dowel Screw	*	1									
41	Gear Cover Dowel Screw	*	1									
42	Hex Head Screw - Gear Cover to Filler Block	*	1									
43	Hex Head Screw - Gear Cover to Filler Block	*	3									
44	Hex Head Screw - Gear Cover to Block	*	1									
45	Hex Head Screw - Gear Cover to Block (At Ring Dowel)	*	1									
46	Lockwasher - Gear Cover Mounting Screws	*	8									
47	Hex Nut - Gear Cover to Stud	*	2									
48	Stud - Gear Cover to Block (Upper Holes)	*	1									
49	Cork - Oil Pan to Front Filler Block	*	1									
50	Front Filler Block	*	1									
51	Lockwasher - Front Filler Block to Engine	*	2									
52	Hex Head Screw - Front Filler Block to Engine Block	*	2									
	Oil Pan Assembly Includes:	*	1									
53	Oil Pan	*	1									
54	Oil Pan Gasket (Not Included in Oil Pan Assembly)	*	1									
55	Gasket - Oil Pan Drain Plug	*	1									
56	Oil Pan Drain Plug	*	1									
57	Screw and Lockwasher Assembly - Oil Pan to Block	*	14									
58	Cork - Oil Pan to Rear Filler Block	*	1									
59	Hex Head Screw - Rear Filler Block to Engine Block	*	2									
60	Lockwasher - Rear Filler Block to Engine Block	*	2									
61	Rear Filler Block	*	1									
	Rear Bearing Oil Guard Assembly Includes:	*	1									
62	Seal - Rear Filler Block	*	2									
63	Rear Bearing Oil Guard	*	1									
64	Felt - Rear Bearing Oil Guard	*	1									
65	Oil Pressure Relief Valve	*	1									
66	Washer - Oil Pressure Relief Spring Adjusting	*	As Req'd									
67	Oil Pressure Relief Valve Spring	*	1									
68	Gasket - Oil Pressure Relief Valve	*	1									
69	Plug - Oil Pressure Relief Valve	*	1									
70	Stud - Valve Chamber Cover	*	2									
71	Gasket - Valve Chamber Cover	*	1									
72	Valve Chamber Cover	*	1									
73	Gasket - Valve Chamber Cover Nut	*	2									
74	Hex Nut - Valve Chamber Cover	*	2									
75	Stud - Manifold to Block	*	6									
76	Washer - Manifold to Block - End and Center Studs	*	3									
77	Hex Nut - Manifold to Block	*	7									

Index of Sub Assemblies
 Sub Assembly Illustration
 Index of Sub Assemblies
 Sub Assembly Illustration
 Index of Sub Assemblies
 Sub Assembly Illustration
 Index of Sub Assemblies
 Sub Assembly Illustration

		Use only the parts marked "X" in the column under the heading number called for in the model index page.										
# Indicates a Change This Printing												
ITEM	DESCRIPTION	PART NO.	QTY.	1	2	3	4	5	6	7	8	9
78	Stud - Manifold to Block (Center Hole)	*	1									
79	Washer - Manifold to Block	*	4									
80	Manifold	*	1									
81	Manifold Gasket	*	1									
82	Exhaust Pipe (Without Muffler)	T11176-1	1	X	X	X						
83	Rain Cap	S9563-2	1	X	X	X						
	Optional Muffler Kit, Includes:	K203	1	•	•	X						
	Muffler	M12620	1	•	•	X						
	Exhaust Pipe	T11176-5 ø	1	•	•	X						
	Pipe Nipple	S8612-8	1	•	•	X						
	Rain Cap	S9563-2	1	•	•	X						
84	Nut - Fuel Pump Hole in Block	*	2									
85	Lockwasher - Fuel Pump Hole in Block	*	2									
86	Stud - Fuel Pump Hole in Block	*	2									
87	Cover - Fuel Pump Hole in Block	*	1									
88	Gasket - Fuel Pump Hole in Block	*	1									
89	Oil Pressure Gauge	S8163	1	X	X	X						
90	Stud - Front Engine Mounting	T8911	1	X	X	X						
91	Washer - Front Engine Mounting	T9054	2	X	X	X						
92	Engine Mount - Front Engine Mounting	T8823	2	X	X	X						
93	Rubber Washer	T11135-1	1	X	X	X						
94	Huglock Nut Front Engine Mounting	T9187-3	1	X	X	X						
95	Lockwasher - Engine Rear End Plate to Engine	T9695-4	5	X	X	X						
96	Dowel Screw - Engine Rear End Plate to Engine	T8833-2	2	X	X	X						
97	Screw - Engine Rear End Plate to Engine	T8833-1	3	X	X	X						
98	Hex Jam Nut	3/4-16	1	•	X	X						
99	Lockwasher	T9695-12	1	•	X	X						
100	Filter Bracket	M10369	1	•	X	•						
100	Filter Bracket	M12375	1	•	•	X						
101	Filter Adapter (Base)	S12635	1	•	X	X						
102	Tee Adapter Used on Electric Start Only	T13555	1	•	•	X						
103	Oil Pressure Switch Above Code 7200	S14446	1	•	•	X						
*	These parts are not normally stocked by Lincoln. For fastest service on these parts, order from your area Continental parts distributor using the part description and <u>engine</u> nameplate data.											
Note 1	Filter cartridge models no longer stocked by Lincoln. To replace with lower cost expendable type oil filter, order Kit S12642.											

NOTES

CRANKSHAFT AND PISTON ASSEMBLY



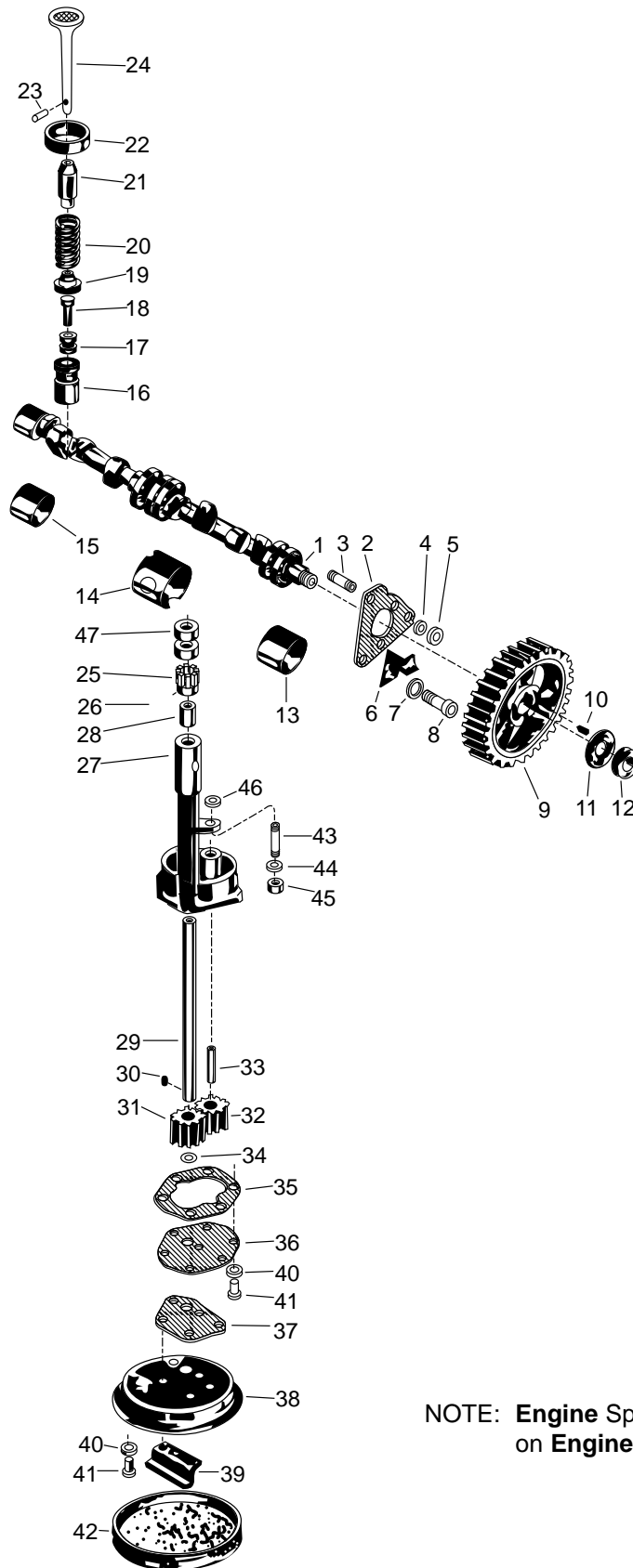
NOTE: **Engine Spec.** is located on **Engine Nameplate**

Index of Sub Assemblies
 Sub Assembly Illustration
 Index of Sub Assemblies
 Sub Assembly Illustration
 Index of Sub Assemblies
 Sub Assembly Illustration
 Index of Sub Assemblies
 Sub Assembly Illustration

Use only the parts marked "X" in the column under the heading number called for in the model index page.

# Indicates a Change This Printing												
ITEM	DESCRIPTION	PART NO.	QTY.	1	2	3	4	5	6	7	8	9
1	Crankshaft Assembly - Includes: Crankshaft	* *	1 1									# #
2	Crankshaft Thrust Shim (.002)	*	8									#
3	Crankshaft Thrust Shim (.008)	*	8									#
4	Crankshaft Thrust Plate	*	1									
5	Thrust Washer	*	2									
6	Pin-Crankshaft Thrust Washer to Crankcase	*	3									
7	Crankshaft Gear	*	1									#
8	Key - Crankshaft Gear to Crankshaft	*	1									
9	Oil Thrower	*	1									
10	Pulley	*	1									
11	Cork - Fan Drive Pulley Keyway Plug	*	1									
12	Spacer Collar - Crank Starting Jaw	*	1									
13	Starting Jaw	S9022	1	X	•							
13	Starting Jaw	S13280	1	•	X							
14	Crank	S7430	1	X	X							
15	Bearing Cap - Front Main	*	1									
16	Bearing Assembly - Front Main (One Assembly is 2 Halves)	*	1									#
17	Bearing Cap - Center Main	*	1									
18	Bearing Assembly - Center Main (One Assembly is 2 Halves)	*	1									#
19	Bearing Cap - Rear Main	*	1									
20	Bearing Assembly - Rear Main (One Assembly is 2 Halves)	*	1									#
21	Place Bolt - Front and Rear Main Bearing Cap Mounting	*	4									
24	Place Bolt - Center Main Bearing Cap Mounting	*	2									
26	Piston	*	4									#
27	Piston Ring - Taper Face (Top 3 Rings)	*	12									#
28	Piston Ring - Oil Control (Bottom Ring)	*	4									#
29	Piston Pin	*	4									#
30	Piston Pin Retaining Ring	*	8									#
31	Connecting Rod and Cap Assembly - (#1 and #3 Cyl) Includes:	*	2									#
	Connecting Rod and Cap Assembly - (All 4 Cyl) Includes:	*	4									#
	Rod and Cap	*	2									#
32	Piston Pin Bushing	*	2 or 4									#
33	Connecting Rod Bolt	*	4 or 8									#
34	Connecting Rod Bolt Nut	*	4 or 8									#
35	Connecting Rod Bearing - (One Bearing is One Half)	*	4									#
	Connecting Rod and Cap Assembly - #2 and #4 cyl) Includes:	*	2									#
31	Rod and Cap	*	2									#
32	Piston Pin Bushing	*	2									#
33	Connecting Rod Bolt	*	4									#
34	Connecting Rod Bolt Nut	*	4									#
35	Connecting Rod Bearing - (One Bearing is One Half)	*	4									#
36	Cotter Pin - Connecting Rod Bolts	*	8									#
* These parts are not normally stocked by Lincoln. For fastest service on these parts order from your area Continental parts distributor using the part description and engine nameplate data.												

CAMSHAFT AND VALVE ASSEMBLY



NOTE: **Engine** Spec. is located on **Engine** Nameplate

Index of Sub Assemblies

Part Numbers

Index of Sub Assemblies

Part Numbers

Index of Sub Assemblies

Part Numbers

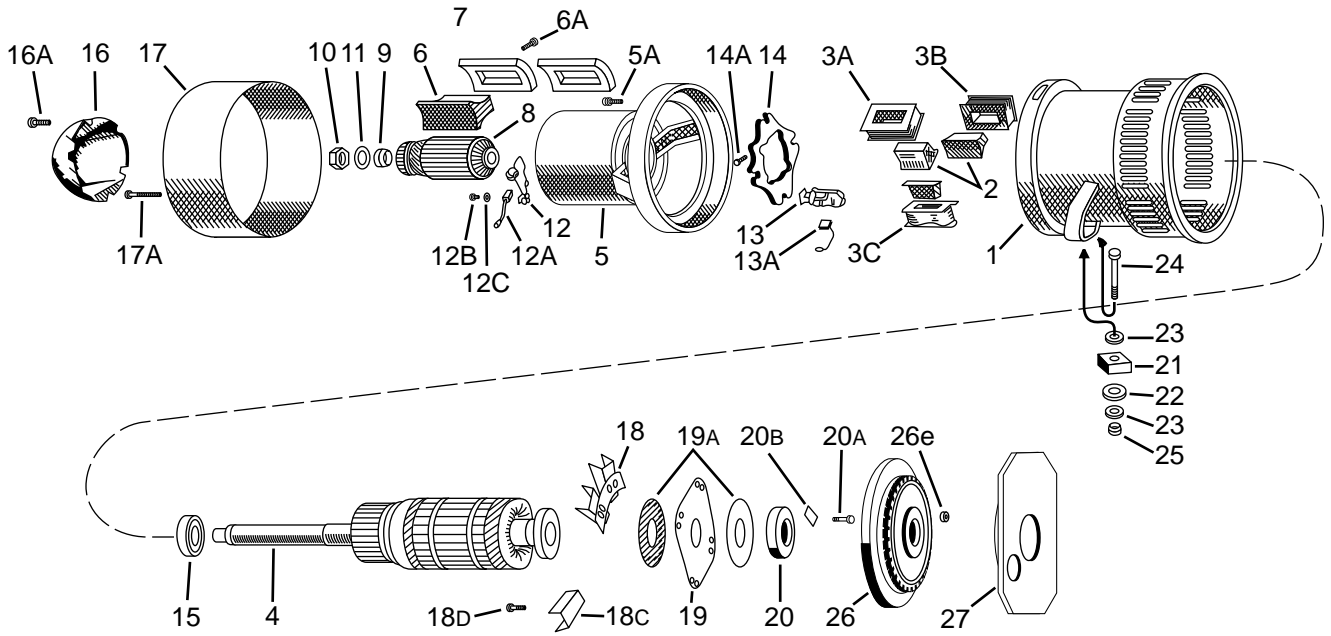
Index of Sub Assemblies

Part Numbers

Index of Sub Assemblies
 Sub Assembly Illustration
 Index of Sub Assemblies
 Sub Assembly Illustration
 Index of Sub Assemblies
 Sub Assembly Illustration
 Index of Sub Assemblies
 Sub Assembly Illustration
 Index of Sub Assemblies
 Sub Assembly Illustration

# Indicates a Change This Printing												
ITEM	DESCRIPTION	PART NO.	QTY.	1	2	3	4	5	6	7	8	9
1	Camshaft	*	1									
2	Camshaft Thrust Plate	*	2									
3	Stud - Camshaft Thrust Plate to Block	*	2									
4	Lockwasher - Camshaft Thrust Plate to Block	*	2									
5	Hex Nut - Camshaft Thrust Plate to Block	*	2									
6	Timing Gear Oiler Plate	*	1									
7	Lockwasher - Oiler Plate and Thrust Plate to Block	*	1									
8	Hex Head Bolt - Oiler Plate and Thrust Plate to Block	*	1									
9	Camshaft Gear	*	1									
10	Key - Camshaft Gear to Camshaft	*	1									
11	Washer - To Lock Nut on Camshaft	*	1									
12	Hex Nut - Camshaft Gear to Camshaft	*	1									
13	Bushing - Camshaft Front	*	1									
14	Bushing - Camshaft Center	*	1									
15	Bushing - Camshaft Rear	*	1									
	Valve Tappet Assembly - Includes:	*	8									
16	Valve Tappet	*	8									
17	Valve Tappet Locknut	*	8									
18	Valve Tappet Screw	*	8									
19	Valve Spring Seat	*	8									
20	Valve Spring	*	8									
21	Valve Stem Guide	*	8									
22	Exhaust Valve Seat Insert	*	4									
23	Valve Spring Lock	*	8									
24	Intake Valve	*	4									
24	Exhaust Valve	*	4									
	Oil Pump Assembly - Includes:	*	1									
25	Drive Gear - Oil Pump	*	1									
26	Pin - Oil Pump Drive Gear to Shaft	*	1									
27	Body Assembly - Includes:	*	1									
28	Bushing	*	1									
29	Shaft	*	1									
30	Key	*	1									
31	Gear - Oil Pump Driver	*	1									
32	Gear - Oil Pump Driver	*	1									
33	Stud - Oil Pump Idler Gear	*	1									
34	Snap Ring - Oil Pump Drive Shaft	*	1									
35	Gasket - Oil Pump Cover	*	1									
36	Cover - Oil Pump	*	1									
37	Gasket - Strainer Screen	*	1									
38	Strainer Frame	*	1									
39	Strainer Spacer	*	1									
41	Hex Head Screw and Lockwasher	*	6									
42	Oil Strainer Screen	*	1									
43	Stud - Oil Pump Body to Center Main Bearing Cap	*	1									
44	Lockwasher - Oil Pump Body to Center Main Bearing Cap	*	1									
45	Hex Nut - Oil Pump Body to Center Main Bearing Cap	*	1									
46	Washer - Oil Pump Spacer	*	1									
47	Oil Pump Drive Shaft Sleeve	*	1									
* These parts are not normally stocked by Lincoln. For fastest service on these parts, order from your area Continental parts distributor using the part description and engine nameplate data.												

WELDING GENERATOR AND COUPLING



Index of Sub Assemblies
 Part Numbers
 Index of Sub Assemblies
 Part Numbers
 Index of Sub Assemblies
 Part Numbers
 Index of Sub Assemblies
 Part Numbers

Index of Sub Assemblies
Sub Assembly Illustration
Index of Sub Assemblies
Sub Assembly Illustration
Index of Sub Assemblies
Sub Assembly Illustration
Index of Sub Assemblies
Sub Assembly Illustration

				Use only the parts marked "X" in the column under the heading number called for in the model index page.								
# Indicates a Change This Printing												
ITEM	DESCRIPTION	PART NO.	QTY.	1	2	3	4	5	6	7	8	9
1	Welder Frame	M8804	1	X	•	•	•	•	•	•		
1	Welder Frame	M8881 Ø	1	•	X	X	X	•	•	•		
1	Welder Frame (Below Code 7250)	M12099-1	1	•	•	•	•	X	•	•		
1	Welder Frame (Between Code 7250 & 9800)	L9074-2	1	•	•	•	•	X	•	•		
1	Welder Frame (Between Code 9800 & 9900)	L8714 Ø	1	•	•	•	•	•	•	X		
1	Welder Frame (Above Code 9900)	L8986	1	•	•	•	•	•	•	X		
2	Main Pole Lamination Assembly	S10745-6	4	X	X	X	X	•	•	X		
2	Main Pole Lamination Assembly	S10745-12	4	•	•	•	•	X	X	•		
3	Main Pole Shunt Field Coil	See Winding Specs	1	X	X	X	X	X	X	X		
3	Main Pole Series Field Coil	See Winding Specs	2	X	X	X	X	X	X	X		
	Interpole Coil and Pole (Set of 4), Includes:	S12261-2	1	X	X	X	X	•	•	•		
	Interpole Coil and Pole (Set of 2-3 & 6 O'Clock)	S12261-16 Ø	1	•	•	•	•	X	X	•		
	Interpole Coil and Pole (Set of 2-3 & 6 O'Clock)	S12261-24	1	•	•	•	•	•	•	X		
	Interpole Coil and Pole (Set of 2-9 & 12 O'Clock)	S18891	1	•	•	•	•	X	X	•		
	Interpole Coil and Pole (Set of 2-9 & 12 O'Clock)	S12261-23	1	•	•	•	•	•	•	X		
2	Interpole Pole Piece	S12260-2	4	X	X	X	X	•	•	X		
2	Interpole Pole Piece	S12260-6	4	•	•	•	•	X	X	•		
3	Interpole Coil (Set of 4)	S12261-2A	1	X	X	X	X	•	•	•		
3	Interpole Coil (Set of 2-3 & 6 O'Clock)	S12261-16A Ø	1	•	•	•	•	X	X	•		
3	Interpole Coil (Set of 2-3 & 6 O'Clock)	S12261-24A Ø	1	•	•	•	•	•	•	X		
3	Interpole Coil (Set of 2-8 & 12 O'Clock)	S12261-15A	1	•	•	•	•	X	X	•		
3	Interpole Coil (Set of 2-9 & 12 O'Clock)	S12261-23A	1	•	•	•	•	•	•	X		
4	Welder Armature	M7014-1 Ø	1	X	X	•	•	•	•	•		
4	Welder Armature	M12107 Ø	1	•	•	X	•	•	•	•		
4	Welder Armature Armature Coil Spec.	M7014-11 See Winding Specs	1	•	•	•	X	X	X	X		
5	Welder Bracket and Exciter Frame			X	X	X	X	•	•	X		
5	Welder Bracket and Exciter Frame, includes Baffle	M8797 M12101-1	1	X	X	X	X	•	•	X		
6	Hex Head Screw - Bracket to Welder Frame	T8833-2	4	X	X	X	X	X	X	X		
6	Exciter Main Pole Lamination Assembly	M8774-1	2	X	X	X	X	X	X	X		
7	Hex Head Screw - Exciter Main Pole Lamination Assembly to Exciter Frame	5/16-18 x 1-1/4	4	X	X	X	X	X	X	X		
7	Exciter Main Pole Field Coil	See Winding Specs	1	X	X	X	X	X	X	X		
8	Exciter Armature	M4047-1/24.26B	1	X	X	X	X	X	X	X		
9	Exciter Armature Sleeve Collar - For Centering Armature on Shaft	T5345	1	X	X	X	X	X	X	X		
10	Exciter Lock Nut	T6225-1	1	X	X	X	X	X	X	X		
11	Exciter Lock Nut Locking Washer	T7090-1	1	X	X	X	X	X	X	X		
12	Exciter Brushholder Assembly, Includes: (Below Code 7700)	S6531-A	2	X	X	X	X	X	X	X		
12	Exciter Brushholder Assembly, Includes: (Above Code 7700)	S15963-A	2	•	•	•	•	X	X	X		
12A	Exciter Brush (Below Code 7700)	See P-25-M T6968	2	X	X	X	X	X	•	•		
12A	Exciter Brush (Above Code 7700)	T7554	2	•	•	•	•	X	X	X		
12B	Screw - Brushholder to Frame	S9225-17	4	X	X	X	X	X	X	X		
12C	Washer - Brushholder to Frame	S9262-23	4	X	X	X	X	X	X	X		
13	Brushholder Assembly	M6964-2A	4	X	X	X	X	X	X	X		
	Brushholder Parts	See P-25-L										
13A	Brush	T2687	8	X	X	X	X	X	X	X		
14	Rocker	M1961	1	X	X	•	•	•	•	•		
14	Rocker	M9857	1	•	•	X	X	X	X	X		
14A	Hex Head Cap Screw	T8833-22	1	X	X	X	X	X	X	X		
15	Ball Bearing	M9300-19	1	X	X	•	•	•	•	•		
15	Ball Bearing	M9300-38	1	•	•	X	X	X	X	X		
	Bearing Shoulder Ring	S18541	1	•	•	•	•	•	X	X		
	Pipe Plug - Mounts in Bearing Housing	S10780-4	1	X	X	X	X	X	•	X		
	Lead Block - Mounts on Rear Ring of Welder Frame	S10783	1	X	X	X	X	X	X	X		
	Drive Screw - For Mounting Lead Block	S8025-7	2	X	X	X	X	X	X	X		
16	Exciter End Cover	L2594	1	X	X	X	X	X	X	X		
16	Exciter End Cover (Code 10072)	L6129-1	1	•	•	X	•	•	•	•		
16A	Screw - To Mount Exciter Cover	S9225-8	2	X	X	X	X	X	X	X		
17	Bracket Cover	L3391-1	1	X	X	X	X	•	•	X		

#

Ø This part is obsolete and no longer available.

Index of Sub Assemblies
 Sub Assembly Illustration
 Index of Sub Assemblies
 Sub Assembly Illustration
 Index of Sub Assemblies
 Sub Assembly Illustration
 Index of Sub Assemblies
 Sub Assembly Illustration
 Index of Sub Assemblies
 Sub Assembly Illustration

SA 200 F162 & F163				Use only the parts marked "X" in the column under the heading number called for in the model index page.									
# Indicates a Change This Printing													
ITEM	DESCRIPTION	PART NO.	QTY.	1	2	3	4	5	6	#	7	8	9
17	Bracket Cover	L3391-46	1	•	•	•	•	X	X	•			
	Round Head Bolt	1/4-20 x 1-3/4	2	X	X	X	X	X	X	X			
18	Square Nut	1/4-20	2	X	X	X	X	X	X	X			
18	Blower Segment (Sold in Set of 4 only)	M14361	1	X	X	•	X	X	X	X			
18C	Blower Paddle (Code 4744 & 4745)	S12008 Ø	8	•	•	X	•	•	•	•			
18C	Blower Paddle (Codes Above 5100)	S12480	8	•	•	X	•	•	•	•			
18D	Lock Screw	T11762-2	8	•	•	X	•	•	•	•			
19	Coupling Disc	M6730	1	X	X	•	X	X	X	X			
19A	Coupling Disc Backing Plate	S8042	2	X	X	•	X	X	X	X			
20	Coupling Ring (Engine Side)	S14232	1	X	X	•	X	X	X	X			
20	Coupling Ring (Armature Side)	S14233	1	X	X	•	X	X	X	X			
20A	Bolt - Disc to Hub	T8833-2	8	X	X	•	X	X	X	X			
20B	Bolt Locking Clip - Disc to Hub	T9049-A	4	X	X	•	X	X	X	X			
	Bolt - Disc to Flywheel	T8833-44	8	X	X	•	X	X	X	X			
	Lock Washer	E106A-8	8	X	X	X	X	X	X	X			
21	Welder Foot Upper Cushion	T8823	2	X	X	X	X	X	X	X			
22	Welder Foot Lower Cushion	T8822	2	X	X	X	X	X	X	X			
23	Washer	S9262-1	4	X	X	X	X	X	X	X			
24	Hex Head Bolt	1/2-13 x 3	2	X	X	X	X	X	X	X			
25	Huglock Nut	T9187-4	2	X	X	X	X	X	X	X			
26	Flywheel - Includes Ring Gear	M7671	1	X	X	•	X	•	•	•			
26	Flywheel - Includes Ring Gear	M7671-2	1	•	•	X	•	•	•	•			
26	Flywheel - Includes Ring Gear (Between Code 5550 & 7250)	M7671-4 Ø	1	•	•	•	X	X	•	•			
26	Flywheel - Includes Ring Gear (Between Code 7250 & 7600)	M14343-3	1	•	•	•	•	X	•	•			
26	Flywheel - Includes Ring Gear (Above Code 7600)	M14343-1	1	•	•	•	•	•	X	X			
26	Flywheel - Includes Ring Gear (Above Code 9900)	M14343-7	1	•	•	•	•	•	•	•	X		
26B	Nut - Flywheel to Crankshaft	T10018	6	X	X	X	X	X	X	X	•		
	Lock Washer - Flywheel to Crankshaft	T9695-5	6	X	X	X	X	X	X	X	X		
27	Engine Adapter Plate Assembly, Includes:	S9352-2	1	X	•	•	•	•	•	•			
	Engine Adapter Plate	L3389	1	X	•	•	•	•	•	•			
	Timing Pin	T10088	1	X	•	•	•	•	•	•			
27	Engine Adapter Plate Assembly, Includes: (Codes 3500-4800)	S9352-3	1	•	X	•	•	•	•	•			
	Engine Adapter Plate	L3456-A	1	•	X	•	•	•	•	•			
	Timing Pin	T10088	1	•	X	•	•	•	•	•			
27	Engine Adapter Plate Assembly, Includes: (Codes 4800-6000 except 5840 and 5841)	S9352-4	1	•	X	X	X	•	•	•			
	Engine Adapter Plate	L3456-B	1	•	X	X	X	•	•	•			
	Timing Pin	T10088	1	•	X	X	X	•	•	•			
27	Engine Adapter Plate Assembly, Includes: (Codes 5840, 5841, and 6000 to 7250)	S9352-6	1	•	•	•	X	X	•	•			
	Engine Adapter Plate	L3456-C Ø	1	•	•	•	X	X	•	•			
	Timing Pin	T10088	1	•	•	•	X	X	•	•			
27	Engine Adapter Plate (Code 7250 to 8900)	G1261-1C	1	•	•	•	•	X	•	•			
27	Engine Adapter Plate (Between Code 8900 & 9900)	G1261-1D Ø	1	•	•	•	•	•	X	X			
27	Engine Adapter Plate (Above Code 9900)	G2543	1	•	•	•	•	•	•	•	X		
	Dowel Ring (Above Code 7250)	T12598	2	•	•	•	•	X	X	X			
	Hex Head Cap Screw - Welder to Engine Adapter Plate	T8833-1	4	X	•	•	•	•	•	•			
	Lock Washer - Welder to Engine Adapter Plate	E106A-8	4	X	•	•	•	•	•	•			
	Hex Head Cap Screw - Welder to Engine Adapter Plate	3/8-16 x 1	As Req'd	•	X	X	X	X	X	X			
	Lock Washer - Welder to Engine Adapter Plate	E106A-4	As Req'd	•	X	X	X	X	X	X			

Ø This part is obsolete and no longer available.