

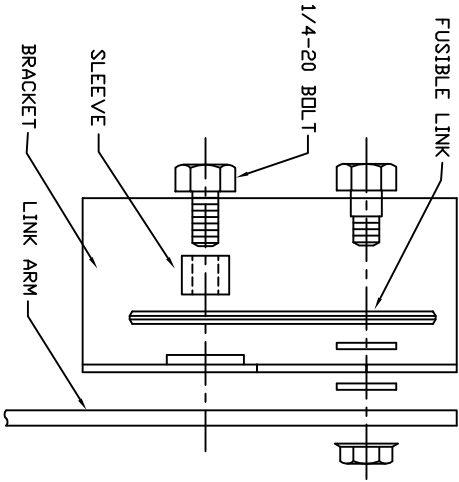
ASEMBLY INSTRUCTIONS-FUSIBLE LINK

In order to insure proper mounting of the fusible-link, please follow these instructions carefully.

NOTE:

- Some models require two (2) links
- In September, 1976, Graymills changed the link assembly in the Clean-D-Matic models 100, 300, 500, 800. The old style cover bracket is 'U' shaped. While the new cover bracket is 'L' shaped.
- Links should never be tightened down completely. There should always be some looseness. Special shoulder bolt or sleeve is provided to establish correct installation.

INSTALLATION/ALL HANDI-KLEEN & FLD-BAC MODELS
This is Fusible Link Kit #401-23700



FRONT VIEW

NOTES:

UNSPECIFIED TOLERANCES:

DECIMALS: .000 ± .005
.00 ± .02

FRACTIONS: ± .015 (1/64)

BEVELS AND CHAMFERS: ± 2°
ANGULARITY, SQUARENESS,
AND PARALLELISM:
± .015 INCHES PER FOOT

CONCENTRICITY:

T.I.R. EQUALS TOLERANCE
ON DIAMETER

DIMENSIONING SYSTEM:

ANSI/ASME Y14.5M

DO NOT SCALE DRAWINGS

INCH (MILLIMETER)

DEBURR ALL SHARP EDGES

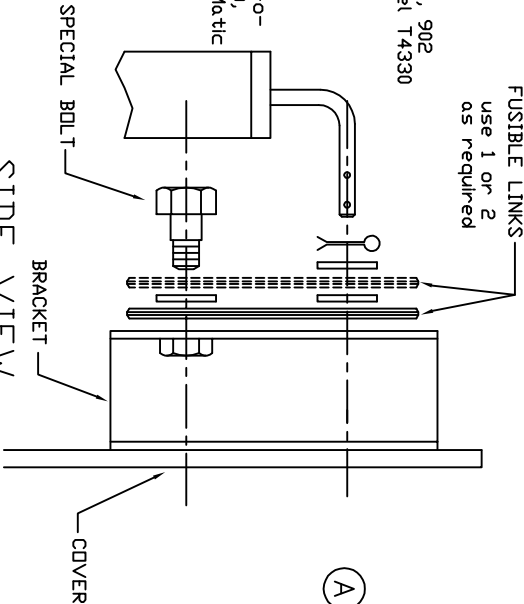
CAM FILE:

401-23710

INSTALLATION INSTRUCTIONS

FDR: Clean-D-Matic Models 900, 902
Turbo Clean-D-Matic Model T4330
Use: Fusible Link Kit
No. 401-23710 (contains 2
links. Both required).

FDR: Old style 'U' shaped
cover bracket on Clean-o-
Matic models 100, 300, 500,
800, and Turbo Clean-D-Matic
models T2621, T3821.
Use Fusible Link Kit
No. 401-23700. Use the
Special Bolt as illustrated
here.

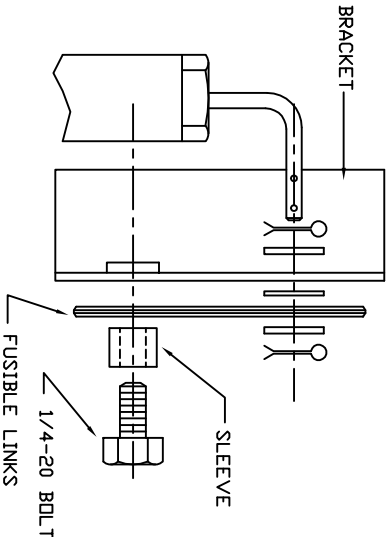


SIDE VIEW

INSTALLATION INSTRUCTIONS

FDR: Clean-D-Matic Models 100,
300, 500, 800 with new 'L'
shaped cover bracket.

Use: Fusible Link Kit
No. 401-23700



FRONT VIEW

A

RAW MATERIAL

QTY REQ'D
FINISH:

DRAWN BY CT DATE 2-27-96

CHECKED BY SCALE NONE

CAD FILE: J:\PURCPRT\795\23699.DWG

PAGE: 1 OF: 1

GRAYMILLS CORPORATION
CHICAGO, ILLINOIS 60613

PART NAME
LINK ASSEMBLY

NEXT ASSEMBLY

ENGINEERING FILE: ---

CUSTOMER: GRAYMILLS

DRAWING NUMBER
795-23699

795-23699

PAGE: 1 OF: 1

REVISIONS