

[Home Page](#) / [Grove RT-60S Rough Terrain Crane](#)[Search for other Cranes - Mobile items](#)

## Grove RT-60S Rough Terrain Crane

**ITEM#** 593650**LOCATION** East Moline, Illinois, United States, 61244**(159 - photos)****SOLD ON****6/25/15****WINNING BID****US \$9,500****# OF BIDS****8** [View Bid History](#)**SOLD!****ITEM DETAILS**

**METER READING****3,208 Hours****SERIAL #****236XX**

**18 Ton Capacity, 28' Minimum Boom Length, 75' Maximum Boom Length, Johnson Brand, 20 Ton Load Block, Cummins Engine, 3-Way Steering**



Inspected by IronPlanet.

Your purchase is protected by our **IronClad Assurance**.

## Recommendations For You **search all**



**1979 Grove RT58B Rough Terrain Crane**

Kentucky 374 mi away

**US \$6,500**

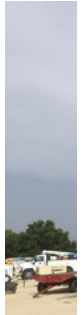
**1989 Link-Belt HSP-8018 Rough Terrain Crane**

Georgia 611 mi away

**US \$10,000**

**1998 Terex RT230 Rough Terrain Crane**

New York 730 mi away

**US \$46,000**

**2001 Terex RT230 Rough Terrain Crane**

Texas 1000 mi away

**US \$10,000**

## Previously Viewed



**Lot of (2) Skyjack SJ7027 4WD Diesel Scissor Lifts**

Illinois 12 mi away

**US \$500**

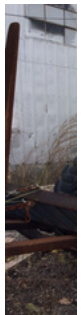
**Grove RT60S Rough Terrain Crane**

Indiana 163 mi away

**US \$6,000**

**Gradall G3WD Highway Wheeled Excavator**

Illinois 12 mi away

**US \$500**

**Lot of (2) Hyster H5000 Forklifts**

Illinois 1000 mi away

**US \$10,000**
[Inspection Report](#)
[Important Information](#)

# Inspection Report

*Please Note that as the buyer, you are responsible for reviewing the entire inspection report when evaluating an item.*

 **Protected by IronClad Assurance®**

## General Appearance

DESCRIPTION	RATING	DETAILS
Safety Certification Label		There is a safety certification label with a date of 3/4/2015
Safety Certification Report		Safety Certification Report Not Available
Load Chart		Yes
Paint		
Sheet Metal (fiberglass) Condition		
Steps/Ladders		
Hand Rails		
<b>(36)</b>		

## Safety

DESCRIPTION	RATING	DETAILS
Travel Alarm		Inoperable
Horn		Inoperable
Seat Belts		Operational

## Control Station Crane

DESCRIPTION	RATING	DETAILS
Glass		

## Seats/Armrests

## Hydraulic Controls

## Drivetrain Controls

Oil Pressure	50 PSI
--------------	--------

Exterior Lights	Operational
-----------------	-------------

Gauges	Operational
--------	-------------

Hour Meter/Odometer	3,208 Hours; Operational hour meter - IronPlanet makes no guarantees as to actual hours/miles; we can only report what can be visually observed.
---------------------	--------------------------------------------------------------------------------------------------------------------------------------------------

Current Safety Manual	No
-----------------------	----

Current Operator/Maintenance Manual	No
-------------------------------------	----

Limited Function Check	The main components operated except as noted.
------------------------	-----------------------------------------------

**(15)**

## Engine

DESCRIPTION	RATING	DETAILS
Blow by @ idle (subjective observation)		Visible
Starter		Operational
Fuel System		Operational
Exhaust System		Exhaust leakage heard
Radiator		
Oil Leaks		Dripping Leak: Side of engine. Dripping Leak: Rear of engine.
Fuel Leaks		None seen
Cooling System Leaks		None seen
Limited Function Check (Engine)		The engine started and ran with smoke that mostly cleared.

**(8)**

## Drivetrain

Operational test is limited to low speed in a confined flat area without load. Differential interlocks, full transmission shifting and functionality of all drive axles cannot be fully verified. Inspector listens for abnormal noises, observes leaks and notes physical damage.

DESCRIPTION	RATING	DETAILS
Transmission		Operational; Dripping leak
Front Drive Axle		Dripping Leak
Front Axle Oscillating Pin		
Rear Drive Axle		Dripping leak
Final Drives		
Limited Function Check		The drivetrain was operational.

**(11)**

## Hydraulics

DESCRIPTION	RATING	DETAILS
Pumps (Hydraulics)		
Hydraulic Motors		
Valves		Dripping leak
Hydraulic Tank		
Hoses (Hydraulic)		Leaks
Swing Motor		
Main Hoist		
Lift Cylinders		
Telescopic Boom Cylinders		
Cylinder Pins and Bushings		
Limited Function Check		The hydraulic system was operational.

**(21)**

## Chassis

IronPlanet pin connection pivot point wear inspections are limited to sound, sight and feel observations. Dial indicator testing is not performed.

DESCRIPTION	RATING	DETAILS
Steering Linkage		
Outrigger Cylinders		
Steering Wheel Play		
Brake Type		Air
Master Cylinder/Brake Control		
Brake Lines/Hoses		
Park Brake		Weak
Limited Function Check		The service brakes performed. The park brake would not hold the machine.
Turn-Table Bearing		
Frame Condition		
Tire Size		16.00-24 all tires Front tires; Mixed brands, not readable
Tire Condition		
Wheel Condition		
Wheel Studs		
Limited Function Check		The main chassis components were operational in a limited check.
Outrigger Condition		
Outrigger Beams		
Outrigger Floats/Pads Condition		
Main Boom Pins		

## Main Boom Sections

## Sheaves

## Boom Head Section

## Wear Pads

## Limited Function Check

The main crane components functioned with wear and damage.

**(57)**

## Specialty

## DESCRIPTION

## RATING

## DETAILS

Main Load Block

Johnson brand load block; Model: J20D12RTB; 20 ton capacity load block

## Counterweights

**(7)**

## Oil Sample Analysis

## ENGINE

## TRANSMISSION

date of analysis

Jun 19, 2015

Jun 19, 2015

Lead

1.01 PPM

0 PPM

Chromium

1.13 PPM

2.15 PPM

Copper

11.67 PPM

6.99 PPM

Silver

0 PPM

0 PPM

Nickel

0.16 PPM

0 PPM

Tin

0.06 PPM

0 PPM

Aluminum

1.91 PPM

5.38 PPM

Silicon

1.05 PPM

10.35 PPM

Iron

3.38 PPM

10.52 PPM

Glycol

NEG

N/A



Water	NEG	N/A
Fuel	<5%	N/A

**Disputes:**

This item is offered with IronClad Assurance® protection. With IronClad Assurance®, if a buyer discovers that the item is not substantially in the condition as represented in this inspection report, the buyer may submit a written dispute claim to IronPlanet. Following submission of a written dispute claim, IronPlanet will investigate the claim, re-inspecting the equipment item as necessary, and determine a fair and mutually beneficial resolution. Please note that IronPlanet inspections are performed solely for the purpose of reporting the visible condition of the equipment's major systems and attachments on the day of the inspection and do not include load testing or digging/lifting. These inspections are not designed nor intended to detect latent defects, or conditions that could only be found in connection with the physical dismantling of the equipment or the use of diagnostic tools or techniques. This inspection report includes ratings, comments, and photos of the various components of the item. Knowledgeable buyers are expected to carefully review all of the available information in the inspection report, including all photographs, in order to make the best bidding and buying decision possible.

1-888-433-5426

[Contact Us](#)[FAQs](#)[Privacy](#)[Terms & Conditions](#)[About Us](#)[Management team](#)[Board of directors](#)[Investors](#)[News](#)[Careers](#)Language: **English** ▼Site: **North America** ▼**Download Our Mobile App**

Copyright © 1999-2015 IronPlanet, Inc. All Rights Reserved. IronPlanet®, Asset Appraisal Services<sup>SM</sup>, TruckPlanet®, allEquip<sup>SM</sup>, GovPlanet®, Kruse Energy<sup>SM</sup>, IronClad Assurance® and Auctions you can trust® are service marks of IronPlanet, Inc. All other marks and brands are the property of their respective owners.