

# TROUBLESHOOT CHECK LIST

02-15-96

**LOCKING OPERATING PROBLEMS:**

ALL CABINETS ARE STANDARD WITH THE SAFETYLINK™ LOCKING MECHANISM. THIS FEATURE PREVENTS CABINET TIPPING BY LOCKING ALL DRAWERS WHEN ONE DRAWER IS PULLED OUT.

NOTE: THIS FEATURE CAN HOWEVER, BE BI-PASSED BY OPENING TWO OR MORE DRAWERS SIMULTANEOUSLY. IF THE OPENED DRAWERS ARE ALL NOT CLOSED SIMULTANEOUSLY, LOCK MECHANISM DAMAGE WILL OCCUR IF OPENED DRAWERS ARE FORCED CLOSED. 90% OF ALL LOCK MECHANISM PROBLEMS ARE CAUSED BY THIS CONDITION. THE RESULT IS A BENT LOCK ANGLE ASSEMBLY.

Old style

FIND YOUR PROBLEM HERE	POSSIBLE CAUSE	HOW TO FIX
DRAWERS DO NOT OPEN (or) DRAWER(S) DO NOT CLOSE COMPLETELY	LOCK CYLINDER IN LOCKED POSITION	UNLOCK WITH KEY
	BENT LOCK ANGLE ASSEMBLY	STRAIGHTEN or REPLACE LOCK ANGLE ASSEMBLY (REFER TO REPAIR NO. 4)
	TORSION SPRING NOT FUNCTIONING PROPERLY	REPLACE WITH NEW SPRING (REFER TO REPAIR NO. 4)
	TORSION SPRING LOOSE	RE-ASSEMBLE TORSION SPRING (REFER TO REPAIR NO. 4)
	DRAWER LOCK CLIP BENT	RE-ADJUST REAR LOCK CLIP OF DRAWER
	NYLON THRUST BEARING WORN	REPLACE WITH NEW BEARING (REFER TO REPAIR NO. 4)
CABINET DOES NOT LOCK OR UNLOCK	LOCK CYLINDER TUMBLERS WORN	REPLACE LOCK CYLINDER (REFER TO REPAIR NO. 3)
	PRODUCT STORED IN CABINET HAS LODGED ITSELF AROUND LOCK ANGLE ASSEMBLY	REMOVE MATERIAL (REFER TO REPAIR NO. 5)
EXCESSIVE FORCE REQUIRED TO OPERATE DRAWERS	DRAWER OVERLOADED	REMOVE WEIGHT (MAXIMUM CAPACITY IS 400lbs - EQUALLY DISTRIBUTED)
	DRAWER BOTTOM PAN DISTORTED	SCREW PARTITION TO DRAWER BODY FOR ADDITIONAL SUPPORT
	DRAWER RAILS WORN AND DISTORTED	REPLACE DRAWER
	CARRIER BEARINGS LOOSE OR MISSING	REPLACE CARRIER
	GUIDE RAILS WORN AND DISTORTED	REPLACE GUIDES (REFER TO REPAIR NO. 8)
DRAWERS RUBBING ON THE SIDES OF THE CABINET OR AGAINST EACH OTHER	DRAWER GAPS NOT SET PROPERLY	ADJUST DRAWER GAPS (REFER TO REPAIR NO. 8)

Old style

PROCEDURE TO REMOVE LOCK ANGLE ASSEMBLY FROM CABINET

(REFER TO DRAWING LES-04A)

- 1) REMOVE ALL DRAWERS AND CARRIER ASSEMBLIES FROM THE CABINET. BE SURE TO MARK THE DRAWERS AND THEIR LOCATIONS AND KEEP EACH DRAWER AND CARRIER ASSEMBLY TOGETHER SO THEY GO BACK INTO THE SAME LOCATIONS. THIS IS TO AVOID ANY RE-ADJUSTMENT PROCEDURES WHEN REPLACING THE DRAWERS LATER.
- 2) REMOVE THE LOCK ANGLE RETAINER FROM THE UPPER ROD OF THE LOCK ANGLE ASSEMBLY WITH A PAIR OF PLIERS.
- 3) LIFT UP ON LOCK ANGLE ASSEMBLY TO ALLOW ITS LOWER PIVOT ROD TO CLEAR THE BOTTOM LOCK BRACKET OF THE CABINET. DISENGAGE LEG OF TORSION SPRING FROM BOTTOM LOCK BRACKET AND PIVOT LOWER LOCK ANGLE ASSEMBLY FORWARD AND REMOVE FROM CABINET.
- 4) REMOVE THE NYLON THRUST BEARING AND THE TORSION SPRING FROM THE LOCK ANGLE ASSEMBLY.

PROCEDURE TO RE-ASSEMBLE LOCK ANGLE ASSEMBLY INTO CABINET

(REFER TO DRAWING LES-04A)

BEFORE STARTING, NOTE THAT THERE IS A TOP AND BOTTOM TO THE LOCK ANGLE ASSEMBLY. THE BOTTOM IS IDENTIFIED BY A GROOVE CUT INTO THE SHORT PIVOT ROD.

- 1) INSERT THE TOP LONG ROD OF THE LOCK ANGLE ASSEMBLY INTO THE HOLE OF THE TOP LOCK HOUSING AND THE TOP SHORT ROD INTO THE SQUARE CUTOUT OF THE TOP LOCK HOUSING AND THROUGH THE CUTOUT IN THE BOTTOM OF THE LOCK SLIDE ASSEMBLY.
- 2) INSERT THE NYLON THRUST BEARING OVER THE BOTTOM LONG ROD OF THE LOCK ANGLE ASSEMBLY WITH THE RELEIVED PORTION TOWARD THE FLAT SIDE OF THE LOCK BAR ANGLE. INSERT THE END OF THIS PIVOT ROD INTO THE HOLE IN THE BOTTOM LOCK BRACKET.
- 3) INSTALL THE TORSION SPRING WITH THE 1 1/2 COIL END OVER THE BOTTOM SHORT ROD OF THE LOCK ANGLE ASSEMBLY AND SEAT INTO ROD GROOVES. INSERT THE FORMED END OF THE TORSION SPRING INTO THE SMALL HOLE OF THE BOTTOM LOCK BRACKET. THE LOCK ANGLE ASSEMBLY WILL HAVE TO BE RAISED TO ACCOMPLISH THIS INSERTION. MAKE SURE THE NYLON THRUST BEARING IS REPOSITIONED PROPERLY.
- 4) CHECK THE LOCK MECHANISM AT THIS TIME TO MAKE SURE THAT THE KEY WILL OPERATE AND TURN THE LOCK ANGLE ASSEMBLY INTO THE LOCKED AND UNLOCKED POSITIONS. THE KEY SHOULD TURN EASILY AND MOVE THE LOCK ANGLE ASSEMBLY FREELY. IF THE MECHANISM WORKS CORRECTLY ATTACH THE LOCK ANGLE RETAINER OVER THE UPPER LONG ROD OF THE LOCK ANGLE ASSEMBLY AND CRIMP CLOSED.
- 5) REPLACE ALL DRAWERS AND CARRIER ASSEMBLIES AND MAKE SURE THEY GO BACK IN THEIR ORIGINAL LOCATIONS.

SYCAMORE SYSTEMS INC  
division of  
LYON METAL PRODUCTS

REPAIR NO. 4 FEB 09, 1996

ce

FIELD INSTRUCTION TO FREE A JAMMED LOCK ANGLE WHEN:

- A) KEY WILL TURN IN LOCK 180° BUT DRAWERS CANNOT BE OPENED.
- B) KEY WILL NOT TURN 180° AND DRAWERS CANNOT BE OPENED.

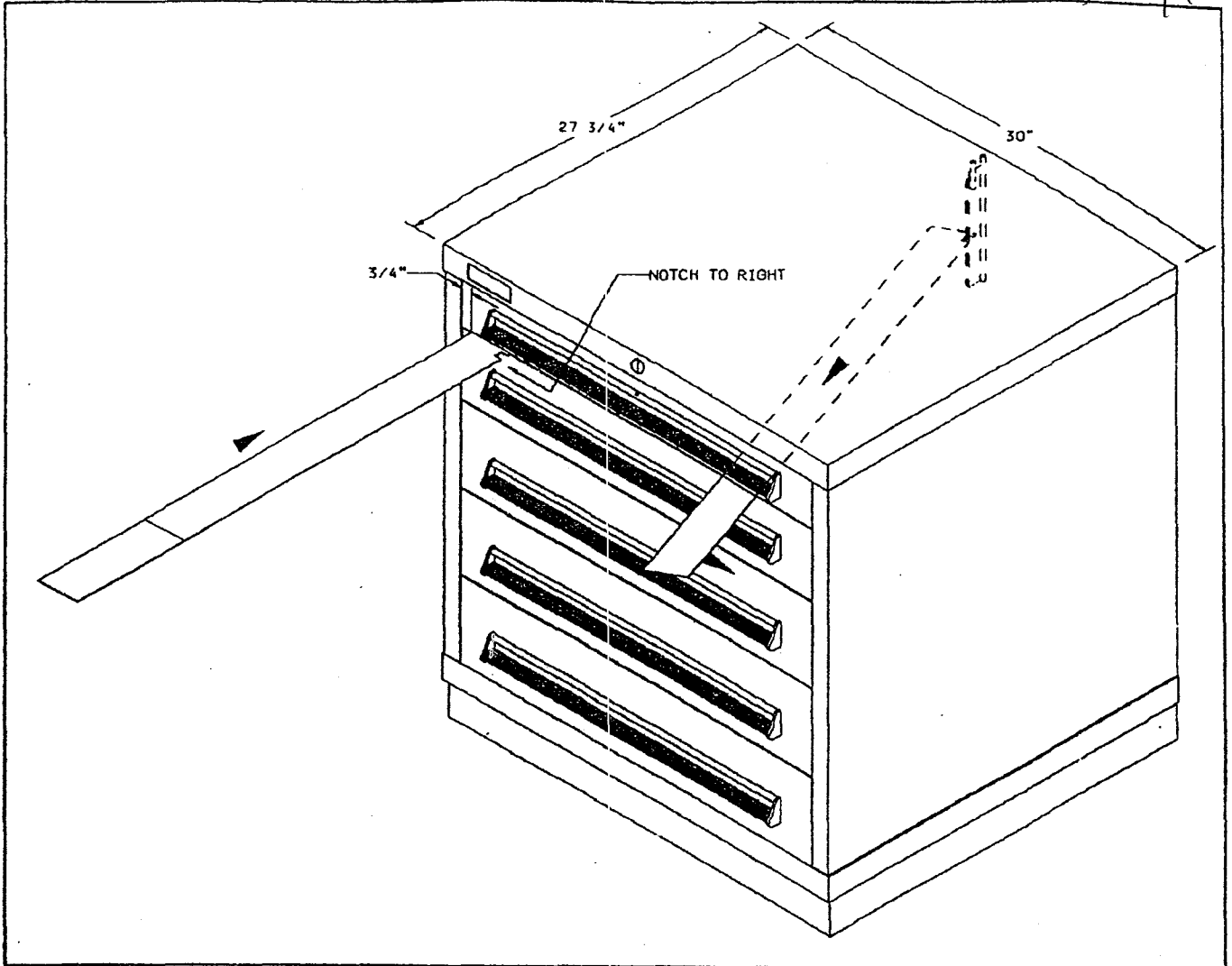
BEFORE STARTING. MAKE SURE THAT THE NUMBER ON THE LOCK KEY AND ON THE FACE OF THE LOCK MATCH. ALSO TRY TIPPING THE CABINET FROM THE SIDE SLIGHTLY (approx 1/2" to 1" off the floor) AND LETTING IT DROP. TRY THIS A FEW TIMES TO HELP DISLodge THE LOCK ANGLE OR FREE MATERIAL THAT COULD HAVE FALLEN OUT OF A DRAWER AND JAMMED THE LOCK ANGLE. TRY THE KEY AGAIN. IF IT STILL DOES NOT UNLOCK THE DRAWERS. GO TO STEP 1.

- 1) FABRICATE A STEEL BAND AND MARK PER DIMENSIONS SHOWN ON DRAWING "REPAIR NO. 6".
- 2) INSERT THE BAND AT THE LEFT HAND SIDE OF THE DRAWER. WITH THE NOTCH ON THE RIGHT. BETWEEN TWO ADJACENT SHORT HEIGHT DRAWER FRONTS AS SHOWN. (THIS WILL ALLOW THE BAND TO BE SUPPORTED BY THE DRAWER BODY BELOW WHEN PUSHING THE BAND TOWARD THE REAR OF THE CABINET).
- 3) SLIDE THE BAND STRAIGHT INTO THE CABINET LETTING IT REST ON THE SIDE OF THE DRAWER BODY UNTIL IT HITS THE BACK OF THE CABINET. (THE DRAWER FRONT SHOULD BE CLOSE TO THE 27 3/4" MARK MADE ON THE BAND).
- 4) MOVE THE BAND TO THE RIGHT TOWARDS THE CENTER OF THE CABINET, KEEPING THE BAND AGAINST THE CABINET BACK UNTIL IT STOPS AGAINST THE CABINET BACK CENTER SEAM. WHEN THE BAND HITS THE SEAM, PULL IT FORWARD SLIGHTLY (1/2" to 3/4") TO CLEAR THE SEAM. THEN CONTINUE TO MOVE THE BAND TOWARDS THE RIGHT UNTIL YOU HIT THE LOCK ANGLE.
- 5) WITH THE BAND AGAINST THE LOCK ANGLE. MOVE THE FRONT END OF THE BAND TO THE RIGHT KEEPING THE OPPOSITE END AGAINST THE LOCK ANGLE. HOOK THE NOTCH IN THE BAND ONTO THE EDGE OF THE LOCK ANGLE. (THE BAND MAY HAVE TO BE MOVED BACK AND FORTH TO ENGAGE THE NOTCH).
- 6) IF THE KEY IS UNLOCKED AND THE BAND IS HOOKED INTO THE LOCK ANGLE. PULL THE BAND TO THE RIGHT AND FORWARD. THIS SHOULD FREE THE LOCK ANGLE. IF IT DOES NOT, THE LOCK ANGLE MAY BE JAMMED BY SOMETHING THAT HAS FALLEN OUT OF A DRAWER. FIND SOME ADDITIONAL HELP AND HAVE THAT PERSON TIP AND DROP THE CABINET WHILE YOU ARE PULLING ON THE BAND.
- 7) IF ALL FAILS, WE RECOMMEND CUTTING OPEN THE BACK OF THE CABINET AS SHOWN ON DRAWING "REPAIR NO. 7". DRILL A HOLE LARGE ENOUGH TO ALLOW CUTTING WITH A PAIR OF TIN SNIPS OR ELECTRIC HAND-HELD METAL SHEARS. REACH IN AND REMOVE THE MATERIAL THAT HAS JAMMED THE LOCK ANGLE AND MOVE THE LOCK ANGLE TO THE OPEN POSITION. IF NECESSARY, REFER TO DRAWING LES-04A AND "REPAIR NO. 3 and 4" TO HELP TROUBLESHOOT THE LOCKING MECHANISM.

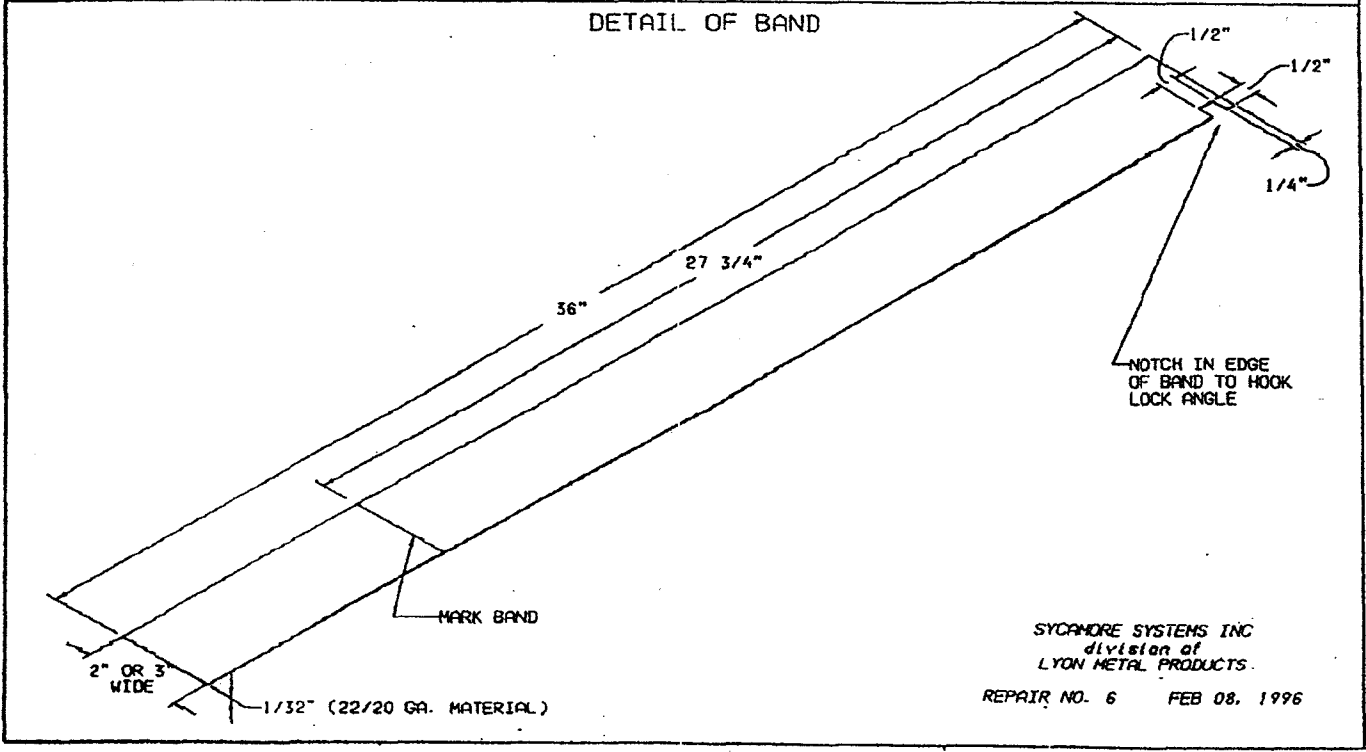
IF YOU HAD TO OPEN THE BACK OF THE CABINET TO CORRECT THE PROBLEM, YOU NOW HAVE A FEW OPTIONS:

- A) IF SECURITY IS NOT A CONCERN, CONTINUE USING THE CABINET AS IS.
- B) RIVET OR WELD A SHEET METAL PLATE TO THE CABINET BACK TO COVER THE HOLE.
- C) ORDER A NEW CABINET HOUSING.

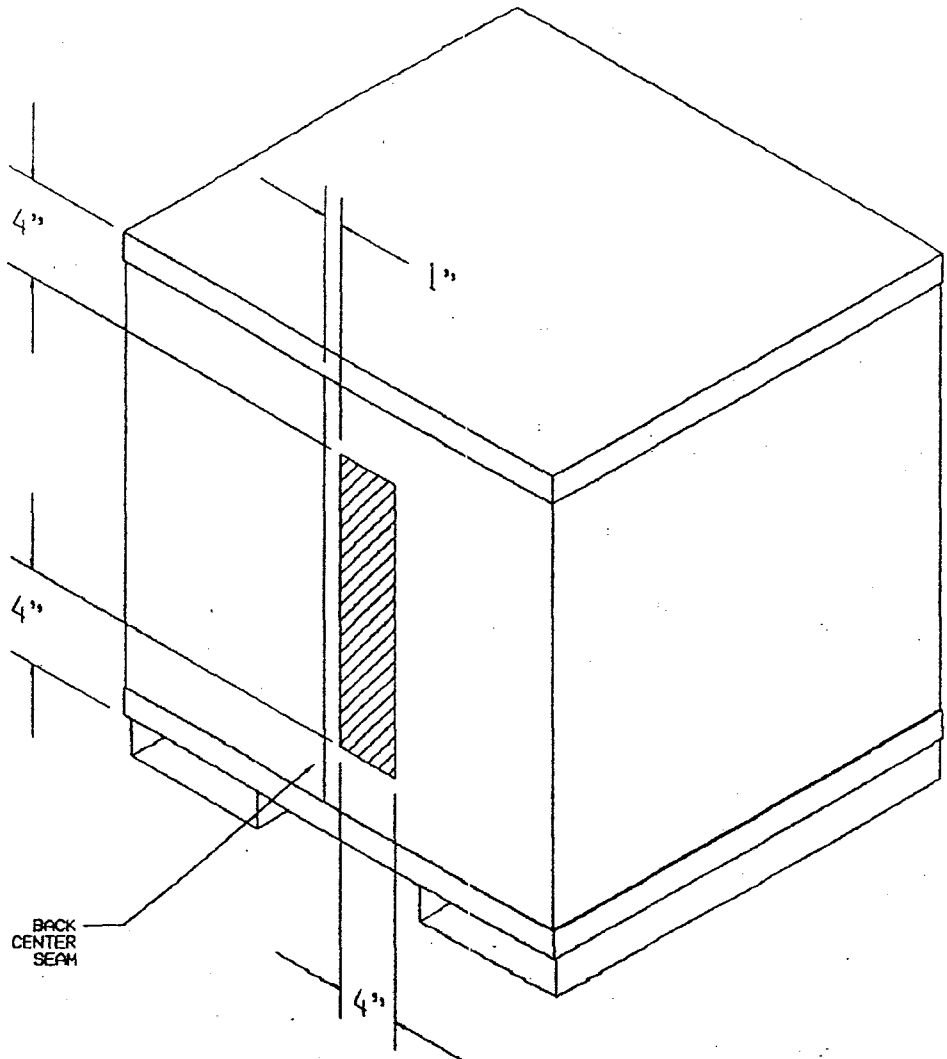
Old style



DETAIL OF BAND



SYCAMORE SYSTEMS INC  
division of  
LYON METAL PRODUCTS  
REPAIR NO. 6 FEB 08, 1996



BACK  
CENTER  
SEAM

END OF LOCK  
ROD CRANK TO  
ENGAGE SLOT

LOCK SLIDE ASSEMBLY

HOLE FOR LOCK ROD CRANK

LOCKING ROD CRANK

LOCK ROD CONNECTOR

WASHER

1/4" JAMB NUT

3/32"x1"  
COTTER PIN

LOCK HEX NUT  
(FURNISHED  
W/LOCK  
ASSEMBLY)

LOCK ASSEMBLY

LOCK ANGLE ASSEMBLY

SPRING GROOVE IN BOTTOM ROD

TORSION SPRING

BOTTOM LOCK BRACKET

TOP LOCK HOUSING

SQUARE CUTOUT FOR SHORT  
PIVOT ROD OF LOCK  
ANGLE ASSEMBLY

HOLE FOR LONG PIVOT  
ROD OF LOCK ANGLE  
ASSEMBLY

LOCK  
ANGLE  
RETAINER

DRAWER  
ALIGNMENT  
ANGLE

HOLE FOR  
LONG PIVOT  
ROD OF  
LOCK ANGLE  
ASSEMBLY

THRUST  
BEARING

HOLE FOR  
TORSION  
SPRING LEG

Post-it<sup>®</sup> Fax Note

7671

Date

# of  
pages

To

Co./Dept.

Phone #

Fax #

From

Co.

Phone #

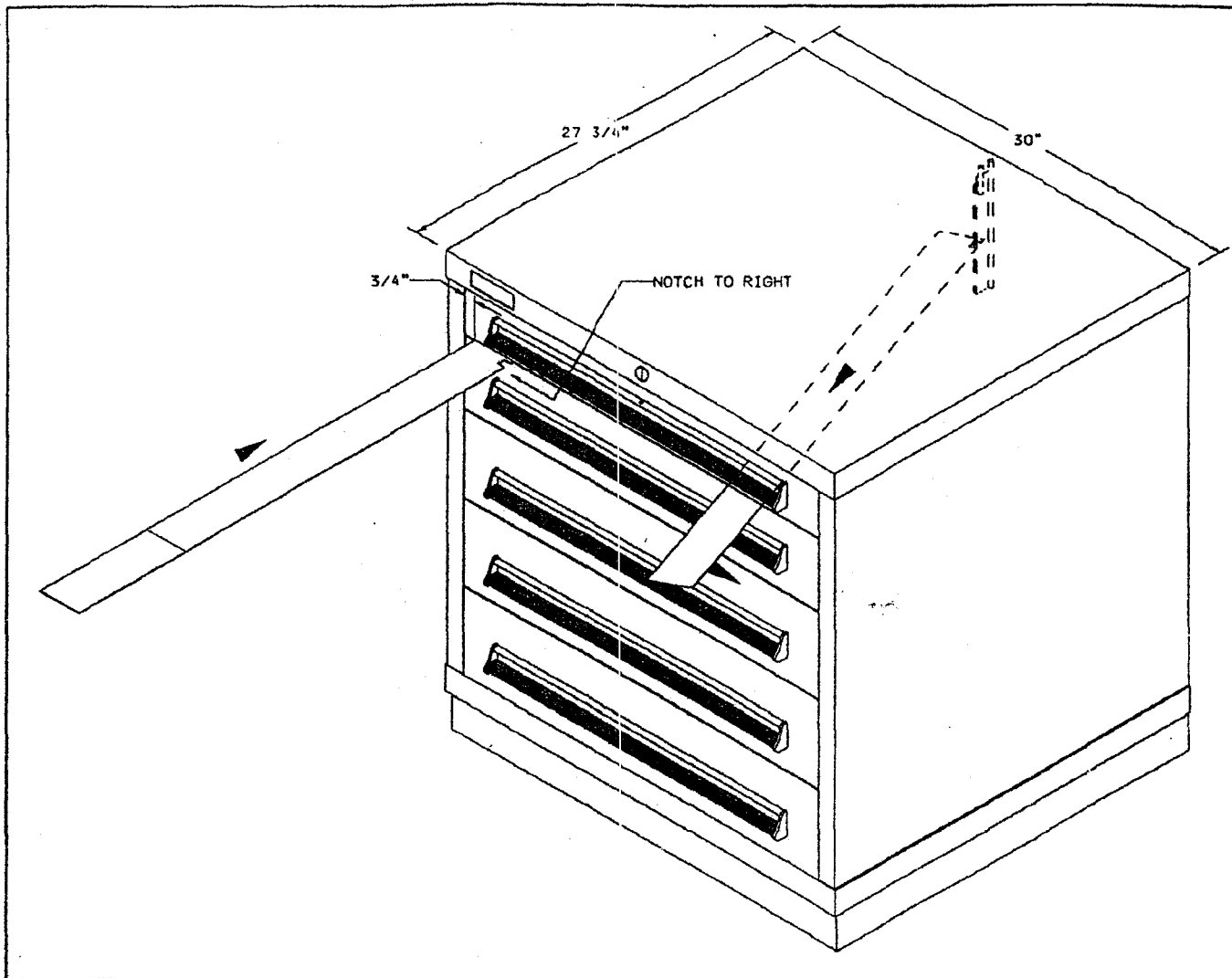
Fax #

# MODULAR DRAWER CABINET LOCKING MECHANISM ASSEMBLY

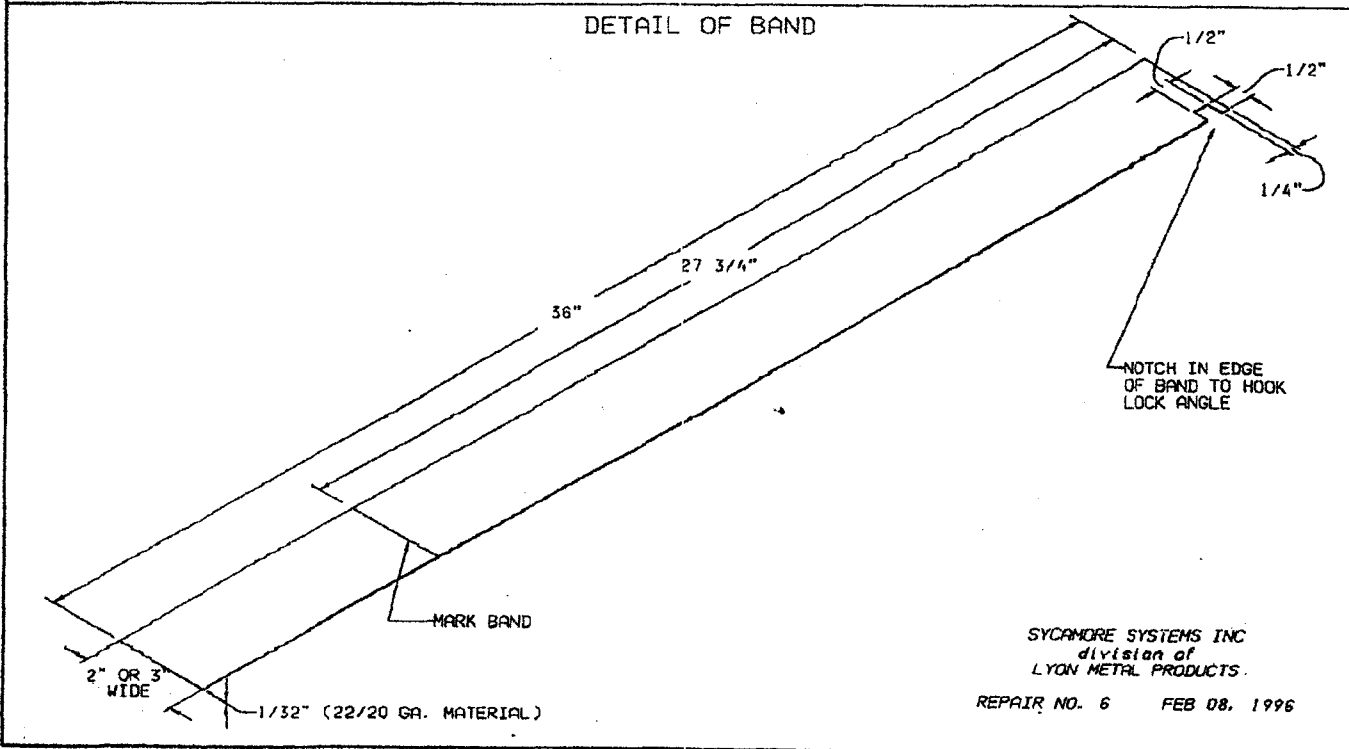
MSS II

LYON METAL PRODUCTS INC.  
DATE 01-16-79 DRAWN BY RICH CHECKED BY

LES-04A



DETAIL OF BAND



SYCAMORE SYSTEMS INC  
 division of  
 LYON METAL PRODUCTS.

REPAIR NO. 6 FEB 08, 1996