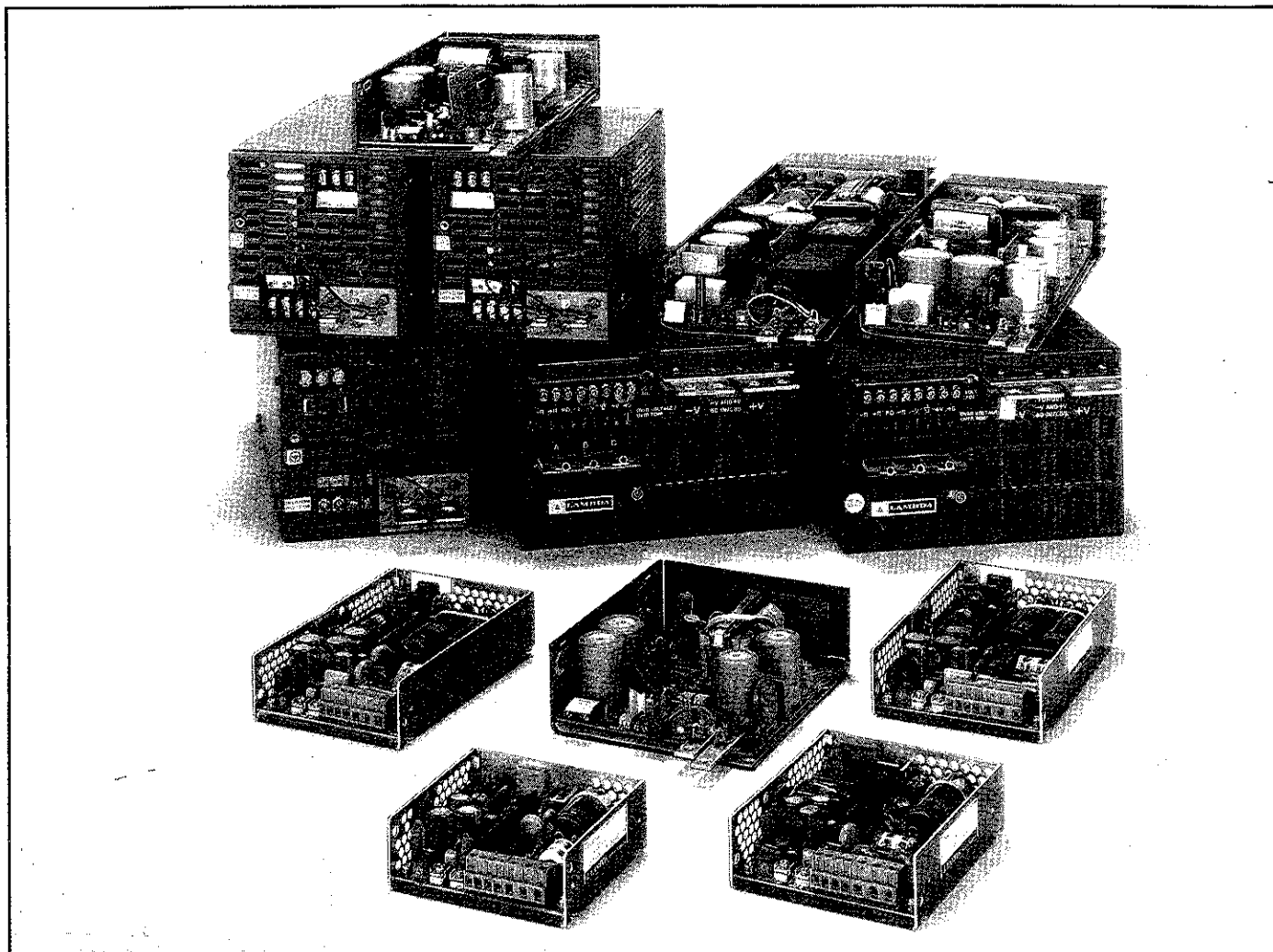


PART IA — AC-TO-DC SWITCHING POWER SUPPLIES

LAMBDA'S INDUSTRIAL LFS SERIES



INDUSTRIAL GRADE SWITCHING FOR WORLDWIDE APPLICATIONS

Reliability starts with the design, and the LFS Series embodies a unique control concept developed by Lambda providing inherently reliable operation in transient line and load conditions. In addition, the LF Series allows increased power density up to 10 watts/inch³. This design approach, coupled with the controlled manufacturing and quality standards (always expected of Lambda) makes the LFS Series the natural choice in demanding industrial applications. The LF Series is now extended up to 6KW with the addition of the LFS-52 package.

- Power density up to 10W/in³.
- Priced from 45¢/W.
- 120 models in 14 package sizes, from 2V through 48V, up to 1100A.
- 0.995 power factor and IEC 555-2 compliance when used with the PFHC 2600.
- 1500W, 2000W and 6000W packages incorporate parallel current sharing circuit with automatic temperature compensation.
- Capability for remote sense, remote programming and remote turn-on/turn-off.
- Protection from short circuit, overvoltage and fan failure conditions.
- Most models carry UL/CSA/TUV approvals.
- International input of 110/220 user selectable. (85–265VAC on 19W, 30W and 60W packages. 170–265VAC, single or three phase on 1500W and 2000W packages).
- Isolation Ratings: 3750VRMS input to output. 1500VRMS input to ground. 500VRMS output to ground.
- Operation from –10°C to +60°C.
- Class H insulated magnetics; high grade electrolytic capacitors; CC4 printed circuit boards.
- Grade 2 design.

PART IA—AC-TO-DC SWITCHING POWER SUPPLIES

LAMBDA'S INDUSTRIAL LFS SERIES

DC OUTPUT

Voltage range shown in tables.

REGULATED VOLTAGE

regulation, line	0.1% from 95 to 132VAC or 187 to 265VAC on LFS-43, 44, 45, 45A, 46, 47, 48, 85 to 265VAC on LFS-38, 39, 40, 85 to 132VAC or 170 to 265VAC on LFS-41, 42, 170 to 265VAC single phase or three phase on LFS-49, 50, + 170 to 265VAC three phase on LFS-52.
regulation, load	0.1% from 0 to full load.
ripple and noise	15mV RMS, 75mV pk-pk for 2V, 5V and 6V models and all models of LFS-52. 20mV RMS, 150mV pk-pk for 12V through 28V models. 35mV RMS, 200mV pk-pk for 48V models.
temperature coefficient	0.03%/°C.
remote programming resistance	1000Ω/V nominal.
remote programming voltage	volt per volt.

AC INPUT

line	95 to 132VAC / 187 to 265VAC, 47-440Hz. 85 to 132VAC / 170 to 265VAC, 47-440Hz on LFS-41, 42 (user selectable), 85 to 265 VAC, 47-440Hz on LFS-38, 39, 40 (wide range input, no tap change). 170 to 265VAC, 47-440Hz single phase or three phase on LFS-49 and LFS-50; 170 to 265VAC three phase on LFS-52.
power	LFS-38: 31.5 watts maximum. LFS-39: 45 watts maximum. LFS-40: 89.5 watts maximum. LFS-41: 120 watts maximum. LFS-42: 186 watts maximum. LFS-43: 326 watts maximum. LFS-44: 440 watts maximum. LFS-45, 45A: 682 watts maximum. LFS-46: 882 watts maximum. LFS-47: 1103 watts maximum. LFS-48: 1470 watts maximum. LFS-49: 2457 watts maximum. LFS-50: 3220 watts maximum. LFS-52: 8000 watts maximum.
RMS current	LFS-38: 0.4A RMS maximum. LFS-39: 0.75A RMS maximum. LFS-40: 1.5A RMS maximum. LFS-41: 2.0A RMS maximum. LFS-42: 3.7A RMS maximum. LFS-43: 5.7A RMS maximum. LFS-44: 7.5A RMS maximum. LFS-45, 45A: 12.0A RMS maximum. LFS-46: 15.0A RMS maximum. LFS-47: 18.0A RMS maximum. LFS-48: 25.0A RMS maximum. LFS-49: 22.0A RMS maximum (single phase); 16.0A RMS maximum (three phase). LFS-50: 30.0A RMS maximum (single phase); 20.0A RMS maximum (three phase). LFS-52: 30.0A RMS maximum per phase.

EFFICIENCY

40% minimum on 2V model of LFS-38. 45% minimum on 2V models of LFS-39, 40, 41. 55% minimum on all other 2V models. 60% minimum on 5V and 6V models of LFS-38; 67% minimum on 5V and 6V models of LFS-39, 40. 68% minimum on 12V through 20V models of LFS-38. 70% minimum on 12V through 20V models of LFS-39 and LFS-52-2. 71% minimum on 24V through 48V models of LFS-39. 72% minimum on 5V through 15V models of LFS-42. 73% minimum on 12V through 20V models of LFS-40. 74% minimum on 24V through 48V models of LFS-38, 40. 75% minimum on 5V through 15V models of LFS-41, 42, 43, 44, 45, 45A, 46, 47, 48, 49, 50 and LFS-52-5. 78% minimum on 20V through 48V models of LFS-41. 80% minimum on all 20V through 48V models of LFS-42, 43, 44, 45, 45A, 46, 47, 48, 49, 50 and LFS-52-8.

DC INPUT

110 to 370VDC on LFS-38, 39, 40. 230 to 370VDC on LFS-41. 260 to 370VDC on LFS-42, 43, 44, 45, 45A, 46, 47, 48 (unit must be wired for 220V configuration). 240 to 370VDC on LFS-49, 50, 52.

OVERSHOOT

No overshoot at turn-on, turn-off or power failure.

OPERATING TEMPERATURE RANGE

Continuous duty 0°C to 60°C (-10°C to 60°C for the LFS-52) with suitable derating above 40°C. Guaranteed turn-on at -10°C (-20°C for the LFS-52) with reduced specifications.

OVERLOAD PROTECTION

ELECTRICAL

External overload protection. Automatic electronic current limiting circuit limits the output current to a preset value, thereby providing protection for the load as well as the power supply.

HOLD UP TIME

2V, 5V and 6V models will remain within regulation limits for at least 16.7 msec. after loss of AC power when operating at full load, V_o max and 105VAC input at 60Hz. 100 msec hold up when operating at maximum output power and 210VAC input at 50Hz on LFS-38, 39, 40 and 41. (When configured at 220V input: 20 msec holdup when operating at maximum output power and 210VAC input at 50Hz.)

IN-RUSH CURRENT LIMITING

All models are provided with in-rush current limiting to limit the current to a preset value.

OVERVOLTAGE PROTECTION

Non-crowbar, inverter shutdown type OV protection is standard on all models.

COOLING

LFS-38, 39, 40, 41, 42, 43, 44, 45 are convection cooled. LFS-45A, 46, 47, 48, 49, 50, 52 are fan cooled.

DC OUTPUT CONTROLS

Screwdriver adjustment over the entire voltage range.

INPUT AND OUTPUT CONNECTIONS

All input, sensing and remote on/off connections are made via PC board mounted terminal block. DC output connections are made via heavy duty bus bars (LFS-38, 39, 40, 41 are PC board mounted terminals). Ground connections are made via chassis stud.

MOUNTING

One mounting surface and one mounting position on LFS-38, 39, 40, 41, 42, 43, 44, 45. One mounting surface, multiple mounting positions on LFS-45A, 46, 47, 48, 49, 50, 52.

REMOTE TURN-ON / TURN-OFF

TTL compatible voltage level signal enables remote turn-on/turn-off of the power supply. A voltage of 2.8V to 5.0V applied to remote on/off terminals will initiate turn-off. Open circuit or short circuit condition, or a zero to .5V signal will cause turn-on. On the LFS-52, positive or negative logic on/off capability is provided.

OUTPUT CURRENT MONITOR

A 0 to 2.5VDC signal which is proportional to the output current is provided on the signal connector of the LFS-52.

POWER GOOD INDICATOR

An open collector DC power fail signal is provided on the LFS-52. An LED will also light in the event of an overvoltage, overtemperature, output power or switching module failure.

REMOTE SENSING

Provision is made for remote sensing to eliminate the effects of power output lead resistance on DC regulation.

ISOLATION RATING

3000VAC input to output and input to ground on LFS-52. 3750VAC input to output and 1500VAC input to ground on other models. 500VAC output to ground on all models.

CURRENT SHARING

The LFS-49, LFS-50, and LFS-52 have internal circuitry that allows units operated in parallel to share load current. Effects of different supply ambient temperatures are compensated for. For example, the hottest unit will automatically supply less load current. A single additional connection must be run between the supplies. This connection is available on the terminal block.

PHYSICAL DATA

Package Model	Lbs. Net	Lbs. Ship	Size Inches
LFS-38	0.58	1.58	1.38 × 3.82 × 3.54
LFS-39	0.74	1.74	1.38 × 3.82 × 4.53
LFS-40	1.03	2.03	1.46 × 3.82 × 6.02
LFS-41	1.25	2.25	1.78 × 3.82 × 6.30
LFS-42	1.30	2.30	1.9 × 4.75 × 5.687
LFS-43	3.00	4.00	1.9 × 4.75 × 9.125
LFS-44	3.50	4.50	1.9 × 4.75 × 11.75
LFS-45	6.00	7.00	1.9 × 4.75 × 16
LFS-45A	6.00	7.00	4 × 4 × 9
LFS-46	8.75	11.75	5 × 4.875 × 7.25
LFS-47	9.19	12.19	5 × 4.875 × 8.875
LFS-48	12.31	15.31	5 × 4.875 × 11
LFS-49	16.00	19.00	7.375 × 4.875 × 11.50
LFS-50	18.00	21.00	7.375 × 4.875 × 12.875
LFS-52	31.00	35.00	5 × 8 × 16

FINISH

Gray, Fed. Std. 595, No. 26081.

ACCESSORIES

For rack adapters, K cover option and other accessories, see Part IV of this catalog.

POWER FACTOR AND HARMONIC CORRECTION

0.995 power factor and IEC 555-2 compliance when used in conjunction with the PFHC-2600. See pp. 30-31.

GUARANTEED FOR 3 YEARS

Three year guarantee includes labor as well as parts. Guarantee applies to operation at full published specifications at the end of three years.

SAFETY AGENCY APPROVALS

All models are UL recognized, TUV licensed, and CSA certified (except "K" cover option). The LFS-49, 50, 52 are under evaluation.

PART IA—AC-TO-DC SWITCHING POWER SUPPLIES

INDUSTRIAL SWITCHING SELECTOR GUIDE

Single Output.

MAX CURRENT AT OPERATING TEMPERATURE OF			COMPLETE ELEC. SPEC. PG.	COMPLETE MECH. SPEC. PG.	DIMENSIONS (inches)	LAMBDA'S CHOICE (Δ)*	PRICE						MODEL
40°C	50°C	60°C					QTY. 1	QTY. 10	QTY. 25	QTY. 100	QTY. 250	QTY. 1000	
1.8V TO 3.3V													
1100.0	1000.0	930.0	33	154	5.0 × 8.0 × 16.0	Δ	\$2800	\$2675	\$ -	\$ -	\$ -	\$ -	LFS-52-2
2V ± 5% ADJ.													
3.8	2.6	1.9	33	154	1.38 × 3.82 × 3.54	Δ	88	84	79	69	60	53	LFS-38-2
6.0	4.2	3.0	33	154	1.38 × 3.82 × 4.53	Δ	118	113	108	87	76	68	LFS-39-2
12.0	8.4	6.0	33	154	1.46 × 3.82 × 6.02	Δ	168	161	154	125	108	96	LFS-40-2
18.0	12.6	9.0	33	154	1.78 × 3.82 × 6.30	Δ	224	213	204	161	141	125	LFS-41-2
21.3	17.4	13.0	33	156	1.97 × 4.81 × 5.687	Δ	293	279	268	191	175	152	LFS-42-2K
25.0	21.8	17.3	33	156	1.9 × 4.75 × 5.637	Δ	283	271	259	185	168	146	LFS-42-2
34.0	28.5	21.3	33	156	2.32 × 4.81 × 9.125	Δ	347	331	318	256	232	203	LFS-43-2K
40.0	33.5	25.0	33	156	1.9 × 4.75 × 9.125	Δ	338	322	308	248	225	198	LFS-43-2
48.0	38.3	20.1	33	157	1.97 × 4.81 × 11.75	Δ	444	423	406	331	301	270	LFS-44-2K
60.0	45.0	33.5	33	157	1.9 × 4.75 × 11.75	Δ	434	414	397	323	294	263	LFS-44-2
90.0	67.5	45.0	33	157	1.9 × 4.75 × 16	Δ	578	551	528	427	404	358	LFS-45-2
90.0	67.5	45.0	33	156	4.0 × 4.0 × 9.0	Δ	578	551	528	427	404	358	LFS-45A-2
120.0	112.0	93.5	33	155	5 × 4.875 × 7.25	Δ	698	666	639	490	465	421	LFS-46-2
150.0	142.5	120.0	33	155	5 × 4.875 × 8.875	Δ	820	781	750	611	520	470	LFS-47-2
200.0	185.0	157.0	33	155	5 × 4.875 × 11	Δ	963	918	880	741	652	585	LFS-48-2
335.0	318.0	291.0	33	155	4.875 × 7.375 × 11.50	Δ	1313	1251	1201	981	848	795	LFS-49-2
400.0	375.0	350.0	33	155	4.875 × 7.375 × 12.875	Δ	1566	1492	1431	1198	1022	962	LFS-50-2
4.5V TO 6.0V													
1000.0	930.0	850.0	33	154	5.0 × 8.0 × 16.0	Δ	2800	2675	-	-	-	-	LFS-52-5
5V ± 5% ADJ.													
3.8	2.6	1.9	33	154	1.38 × 3.82 × 3.54	Δ	88	84	79	69	60	53	LFS-38-5
6.0	4.2	3.0	33	154	1.38 × 3.82 × 4.53	Δ	118	113	108	87	76	68	LFS-39-5
12.0	8.4	6.0	33	154	1.46 × 3.82 × 6.02	Δ	168	161	154	125	108	96	LFS-40-5
18.0	12.6	9.0	33	154	1.78 × 3.82 × 6.30	Δ	224	213	204	161	141	125	LFS-41-5
21.3	17.4	13.0	33	156	1.97 × 4.81 × 5.687	Δ	293	279	268	191	175	152	LFS-42-5K
25.0	21.8	17.3	33	156	1.9 × 4.75 × 5.637	Δ	283	271	259	185	168	146	LFS-42-5
34.0	28.5	21.3	33	156	2.32 × 4.81 × 9.125	Δ	347	331	318	256	232	203	LFS-43-5K
40.0	33.5	25.0	33	156	1.9 × 4.75 × 9.125	Δ	338	322	308	248	225	198	LFS-43-5
48.0	38.3	20.1	33	157	1.97 × 4.81 × 11.75	Δ	444	423	406	331	301	270	LFS-44-5K
60.0	45.0	33.5	33	157	1.9 × 4.75 × 11.75	Δ	434	414	397	323	294	263	LFS-44-5
90.0	67.5	45.0	41	157	1.9 × 4.75 × 16	Δ	578	551	528	427	404	358	LFS-45-5
90.0	67.5	45.0	33	156	4.0 × 4.0 × 9.0	Δ	578	551	528	427	404	358	LFS-45A-5
120.0	112.0	93.5	33	155	5 × 4.875 × 7.25	Δ	698	666	639	490	465	421	LFS-46-5
150.0	142.5	120.0	33	155	5 × 4.875 × 8.875	Δ	820	781	750	611	520	470	LFS-47-5
200.0	185.0	157.0	33	155	5 × 4.875 × 11	Δ	963	918	880	741	652	585	LFS-48-5
300.0	285.0	261.0	33	155	4.875 × 7.375 × 11.50	Δ	1313	1251	1201	981	848	795	LFS-49-5
400.0	375.0	350.0	33	155	4.875 × 7.375 × 12.875	Δ	1566	1492	1431	1198	1022	962	LFS-50-5

PART IA—AC-TO-DC SWITCHING POWER SUPPLIES

INDUSTRIAL SWITCHING SELECTOR GUIDE

Single Output.

MAX CURRENT AT OPERATING TEMPERATURE OF			COMPLETE ELEC. SPEC. PG.	COMPLETE MECH. SPEC. PG.	DIMENSIONS (inches)	LAMBDA'S CHOICE (Δ)*	QTY. 1	QTY. 10	PRICE			QTY. 1000	MODEL
40°C	50°C	60°C							QTY. 25	QTY. 100	QTY. 250		
5.5V TO 8.0V													
800.0	750.0	650.0	33	154	5.0 × 8.0 × 16.0	—	2800	2675	—	—	—	—	LFS-52-8
6V ± 5% ADJ.													
3.2	2.2	1.6	33	154	1.38 × 3.82 × 3.54	Δ	88	84	79	69	60	53	LFS-38-6
5.0	3.5	2.5	33	154	1.38 × 3.82 × 4.53	Δ	118	113	108	87	76	68	LFS-39-6
10.0	7.0	5.0	33	154	1.46 × 3.82 × 6.02	Δ	168	161	154	125	108	96	LFS-40-6
15.0	10.5	7.5	33	154	1.78 × 3.82 × 6.30	Δ	224	213	204	161	141	125	LFS-41-6
17.9	14.6	10.9	33	156	1.97 × 4.81 × 5.687	Δ	293	279	268	191	175	152	LFS-42-6K
21.0	18.3	14.5	33	156	1.9 × 4.75 × 5.637	Δ	283	271	259	185	168	146	LFS-42-6
29.8	23.8	17.4	33	156	2.32 × 4.81 × 9.125	Δ	347	331	318	256	232	203	LFS-43-6K
35.0	28.0	20.5	33	156	1.9 × 4.75 × 9.125	Δ	338	322	308	248	225	198	LFS-43-6
40.0	31.9	16.8	33	157	1.97 × 4.81 × 11.75	Δ	444	423	406	331	301	270	LFS-44-6K
50.0	37.5	28.0	33	157	1.9 × 4.75 × 11.75	Δ	434	414	397	323	294	263	LFS-44-6
75.0	56.0	37.5	33	157	1.9 × 4.75 × 16	Δ	578	551	528	427	404	358	LFS-45-6
75.0	56.0	37.5	33	156	4.0 × 4.0 × 9.0	Δ	578	551	528	427	404	358	LFS-45A-6
101.0	94.5	79.0	33	155	5 × 4.875 × 7.25	Δ	698	666	639	490	465	421	LFS-46-6
126.0	120.0	107.0	33	155	5 × 4.875 × 8.875	Δ	820	781	750	611	520	470	LFS-47-6
168.0	155.0	132.0	33	155	5 × 4.875 × 11	Δ	963	918	880	741	652	585	LFS-48-6
260.0	244.0	224.0	33	155	4.875 × 7.375 × 11.50	Δ	1313	1251	1201	981	848	795	LFS-49-6
345.0	325.0	300.0	33	155	4.875 × 7.375 × 12.875	Δ	1566	1492	1431	1198	1022	962	LFS-50-6
12V ± 5% ADJ.													
1.6	1.1	0.8	33	154	1.38 × 3.82 × 3.54	Δ	88	84	79	69	60	53	LFS-38-12
2.5	1.75	1.25	33	154	1.38 × 3.82 × 4.53	Δ	118	113	108	87	76	68	LFS-39-12
5.0	3.5	2.5	33	154	1.46 × 3.82 × 6.02	Δ	168	161	154	125	108	96	LFS-40-12
7.5	5.2	3.7	33	154	1.78 × 3.82 × 6.30	Δ	224	213	204	161	141	125	LFS-41-12
8.9	7.6	6.0	33	156	1.97 × 4.81 × 5.687	Δ	293	279	268	191	175	152	LFS-42-12K

*12V models continued on next page.

PART IA—AC-TO-DC SWITCHING POWER SUPPLIES

INDUSTRIAL SWITCHING SELECTOR GUIDE

Single Output.

MAX CURRENT AT OPERATING TEMPERATURE OF			COMPLETE ELEC. SPEC. PG.	COMPLETE MECH. SPEC. PG.	DIMENSIONS (inches)	LAMBDA'S CHOICE (Δ)*	PRICE						MODEL
40°C	50°C	60°C					QTY. 1	QTY. 10	QTY. 25	QTY. 100	QTY. 250	QTY. 1000	
12V ± 5% ADJ. (continued)													
10.5	9.5	8.0	33	156	1.9 × 4.75 × 5.687	Δ	\$ 283	\$ 271	\$ 259	\$ 185	\$ 168	\$ 146	LFS-42-12
16.2	12.8	9.4	33	156	2.32 × 4.81 × 9.125	Δ	347	331	318	256	232	203	LFS-43-12K
19.0	15.0	11.0	33	156	1.9 × 4.75 × 9.125	Δ	338	322	308	248	225	198	LFS-43-12
20.8	15.7	8.1	33	157	1.97 × 4.81 × 11.75	Δ	444	423	406	331	301	270	LFS-44-12K
26.0	18.5	13.5	33	157	1.9 × 4.75 × 11.75	Δ	434	414	397	323	294	263	LFS-44-12
40.0	30.0	20.0	33	157	1.9 × 4.75 × 16	Δ	578	551	528	427	404	358	LFS-45-12
40.0	30.0	20.0	33	156	4.0 × 4.0 × 9.0	Δ	578	551	528	427	404	358	LFS-45A-12
51.5	48.0	40.0	33	155	5 × 4.875 × 7.25	Δ	698	666	639	490	465	421	LFS-46-12
64.5	61.5	55.0	33	155	5 × 4.875 × 8.875	Δ	820	781	750	611	520	470	LFS-47-12
86.0	79.5	67.5	33	155	5 × 4.875 × 11	Δ	963	918	880	741	652	585	LFS-48-12
145.0	138.0	126.0	33	155	4.875 × 7.375 × 11.50	Δ	1313	1251	1201	981	848	795	LFS-49-12
190.0	180.0	170.0	33	155	4.875 × 7.375 × 12.875	Δ	1566	1492	1431	1198	1022	962	LFS-50-12
15V ± 5% ADJ.													
1.3	0.9	0.65	33	154	1.38 × 3.82 × 3.54	Δ	88	84	79	69	60	53	LFS-38-15
2.0	1.4	1.0	33	154	1.38 × 3.82 × 4.53	Δ	118	113	108	87	76	68	LFS-39-15
4.0	2.8	2.0	33	154	1.46 × 3.82 × 6.02	Δ	168	161	154	125	108	96	LFS-40-15
6.0	4.2	3.0	33	154	1.78 × 3.82 × 6.30	Δ	224	213	204	161	141	125	LFS-41-15
7.2	6.0	4.7	33	156	1.97 × 4.81 × 5.687	Δ	293	279	268	191	175	152	LFS-42-15K
8.5	7.5	6.3	33	156	1.9 × 4.75 × 5.687	Δ	283	271	259	185	168	146	LFS-42-15
13.2	10.2	7.7	33	156	2.32 × 4.81 × 9.125	Δ	347	331	318	256	232	203	LFS-43-15K
15.5	12.0	9.0	33	156	1.9 × 4.75 × 9.125	Δ	338	322	308	248	225	198	LFS-43-15
16.8	13.2	6.9	33	157	1.97 × 4.81 × 11.75	Δ	444	423	406	331	301	270	LFS-44-15K
21.0	15.5	11.5	33	157	1.9 × 4.75 × 11.75	Δ	434	414	397	323	294	263	LFS-44-15
32.5	24.5	16.0	33	157	1.9 × 4.75 × 16	Δ	578	551	528	427	404	358	LFS-45-15
32.5	24.5	16.0	33	166	4.0 × 4.0 × 9.0	Δ	578	551	528	427	404	358	LFS-45A-15
42.0	39.0	33.0	33	155	5 × 4.875 × 7.25	Δ	698	666	639	490	465	421	LFS-46-15
52.5	50.0	44.5	33	155	5 × 4.875 × 8.875	Δ	820	781	750	611	520	470	LFS-47-15
70.0	64.5	55.0	33	155	5 × 4.875 × 11	Δ	963	918	880	741	652	585	LFS-48-15
115.0	108.0	100.0	33	155	4.875 × 7.375 × 11.50	Δ	1313	1251	1201	981	848	795	LFS-49-15
153.0	143.0	133.0	33	155	4.875 × 7.375 × 12.875	Δ	1566	1492	1431	1198	1022	962	LFS-50-15

PART IA—AC-TO-DC SWITCHING POWER SUPPLIES

INDUSTRIAL SWITCHING SELECTOR GUIDE

Single Output.

MAX CURRENT AT OPERATING TEMPERATURE OF			COMPLETE ELEC. SPEC. PG.	COMPLETE MECH. SPEC. PG.	DIMENSIONS (inches)	LAMBDA'S CHOICE (Δ)*	QTY. 1	QTY. 10	PRICE						MODEL
40°C	50°C	60°C							QTY. 25	QTY. 100	QTY. 250	QTY. 1000			
20V ± 5% ADJ.															
0.95	0.65	0.45	33	154	1.38 × 3.82 × 3.54	Δ	\$ 88	\$ 84	\$ 79	\$ 69	\$ 60	\$ 53	LFS-38-20		
1.5	1.05	0.75	33	154	1.38 × 3.82 × 4.53	Δ	118	113	108	87	76	68	LFS-39-20		
3.0	2.1	1.5	33	154	1.46 × 3.82 × 6.02	Δ	168	161	154	125	108	96	LFS-40-20		
4.5	3.1	2.2	33	154	1.78 × 3.82 × 6.30	Δ	224	213	204	161	141	125	LFS-41-20		
5.7	4.9	3.8	33	156	1.97 × 4.81 × 5.687	Δ	293	279	268	191	175	152	LFS-42-20K		
6.7	6.1	5.1	33	156	1.9 × 4.75 × 5.687	Δ	283	271	259	185	168	146	LFS-42-20		
10.0	7.8	5.8	33	156	2.32 × 4.81 × 9.125	Δ	347	331	318	256	232	203	LFS-43-20K		
11.8	9.2	6.8	33	156	1.9 × 4.75 × 9.125	Δ	338	322	308	248	225	198	LFS-43-20		
12.8	9.8	5.1	33	157	1.97 × 4.81 × 11.75	Δ	444	423	406	331	301	270	LFS-44-20K		
16.0	11.5	8.5	33	157	1.9 × 4.75 × 11.75	Δ	434	414	397	323	294	263	LFS-44-20		
25.0	19.0	12.5	33	157	1.9 × 4.75 × 16	Δ	578	551	528	427	404	358	LFS-45-20		
25.0	19.0	12.5	33	156	4.0 × 4.0 × 9.0	Δ	578	551	528	427	404	358	LFS-45A-20		
32.0	30.0	25.0	33	155	5 × 4.875 × 7.25	Δ	698	666	639	490	465	421	LFS-46-20		
40.0	38.0	34.0	33	155	5 × 4.875 × 8.875	Δ	820	781	750	611	520	470	LFS-47-20		
53.0	49.0	41.5	33	155	5 × 4.875 × 11	Δ	963	918	880	741	652	585	LFS-48-20		
85.0	80.0	72.0	33	155	4.875 × 7.375 × 11.50	Δ	1313	1251	1201	981	848	795	LFS-49-20		
111.0	104.0	97.0	33	155	4.875 × 7.375 × 12.875	Δ	1566	1492	1431	1198	1022	962	LFS-50-20		
24V ± 5% ADJ.															
0.8	0.55	0.4	33	154	1.38 × 3.82 × 3.54	Δ	88	84	79	69	60	53	LFS-38-24		
1.3	0.9	0.65	33	154	1.38 × 3.82 × 4.53	Δ	118	113	108	87	76	68	LFS-39-24		
2.5	1.75	1.25	33	154	1.46 × 3.82 × 6.02	Δ	168	161	154	125	108	96	LFS-40-24		
3.8	2.6	1.9	33	154	1.78 × 3.82 × 6.30	Δ	224	213	204	161	141	125	LFS-41-24		
4.8	4.1	3.2	33	156	1.97 × 4.81 × 5.687	Δ	293	279	268	191	175	152	LFS-42-24K		
5.7	5.1	4.3	33	156	1.9 × 4.75 × 5.687	Δ	283	271	259	185	168	146	LFS-42-24		
8.5	6.6	4.8	33	156	2.32 × 4.81 × 9.125	Δ	347	331	318	256	232	203	LFS-43-24K		
10.0	7.8	5.7	33	156	1.9 × 4.75 × 9.125	Δ	338	322	308	248	225	198	LFS-43-24		
10.4	8.5	4.5	33	157	1.97 × 4.81 × 11.75	Δ	444	423	406	331	301	270	LFS-44-24K		
13.0	10.0	7.5	33	157	1.9 × 4.75 × 11.75	Δ	434	414	397	323	294	263	LFS-44-24		
20.0	15.0	10.0	33	157	1.9 × 4.75 × 16	Δ	578	551	528	427	404	358	LFS-45-24		
20.0	15.0	10.0	33	156	4.0 × 4.0 × 9.0	Δ	578	551	528	427	404	358	LFS-45A-24		
27.0	25.0	21.0	33	155	5 × 4.875 × 7.25	Δ	698	666	639	490	465	421	LFS-46-24		
33.5	32.0	28.5	33	155	5 × 4.875 × 8.875	Δ	820	781	750	611	520	470	LFS-47-24		
44.5	40.5	35.0	33	155	5 × 4.875 × 11	Δ	963	918	880	741	652	585	LFS-48-24		
72.0	68.0	63.0	33	155	4.875 × 7.375 × 11.50	Δ	1313	1251	1201	981	848	795	LFS-49-24		
97.0	90.0	84.0	33	155	4.875 × 7.375 × 12.875	Δ	1566	1492	1431	1198	1022	962	LFS-50-24		
28V ± 5% ADJ.															
0.7	0.5	0.35	33	154	1.38 × 3.82 × 3.54	Δ	88	84	79	69	60	53	LFS-38-28		

*28V models continued on next page.

PART IA—AC-TO-DC SWITCHING POWER SUPPLIES

INDUSTRIAL SWITCHING SELECTOR GUIDE

Single Output.

MAX CURRENT AT OPERATING TEMPERATURE OF			COMPLETE ELEC. SPEC. PG.	COMPLETE MECH. SPEC. PG.	DIMENSIONS (inches)	LAMBDA'S CHOICE (Δ)*	QTY. 1	QTY. 10	PRICE		QTY. 250	QTY. 1000	MODEL
40°C	50°C	60°C							QTY. 25	QTY. 100			
28V ± 5% ADJ. (continued)													
1.1	0.77	0.55	33	154	1.38 × 3.82 × 4.53	Δ	118	113	108	87	76	68	LFS-39-28
2.2	1.5	1.1	49	154	1.46 × 3.82 × 6.02	Δ	168	161	154	125	108	96	LFS-40-28
3.3	2.3	1.6	33	154	1.78 × 3.82 × 6.30	Δ	224	213	204	161	141	125	LFS-41-28
4.3	3.5	2.8	33	156	1.97 × 4.81 × 5.687	Δ	293	279	268	191	175	152	LFS-42-28K
5.0	4.4	3.7	33	156	1.9 × 4.75 × 5.687	Δ	283	271	259	185	168	146	LFS-42-28
7.3	5.8	4.3	33	156	2.32 × 4.81 × 9.125	Δ	347	331	318	256	232	203	LFS-43-28K
8.6	6.8	5.0	33	156	1.9 × 4.75 × 9.125	Δ	338	322	308	248	225	198	LFS-43-28
9.2	7.2	3.8	33	157	1.97 × 4.81 × 11.75	Δ	444	423	406	331	301	270	LFS-44-28K
11.5	8.5	6.3	33	157	1.9 × 4.75 × 11.75	Δ	434	414	397	323	294	263	LFS-44-28
17.5	13.0	8.5	33	157	1.9 × 4.75 × 16	Δ	578	551	528	427	404	358	LFS-45-28
17.5	13.0	8.5	33	156	4.0 × 4.0 × 9.0	Δ	578	551	528	427	404	358	LFS-45A-28
23.0	21.5	18.0	33	155	5 × 4.875 × 7.25	Δ	698	666	639	490	465	421	LFS-46-28
29.0	27.5	24.5	33	155	5 × 4.875 × 8.875	Δ	820	781	750	611	520	470	LFS-47-28
38.5	35.0	30.0	33	155	5 × 4.875 × 11	Δ	963	918	880	741	652	585	LFS-48-28
64.0	61.0	56.0	33	155	4.875 × 7.375 × 11.50	Δ	1313	1251	1201	981	848	795	LFS-49-28
86.0	80.0	75.0	33	155	4.875 × 7.375 × 12.875	Δ	1566	1492	1431	1198	1022	962	LFS-50-28
48V ± 5% ADJ.													
0.4	0.28	0.2	33	154	1.38 × 3.82 × 3.54	Δ	88	84	79	69	60	53	LFS-38-48
0.65	0.45	0.32	33	154	1.38 × 3.82 × 4.53	Δ	118	113	108	87	76	68	LFS-39-48
1.25	0.87	0.62	33	154	1.46 × 3.82 × 6.02	Δ	168	161	154	125	108	96	LFS-40-48
1.9	1.3	0.9	33	154	1.76 × 3.82 × 6.30	Δ	224	213	204	161	141	125	LFS-41-48
2.4	2.1	1.6	33	156	1.97 × 4.81 × 5.687	Δ	293	279	268	191	175	152	LFS-42-48K
2.8	2.6	2.1	33	156	1.9 × 4.75 × 5.687	Δ	283	271	259	185	168	146	LFS-42-48
4.3	3.4	2.6	33	156	2.32 × 4.81 × 9.125	Δ	347	331	318	256	232	203	LFS-43-48K
5.0	4.0	3.0	33	156	1.9 × 4.75 × 9.125	Δ	338	322	308	248	225	198	LFS-43-48
5.2	4.3	2.3	33	157	1.97 × 4.81 × 11.75	Δ	444	423	406	331	301	270	LFS-44-48K
6.5	5.0	3.8	33	157	1.9 × 4.75 × 11.75	Δ	434	414	397	323	294	263	LFS-44-48
10.0	7.5	5.0	33	157	1.9 × 4.75 × 16	Δ	578	551	528	427	404	358	LFS-45-48
10.0	7.5	5.0	33	156	4.0 × 4.0 × 9.0	Δ	578	551	528	427	404	358	LFS-45A-48
13.5	12.5	10.5	33	155	5 × 4.875 × 7.25	Δ	698	666	639	490	465	421	LFS-46-48
17.0	16.0	14.5	33	155	5 × 4.875 × 8.875	Δ	820	781	750	611	520	470	LFS-47-48
22.5	20.5	17.5	33	155	5 × 4.875 × 11	Δ	963	918	880	741	652	585	LFS-48-48
37.0	34.0	31.0	33	155	4.875 × 7.375 × 11.50	Δ	1313	1251	1201	981	848	795	LFS-49-48
48.0	45.0	42.0	33	155	4.875 × 7.375 × 12.875	Δ	1566	1492	1431	1198	1022	962	LFS-50-48

PART V — MECHANICAL DRAWINGS

LFS-38, LFS-39, LFS-40, LFS-41 AND LFS-52

LFS-38
LFS-39
LFS-40
LFS-41

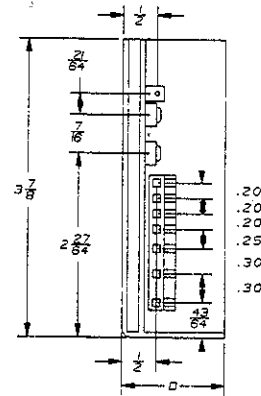
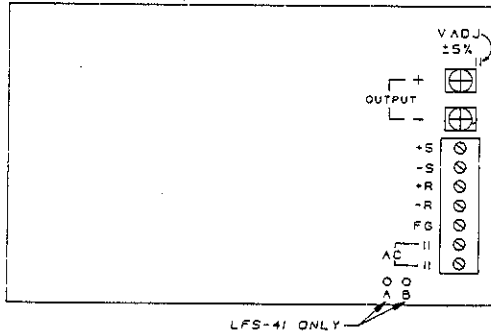
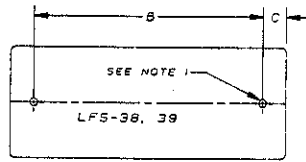
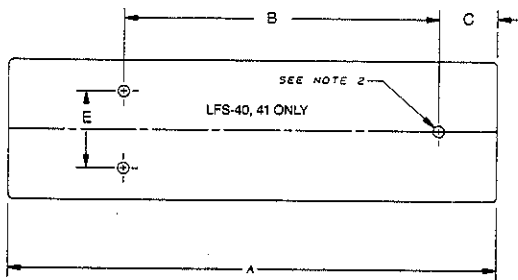


TABLE OF WEIGHTS		
MODEL	NET (LBS.)	SHIPPING LBS.
LFS-38	0.58	1.58
LFS-39	0.74	1.74
LFS-40	1.03	2.03
LFS-41	1.25	2.25



- NOTES:
- NO. 6-32 UNC-2B AND TAPPED HOLES (2) FOR CUSTOMER CHASSIS MOUNTING. (SCREWS MUST NOT PROTRUDE INTO POWER SUPPLY BY MORE THAN 6MM.)
 - NO. 8-32 UNC-20 TAPPED HOLES (3) FOR CUSTOMER CHASSIS MOUNTING (SCREWS MUST NOT PROTRUDE INTO POWER SUPPLY BY MORE THAN 6MM.)
 - APPLICABLE FOR LFS-41 ONLY:
FOR 85-132 VAC INPUT - SHORT A+B
FOR 170-265 VAC INPUT - OPEN A+B

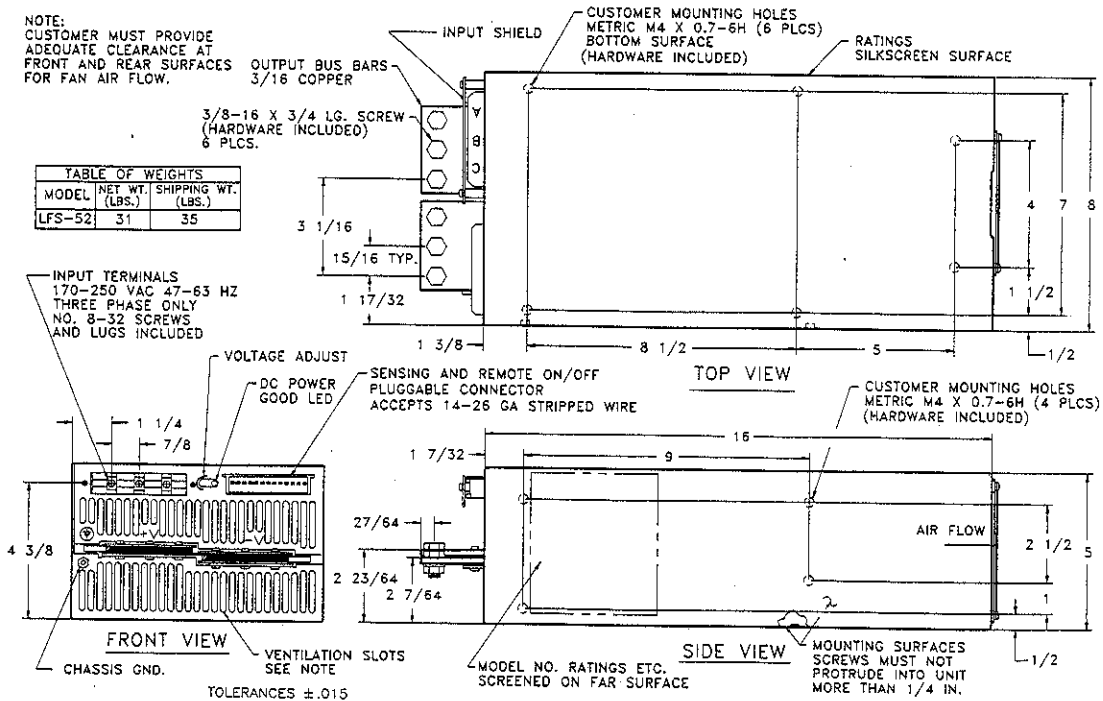


MODEL	A	B	C	D	E
LFS-38	3 ⁹ / ₁₆	2 ²⁹ / ₃₂	5 ¹ / ₁₆	1 ⁷ / ₁₆	—
LFS-39	4 ⁹ / ₁₆	3 ¹⁷ / ₆₄	5 ¹ / ₁₆	1 ⁷ / ₁₆	—
LFS-40	6 ¹ / ₁₆	5	3 ³ / ₆₄	1 ¹ / ₂	2 ²⁵ / ₃₂
LFS-41	6 ¹¹ / ₃₂	3 ¹⁵ / ₁₆	1 ⁹ / ₃₂	1 ¹⁰ / ₁₆	6 ⁶³ / ₆₄

LFS-52

NOTE:
CUSTOMER MUST PROVIDE ADEQUATE CLEARANCE AT FRONT AND REAR SURFACES FOR FAN AIR FLOW.

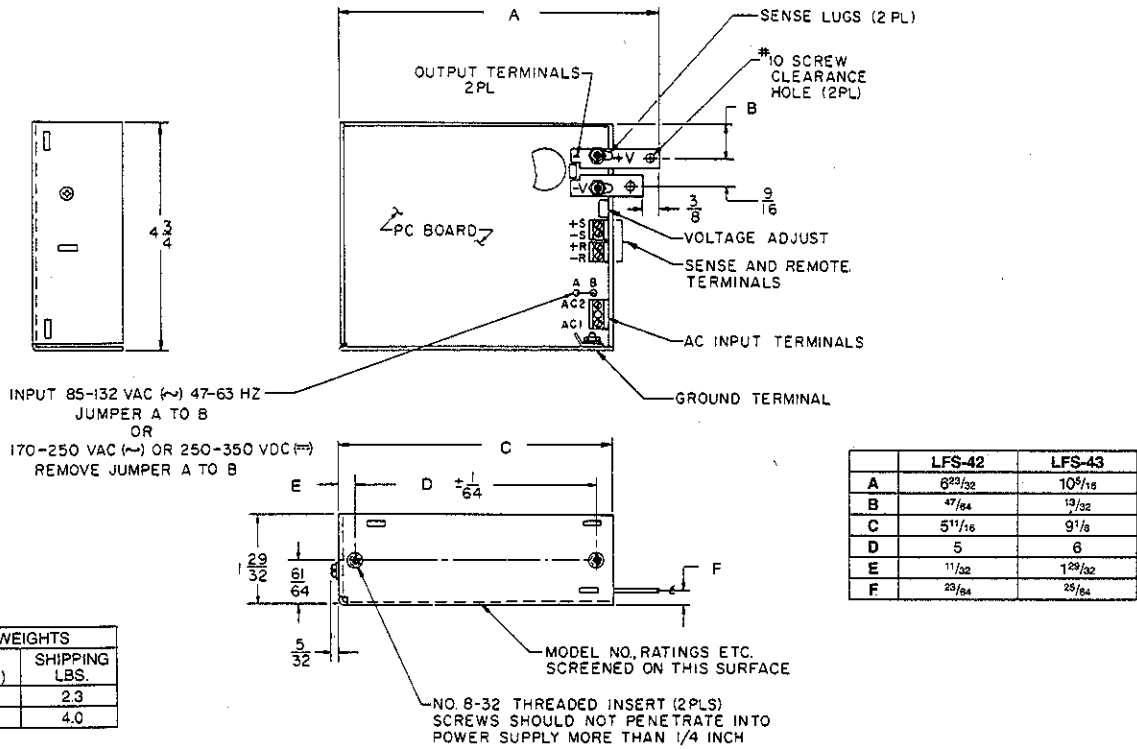
TABLE OF WEIGHTS		
MODEL	NET WT. (LBS.)	SHIPPING WT. (LBS.)
LFS-52	31	35



PART V—MECHANICAL DRAWINGS

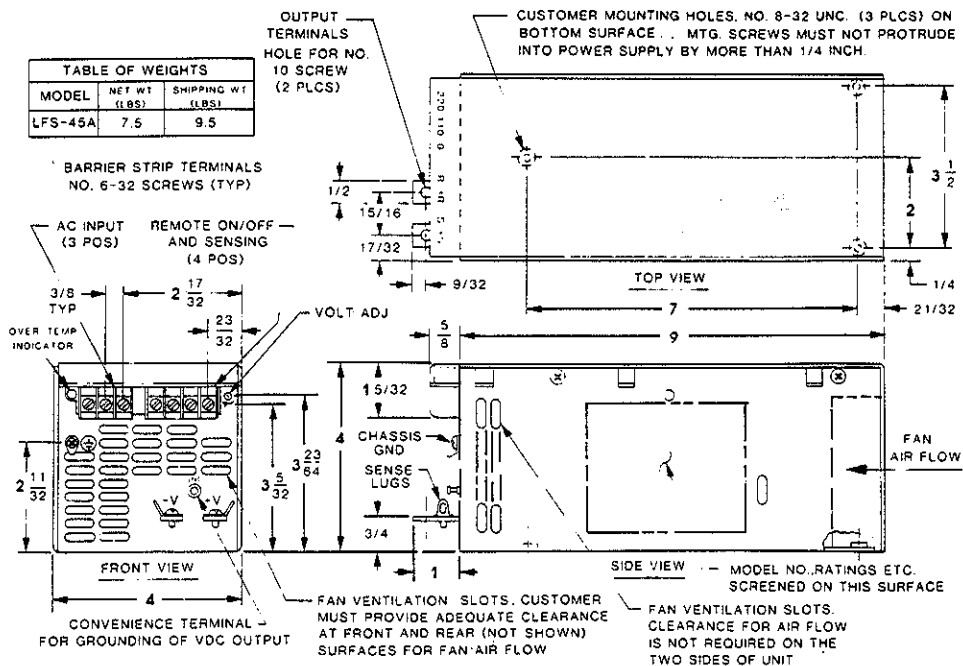
LFS-42, LFS-43, LFS-45A

LFS-42
LFS-43



MODEL	NET (LBS.)	SHIPPING LBS.
LFS-42	1.3	2.3
LFS-43	3.0	4.0

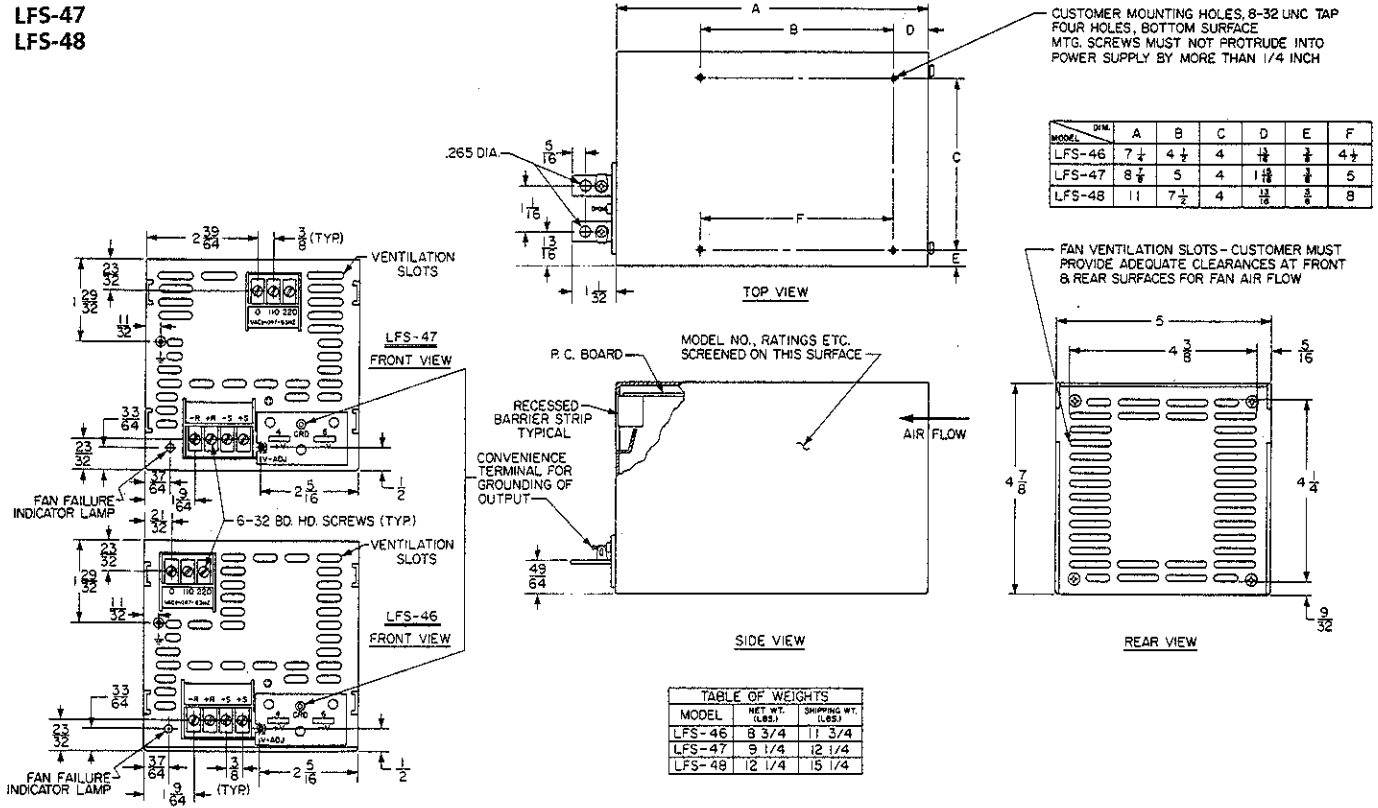
LFS-45A



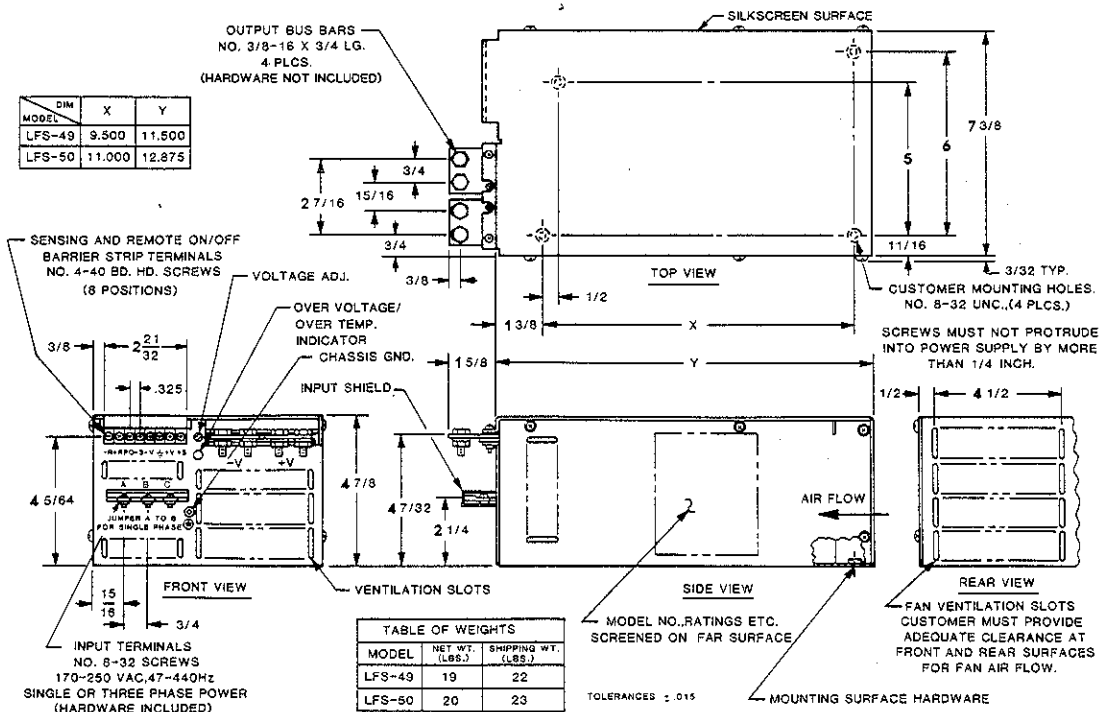
PART V — MECHANICAL DRAWINGS

LFS-46, LFS-47, LFS-48, LFS-49 AND LFS-50

LFS-46
LFS-47
LFS-48



LFS-49
LFS-50



PART V — MECHANICAL DRAWINGS

LFS-44, LFS-45 AND Watt Box LFO-26, LFO-26-1

LFS-44
LFS-45

	LFS-44	LFS-45
A	11 3/4	15 1/2
B	12 1/2	16 1/2
C	12 7/8	16 1/4
D	13/32	15/32
E	9/16	1.000
F	13/32	7/16
G	7.500	10.500
H	4.000	5.000
J	1 3/4	4 1/4
K	1"	1 25/32

